



# HMEC STOCK LIST as of September 2023



# USED MACHINE STOCK LIST

HITACHI

Reliable solutions

No.	Model	Serial Nos.	Hour meter	Model Year	Attachment pipe	Click below links to see machines photos	Comment
1	ZX200-3	210503	7,094	2008	N/A	<a href="#">ZX200-3 - Hitachi used equipment website (hitachicmused.com)</a>	In Stock
2	ZX200-3	213557	8,300	2010	N/A	<a href="#">ZX200-3 - Hitachi used equipment website (hitachicmused.com)</a>	In Stock
3	ZX200-3	218782	8,207	2011	Breaker	<a href="#">ZX200-3 - Hitachi used equipment website (hitachicmused.com)</a>	In Stock
4	ZX200-3	222942	7,021	2013	Breaker	<a href="#">ZX200-3 - Hitachi used equipment website (hitachicmused.com)</a>	In Stock
5	ZX210K-3	201706	11,614	2006	Breaker	<a href="#">ZX210K-3 - Hitachi used equipment website (hitachicmused.com)</a>	In Stock
6	ZX200-3	219208	9,970	2011	Breaker	<a href="#">ZX200-3 - Hitachi used equipment website (hitachicmused.com)</a>	In Stock
7	ZX200-3	210145	6,902	2008	Breaker	<a href="#">ZX200-3 - Hitachi used equipment website (hitachicmused.com)</a>	Coming soon
8	ZW140	8300	2,337	2018	N/A	<a href="#">ZW140 - Hitachi used equipment website (hitachicmused.com)</a>	In Stock
9	ZX200-3	220536	10,832	2012	N/A	<a href="#">Link will be shared when it is ready</a>	Coming soon
10	ZX200-3	222437	7,998	2013	N/A	<a href="#">Link will be shared when it is ready</a>	Coming soon
11	ZX200-3	222398	11,198	2012	Breaker	<a href="#">Link will be shared when it is ready</a>	Coming soon
12	ZX210K-3	100327	8,440	2011	Breaker	<a href="#">Link will be shared when it is ready</a>	Coming soon

## Terms & Condition:

- Price Validity: 30<sup>th</sup> Sep 2023
- Payment: 100% in advance
- Sales: First come first serve basis
- Ownership transfer: After confirming full payment receipt in our bank account



# ZX-5D not complaint with any emission control regulation

HITACHI

Reliable Solutions

# HITACHI

Reliable solutions



## ZAXIS-5B / Stage IIIB-compliant engine

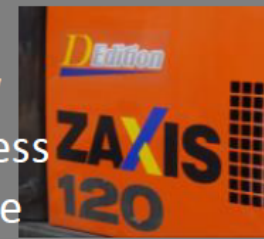
ZAXIS 5B series equips Diesel Particulate Filter (DPF) to capture air pollutants which is automatically burnt by an oxidation catalyst and exhaust temperature control..

The **variable geometry turbocharger and high volume-cooled EGR (Exhaust Gas Recirculation) system** also help to reduce nitrous oxide.

## ZAXIS-5D / not complaint with any emission control regulation

ZAXIS 5D series is modified ZAXIS 5B which DPF and EGR system are removed by Hitachi authorized dealers to allow the machines operate in the market where there is no access to an ultra low sulfur fuel. 5D model machine maintains the benefits of 5B model – fuel consumption and performance.

\*5D stands for 5B model which has completed "De-Tier" modification



"D edition" as a proof of 5D model

## What is “5D” model?



### ZAXIS-5B - Interim Tier 4 / Stage IIIB

The machine that equips DPF is designed to operate by using the ultra-low sulfur fuel (under 15ppm), so a filter contamination will be occurred earlier due to high sulfur fuel and causing regeneration error without removing DPF.

Export

### ZAXIS-5D - Tier 0

We recommend removing DPF to operate the machine under high sulfur fuel and without any emission regulation existing.

\*After De-Tier, the machine is not complied with any emission regulation, so please check and confirm your market regulation before operating the machine.

## PERFORMANCE & PRODUCTIVITY



### *"TRIAS" Hydraulic system*

The hydraulic system "TRIAS" is equipped with **three pumps** that supply an adequate amount of pressurized oil to each actuator, resulting in **high hydraulic efficiency** as well as **low fuel consumption**.

### Fuel consumption

**PWR mode** **17%** reduced

**ECO mode** **25%** reduced

\*20t class, VS ZX200-3 P mode

### *Power boost with a difference*

Our long-popular power boost feature has been increased by **10%** over normal mode for the new ZAXIS with the aim of having the operator feel the difference during excavation work.



## COMFORT & DURABILITY

### New multi-function LCD monitor

Large seven-inch screen that is easy to view. It provides a wide range of useful technical information, including a clear indication of the machine's status and settings with multi-lingual support in up to 32 languages. The monitor and ergonomically designed switches have been grouped together within easy reach of your right hand.

### ROPS-compliant cab

The pressurized and ROPS-compliant CRES V (Center pillar reinforced structure) cab prevents the penetration of dust and protects you from the potential risks of the job site.

The Roll-over Protective Structure (ROPS) is designed to protect the operator in the unlikely event of the machine tipping or rolling over.



# END

for

## **HMEC Used Stock Lisk**

Sep 2023

 **Hitachi Construction Machinery Co., Ltd.**

To contact any of HMEC experienced sales team or to find any machinery, please contact on:  
Beyene.Melaku@hmec.ae, Mahmoud.Soliman@hmec.ae