

HITACHI

Reliable solutions

GET more from your **Hitachi excavator**

Ground Engaging Tools (GET) for Hitachi mini and compact excavators



Ground Engaging Tools (GET)

Hitachi mini and compact excavators can be fitted with high-quality ground engaging tools (GET) to enhance their performance in a wide range of working conditions.

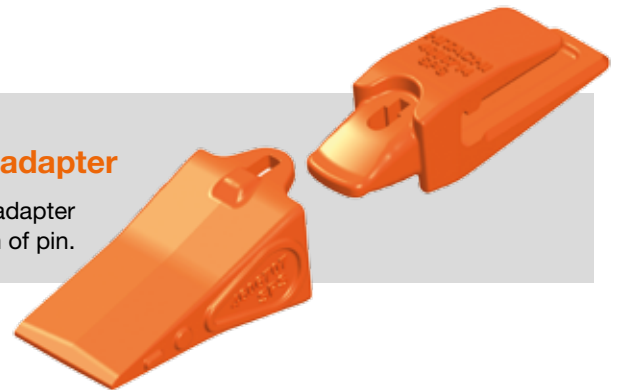
Exceptionally durable and competitively priced, they are manufactured to the same high standards as all Hitachi construction equipment.



18 series

STEP 1 Insert tooth into adapter

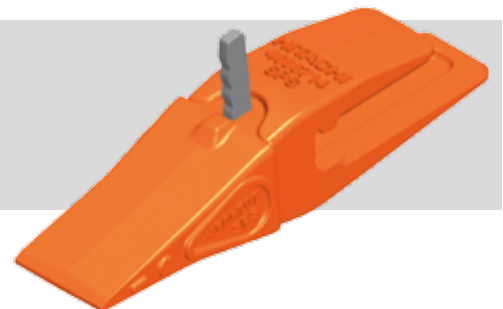
Teeth fit firmly into the adapter to ensure easy insertion of pin.



22 series

STEP 2 Insert pin into slot on adapter side or top

This locks the tooth into place.



25 series

STEP 3 Hammer pin into adapter side or top

Assembly is now complete.



Excavators

Series	Hitachi model
18	ZX10 - ZX33
22	ZX38 - ZX55
25	ZX65 - ZX85

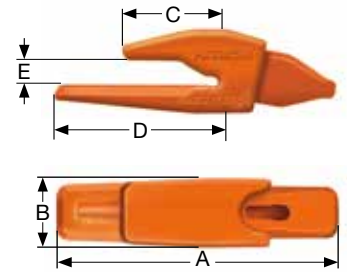
Locks

Series	Lock pin	Rubber
18	4480041SPS	4480013SPS
22	4479842SPS	4480010SPS
25	4480042SPS	4480011SPS



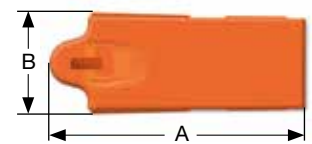
Adapters

Series	Lip size mm	Part number	A mm	B mm	C mm	D mm	E mm	Weight kg
18	16	E0A001282	187	56	65	105	16	2.6
22	20-22	4606715SPS	228	58	74	130	20-22	3.0
25	25	4606716SPS	228	75	94	136	25	4.2



Teeth

Series	Part number	A mm	B mm	C mm	Weight kg
18	4606707SPS	135	57	53	1.1
22	4606708SPS	165	58	68	1.4
25	4606709SPS	176	64	82	2.3



To find out more about GET for the Hitachi mini excavators, please contact your local dealer or visit

www.hitachicm.eu

© Hitachi Construction Machinery (Europe) NV (HCME). All rights reserved. Reproduction in whole or in part is forbidden except with the written permission of HCME. While every effort is made to ensure the accuracy of information published, HCME is not responsible for inaccuracies or omissions. All views expressed are not necessarily those of HCME.

Hitachi Construction Machinery (Europe) NV
 Siciliëweg 5 – haven 5112, 1045 AT Amsterdam
 PO Box 59239, 1040 KE Amsterdam, The Netherlands
 T: +31-(0)20 44 76 700 F: +31-(0)20 33 44 045
www.hitachicm.eu