

# SUPER LONG FRONT

ZAXIS200<sub>LC</sub> / ZAXIS240<sub>LC</sub> / ZAXIS280<sub>LC</sub> / ZAXIS330<sub>LC</sub>

A P P L I C A T I O N   &   A T T A C H M E N T



<b>Model Code</b>	ZX200LC-5G H15	ZX240LC-5G H18	ZX280LC-5G H18	ZX330LC-5G H18	ZX330LC-5G H22
<b>Engine Rated Power</b>	125 kW (168 HP)	132 kW (177 HP)	132 kW (177 HP)	184 kW (246 HP)	184 kW (246 HP)
<b>Back hoe Bucket (ISO Heaped)</b>	0.45 m <sup>3</sup>	0.40 m <sup>3</sup>	0.45 m <sup>3</sup>	0.52 m <sup>3</sup>	0.40 m <sup>3</sup>
<b>Operating Weight</b>	21 500 - 22 200 kg	25 600 - 26 300 kg	29 400 - 30 100 kg	33 000 - 34 000 kg	35 100 - 36 100 kg

# Super Long Front

## Super Long Reach Means Wide Working Ranges

### Smooth Front Action in Combined Operations

Abrupt movements of the super long front are suppressed by flow control valves in boom and arm cylinder circuits, making combined operations smooth.

### Strengthened Front Attachment

The front structure is reviewed and reinforced by adding reinforcing plates at areas on which stresses are concentrated.

### Matching Various Applications

The super long front is available to match varied applications, including river maintenance, slope finishing and light-duty excavation.



## SPECIFICATIONS

### ZX200LC-5G TYPE H15 SUPER LONG FRONT

#### ENGINE

Model .....	Isuzu CC-6BG1T
Type .....	4-cycle water-cooled, direct injection
Aspiration .....	Turbocharged, intercooled
No. of cylinders .....	6
Rated power	
ISO 9249, net .....	125 kW (168 HP) at 2 100 min <sup>-1</sup> (rpm)
SAE J1349, net .....	125 kW (168 HP) at 2 100 min <sup>-1</sup> (rpm)
Maximum torque .....	637 Nm (65 kgfm) at 1 800 min <sup>-1</sup> (rpm)
Piston displacement ..	6.494 L
Bore and stroke .....	105 mm x 125 mm
Batteries .....	2 x 12 V / 88 Ah

#### HYDRAULIC SYSTEM

##### Hydraulic Pumps

Main pumps .....	2 variable displacement axial piston pumps
Maximum oil flow ..	2 x 212 L/min
Pilot pump .....	1 gear pump
Maximum oil flow ..	33.6 L/min

##### Hydraulic Motors

Travel .....	2 variable displacement axial piston motors
Swing .....	1 axial piston motor

##### Relief Valve Settings

Implement circuit .....	34.3 MPa (350 kgf/cm <sup>2</sup> )
Swing circuit .....	26.8 MPa (273 kgf/cm <sup>2</sup> )
Travel circuit .....	34.3 MPa (350 kgf/cm <sup>2</sup> )
Pilot circuit .....	3.9 MPa (40 kgf/cm <sup>2</sup> )
Power boost .....	38.0 MPa (388 kgf/cm <sup>2</sup> )

#### Hydraulic Cylinders

	Quantity	Bore	Rod diameter
Boom	2	120 mm	85 mm
Arm	1	135 mm	100 mm
Bucket	1	95 mm	65 mm

#### UPPERSTRUCTURE

##### Revolving Frame

D-section frame skirt for resistance to deformation.

##### Swing Device

Axial piston motor with planetary reduction gear is bathed in oil. Swing circle is single-row. Swing parking brake is spring-set/hydraulic-released disc type.

Swing speed .....	13.5 min <sup>-1</sup> (rpm)
Swing torque .....	53 kNm (5 390 kgfm)

##### Operator's Cab

Independent spacious cab, 1 005 mm wide by 1 675 mm high, conforming to ISO\* Standards.

\* International Organization for Standardization

#### UNDERCARRIAGE

##### Tracks

Heat-treated connecting pins with dirt seals. Hydraulic (grease) track adjusters with shock-absorbing recoil springs.

##### Numbers of Rollers and Shoes on Each Side

Upper rollers .....	2
Lower rollers .....	8
Track shoes .....	49
Track guard .....	1

##### Travel Device

Each track driven by 2-speed axial piston motor. Parking brake is spring-set/hydraulic-released disc type. Automatic transmission system: High-Low.

Travel speeds .....	High : 0 to 5.5 km/h
	Low : 0 to 3.5 km/h

Maximum traction force .. 203 kN (20 700 kgf)

Gradeability .....

70% (35 degree) continuous

#### SERVICE REFILL CAPACITIES

Fuel tank .....	400.0 L
Engine coolant .....	23.0 L
Engine oil .....	25.0 L
Swing device .....	6.2 L
Travel device (each side).....	6.8 L
Hydraulic system .....	240.0 L
Hydraulic oil tank .....	135.0 L

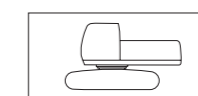
#### WEIGHTS AND GROUND PRESSURE

##### ZX200LC-5G TYPE H15 SUPER LONG FRONT:

Equipped with 8.14 m boom, 6.33 m arm and 0.45 m<sup>3</sup> bucket (SAE, PCSA heaped), 5 400 kg counterweight.

Shoe type	Shoe width	Operating weight	Ground pressure
Triple grouser	600 mm	21 500 kg	47 kPa (0.48 kgf/cm <sup>2</sup> )
	700 mm	21 900 kg	41 kPa (0.42 kgf/cm <sup>2</sup> )
	800 mm	22 200 kg	36 kPa (0.37 kgf/cm <sup>2</sup> )

##### Basic Machine Weight and Overall width



Excluding front end attachment, additional counterweight, fuel, hydraulic oil and coolant etc. Including counterweight.

##### ZX200LC-5G

Shoe width	Weight	Overall width
600 mm	17 100 kg	2 990 mm
700 mm	17 500 kg	3 090 mm
800 mm	17 800 kg	3 190 mm

#### BUCKET SPECIFICATIONS AND COMPATIBILITY

##### ZX200LC-5G

	Capacity ISO heaped	Width Without side cutters	Weight	Recommendation
				ZX200LC-5G H15
Backhoe	0.45 m <sup>3</sup>	850 mm	320 kg	⊙
Slope finishing	-	1 500 mm	360 kg	◇
Max.weight				1 130 kg

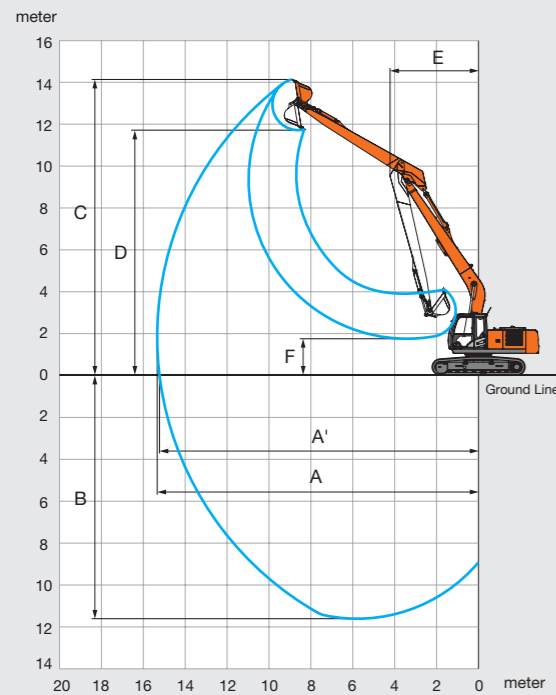
⊙ Suitable for materials with density of 1 800 kg/m<sup>3</sup> or less

◇ Slope-finishing service

# SPECIFICATIONS

## ZX200LC-5G TYPE H15 SUPER LONG FRONT

### WORKING RANGES

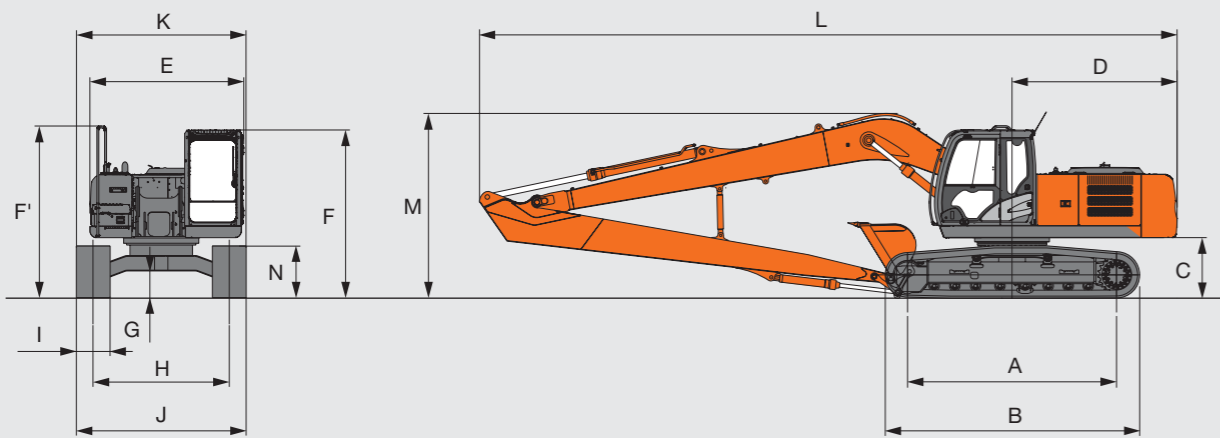


	ZX200LC-5G TYPE H15
A Max. digging reach	15 340
A' Max. digging reach (on ground)	15 230
B Max. digging depth	11 630
C Max. cutting height	14 110
D Max. dumping height	11 690
E Min. swing radius	4 230
F Min. dumping height	1 730
Bucket digging force ISO	84 kN (8 500 kgf)
Bucket digging force SAE:PCSA	73 kN (7 400 kgf)
Arm crowd force ISO	47 kN (4 800 kgf)
Arm crowd force SAE:PCSA	46 kN (4 700 kgf)

•Excluding track shoe lug

Unit: mm

### DIMENSIONS



Unit: mm

	ZX200LC-5G TYPE H15
A Distance between tumblers	3 660
B Undercarriage length	4 460
* C Counterweight clearance	1 030
D Rear-end swing radius	2 890
E Overall width of upperstructure	2 710
F Overall height of cab	2 950
F' Overall height of upperstructure	3 010
* G Min. ground clearance	450
H Track gauge	2 390
I Track shoe width	G 600 / G 700 / G 800
J Undercarriage width	2 990 / 3 090 / 3 190
K Overall width	2 990 / 3 090 / 3 190
L Overall length	12 210
M Overall height	3 230
N Track height with triple grouser shoes	920

\* Excluding track shoe lug

# LIFTING CAPACITIES (Without Bucket)

Notes: 1. Ratings are based on ISO 10567.

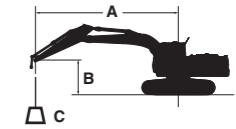
2. Lifting capacity does not exceed 75% of tipping load with the machine on firm, level ground or 87% full hydraulic capacity.

3. The load point is the center-line of the bucket pivot mounting pin on the arm.

4. \*Indicates load limited by hydraulic capacity.

5. 0 m = Ground.

For lifting capacities, subtract bucket and quick hitch weight from lifting capacities without bucket.



A: Load radius

B: Load point height

C: Lifting capacity

### ZX200LC-5G TYPE H15 SUPER LONG FRONT

Rating over-front Rating over-side or 360 degrees Unit : kg

Conditions	Load point height m	Load radius											
		1.5 m		3.0 m		4.5 m		6.0 m		7.5 m		9.0 m	
		Rating over-front	Rating over-side or 360 degrees	Rating over-front	Rating over-side or 360 degrees	Rating over-front	Rating over-side or 360 degrees	Rating over-front	Rating over-side or 360 degrees	Rating over-front	Rating over-side or 360 degrees	Rating over-front	Rating over-side or 360 degrees
Boom 8.14 m	10.5												
Arm 6.33 m	9.0												
Counterweight 5 400 kg	7.5												
Shoe 600 mm	6.0												
	4.5												
	3.0												
	1.5												
	0 (Ground)												
	-1.5	*1 840	*1 840	*2 790	*2 790	*5 310	*5 310	*6 900	4 270	5 120	3 190	3 970	2 500
	-3.0	*2 690	*2 690	*3 590	*3 590	*5 760	*5 760	6 860	4 120	4 980	3 060	3 870	2 400
	-4.5	*3 600	*3 600	*4 570	*4 570	*6 720	6 130	6 800	4 060	4 910	3 010	3 820	2 360
	-6.0	*4 600	*4 600	*5 740	*5 740	*8 140	6 210	6 830	4 090	4 920	3 010	3 820	2 360
	-7.5	*5 760	*5 760	*7 200	*7 200	*8 450	6 390	*6 470	4 190	5 000	3 080	3 890	2 430
	-9.0			*9 170	*9 170	*7 100	6 660	*5 490	4 380	*4 320	3 230		

Conditions	Load point height m	Load radius						At max. reach		
		10.5 m		12.0 m		13.5 m		meter		
		Rating over-front	Rating over-side or 360 degrees	Rating over-front	Rating over-side or 360 degrees	Rating over-front	Rating over-side or 360 degrees	Rating over-front	Rating over-side or 360 degrees	meter
Boom 8.14 m	10.5	*1 610	*1 610					*1 080	*1 080	11.1
Arm 6.33 m	9.0	*2 070	*2 070	*1 170	*1 170			*1 020	*1 020	12.1
Counterweight 5 400 kg	7.5	*2 310	*2 310	*1 810	*1 810			*980	*980	12.9
Shoe 600 mm	6.0	*2 550	*2 550	*2 160	2 000	*970	*970	*970	*970	13.5
	4.5	*2 780	2 460	*2 460	1 940	*1 450	*1 450	*980	*980	13.8
	3.0	*3 030	2 340	*2 780	1 860	*1 740	1 490	*1 000	*1 000	14.1
	1.5	*3 300	2 220	2 780	1 780	*1 900	1 450	*1 040	*1 040	14.1
	0 (Ground)	3 290	2 100	2 700	1 710	*1 890	1 400	*1 100	*1 100	14.0
	-1.5	3 190	2 010	2 640	1 650	*1 590	1 380	*1 190	*1 190	13.7
	-3.0	3 130	1 940	2 600	1 610			*1 320	*1 320	13.2
	-4.5	3 100	1 920	2 600	1 610			*1 510	*1 510	12.6
	-6.0	3 110	1 930					*1 790	1 700	11.7
	-7.5	*2 290	2 020					*2 290	2 020	10.5
	-9.0							*3 280	2 610	8.94

# EQUIPMENT

## ZX200LC-5G TYPE H15 SUPER LONG FRONT

Standard and optional equipment may vary by country, so please consult your Hitachi dealer for details.

● : Standard equipment ○ : Optional equipment

ENGINE	
Air cleaner double filters	●
Auto idle system	●
Cartridge-type engine oil filter	●
Cartridge-type fuel pre-filter	●
Cartridge-type fuel main filter	●
Dry-type air filter with evacuator valve (with air filter restriction indicator)	●
ECO/PWR mode control	●
Engine warm-up device	●
Fan guard	●
Water separator	●
Pre-cleaner	○
Dust-Proof indoor net	●
Radiator reserve tank	●
50 A alternator	●

HYDRAULIC SYSTEM	
Auto power lift	●
Control valve with main relief valve	●
Full-flow filter	●
High mesh full flow filter with restriction indicator	○
Pilot filter	●
Power boost	●
Suction filter	●
One extra port for control valve	●
Work mode selector	●

CAB	
All-weather sound suppressed steel cab	●
AM-FM radio with 2 speakers	●
Ashtray	●
Auto control air conditioner	●
AUX. terminal and storage	○
Cab (Center pillar reinforced structure)	●
Drink holder (rear side)	●
Drink holder with hot & cool (front side)	●
Electric double horn	●
Engine shut-off lever	●
Evacuation hammer	●
Fire extinguisher bracket	○
Floor mat	●
Footrest	●
Front window washer	●
Front windows on upper, lower and left side can be opened	●
Lower cab front guard	○
Upper cab front guard	○
Glove compartment	●
Hot & cool box	●
Intermittent windshield wipers	●
Key cylinder light	●
LED room light with door courtesy	●
OPG top guard Level I (ISO10262) compliant cab	●
Pilot control shut-off lever	●
Rear tray	●
Retractable seat belt	●
Rubber radio antenna	●
Seat : Fabric seat	●
Seat : mechanical suspension seat	○
Seat : air suspension seat with heater	○
Seat adjustment part : backrest, armrest, height and angle, slide forward / back	●
Short wrist control levers	●
4 fluid-filled elastic mounts	●
24V cigarette lighter	●

MONITOR SYSTEM	
Alarm buzzers: overheat, engine oil pressure, overload	●
Alarms: overheat, engine warning, engine oil pressure, alternator, minimum fuel level, hydraulic filter restriction, air filter restriction, work mode, overload, etc	●
Display of meters: water temperature, hour, fuel rate, clock	●
Other displays: work mode, auto-idle, glow, operating conditions, etc	●
32 languages selection	●

LIGHTS	
Additional cab roof front lights	○
Additional boom light with cover	○
2 working lights	●

UPPER STRUCTURE	
Electric fuel refilling pump	○
Fuel level float	●
Hydraulic oil level gauge	●
Rear view camera	○
Rear view mirror (right & left side)	●
Swing parking brake	●
Tool box	●
Undercover	●
Utility space	●
5 400 kg counterweight	●
2 x 88 Ah batteries	●

UNDERCARRIAGE	
Bolt-on sprocket	●
Reinforced track links with pin seals	●
Travel motor covers	●
Travel parking brake	●
9.0 mm reinforced track undercover	○
Track guard (each side) and hydraulic track adjuster	●
Upper and lower rollers	●
2 track guards	○
4 tie down hooks	●
600 mm triple grouser shoes	●
700 / 800 mm triple grouser shoes	○

FRONT ATTACHMENTS	
Centralized lubrication system	●
Flanged pin	●
HN bushing	●
0.45 m <sup>3</sup> bucket (ISO heaped)	●
6.33 m arm	●
8.14 m boom	●

MISCELLANEOUS	
Lockable fuel refilling cap	●
Lockable machine covers	●
Onboard information controller	●
Skid-resistant tapes, plates and handrails	●
Standard tool kit	●
Travel direction mark on track frame	●
Global e-Service	●

# SPECIFICATIONS

## ZX240LC-5G TYPE H18 SUPER LONG FRONT

ENGINE	
Model	Isuzu CC-6BG1T
Type	4-cycle water-cooled, direct injection
Aspiration	Turbocharged, intercooled
No. of cylinders	6
Rated power	
ISO 9249, net	132 kW (177 HP) at 2 150 min <sup>-1</sup> (rpm)
SAE J1349, net	132 kW (177 HP) at 2 150 min <sup>-1</sup> (rpm)
Maximum torque	637 Nm (65 kgfm) at 1 800 min <sup>-1</sup> (rpm)
Piston displacement	6.494 L
Bore and stroke	105 mm x 125 mm
Batteries	2 x 12 V / 88 Ah

HYDRAULIC SYSTEM	
<b>Hydraulic Pumps</b>	
Main pumps	2 variable displacement axial piston pumps
Maximum oil flow	2 x 223 L/min
Pilot pump	1 gear pump
Maximum oil flow	32.0 L/min

Hydraulic Motors	
Travel	2 variable displacement axial piston motors
Swing	1 axial piston motor

Relief Valve Settings	
Implement circuit	34.3 MPa (350 kgf/cm <sup>2</sup> )
Swing circuit	25.5 MPa (260 kgf/cm <sup>2</sup> )
Travel circuit	34.8 MPa (355 kgf/cm <sup>2</sup> )
Pilot circuit	3.9 MPa (40 kgf/cm <sup>2</sup> )
Power boost	38.0 MPa (388 kgf/cm <sup>2</sup> )

Hydraulic Cylinders			
	Quantity	Bore	Rod diameter
Boom	2	125 mm	90 mm
Arm	1	145 mm	105 mm
Bucket	1	95 mm	65 mm

UPPERSTRUCTURE	
<b>Revolving Frame</b>	
D-section frame skirt for resistance to deformation.	

Swing Device	
Axial piston motor with planetary reduction gear is bathed in oil. Swing circle is single-row. Swing parking brake is spring-set/hydraulic-released disc type.	
Swing speed	11.0 min <sup>-1</sup> (rpm)
Swing torque	61 kNm (6 210 kgfm)

**Operator's Cab**  
Independent spacious cab, 1 005 mm wide by 1 675 mm high, conforming to ISO\* Standards.  
\* International Organization for Standardization

## UNDERCARRIAGE

**Tracks**  
Heat-treated connecting pins with dirt seals. Hydraulic (grease) track adjusters with shock-absorbing recoil springs.

Numbers of Rollers and Shoes on Each Side	
Upper rollers	2
Lower rollers	9
Track shoes	51
Track guard	1

Travel Device	
Each track driven by 2-speed axial piston motor. Parking brake is spring-set/hydraulic-released disc type. Automatic transmission system: High-Low.	
Travel speeds	High : 0 to 5.5 km/h Low : 0 to 3.4 km/h
Maximum traction force	222 kN (22 600 kgf)
Gradeability	70% (35 degree) continuous

SERVICE REFILL CAPACITIES	
Fuel tank	510.0 L
Engine coolant	26.0 L
Engine oil	25.0 L
Swing device	9.1 L
Travel device (each side)	7.8 L
Hydraulic system	280.0 L
Hydraulic oil tank	156.0 L

## WEIGHTS AND GROUND PRESSURE

**ZX240LC-5G TYPE H18 SUPER LONG FRONT:**  
Equipped with 9.70 m boom, 7.88 m arm and 0.40 m<sup>3</sup> bucket (SAE, PCSA heaped), 6 600 kg counterweight.

Shoe type	Shoe width	Operating weight	Ground pressure
Triple grouser	600 mm	25 600 kg	51 kPa (0.52 kgf/cm <sup>2</sup> )
	700 mm	25 900 kg	44 kPa (0.45 kgf/cm <sup>2</sup> )
	800 mm	26 300 kg	39 kPa (0.40 kgf/cm <sup>2</sup> )

Basic Machine Weight and Overall width	
Excluding front end attachment, additional counterweight, fuel, hydraulic oil and coolant etc. Including counterweight.	

ZX240LC-5G		
Shoe width	Weight	Overall width
600 mm	19 800 kg	3 190 mm
700 mm	20 200 kg	3 290 mm
800 mm	20 500 kg	3 390 mm

## BUCKET SPECIFICATIONS AND COMPATIBILITY

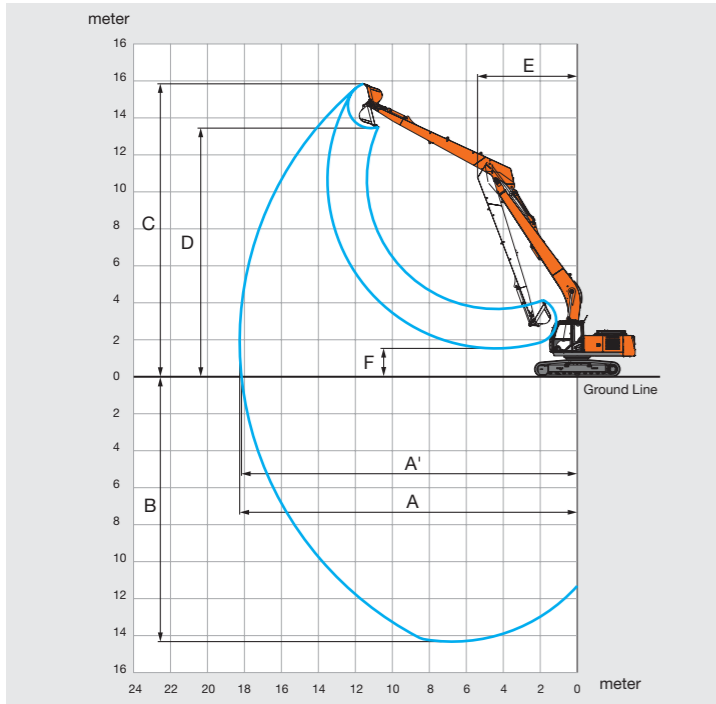
ZX240LC-5G				
	Capacity ISO heaped	Width Without side cutters	Weight	Recommendation
				ZX240LC-5G H18
Backhoe	0.40 m <sup>3</sup>	770 mm	300 kg	◎
Slope finishing	-	1 500 mm	360 kg	◇
Max.weight				1 020 kg

◎ Suitable for materials with density of 1 800 kg/m<sup>3</sup> or less  
◇ Slope-finishing service

# SPECIFICATIONS

## ZX240LC-5G TYPE H18 SUPER LONG FRONT

### WORKING RANGES

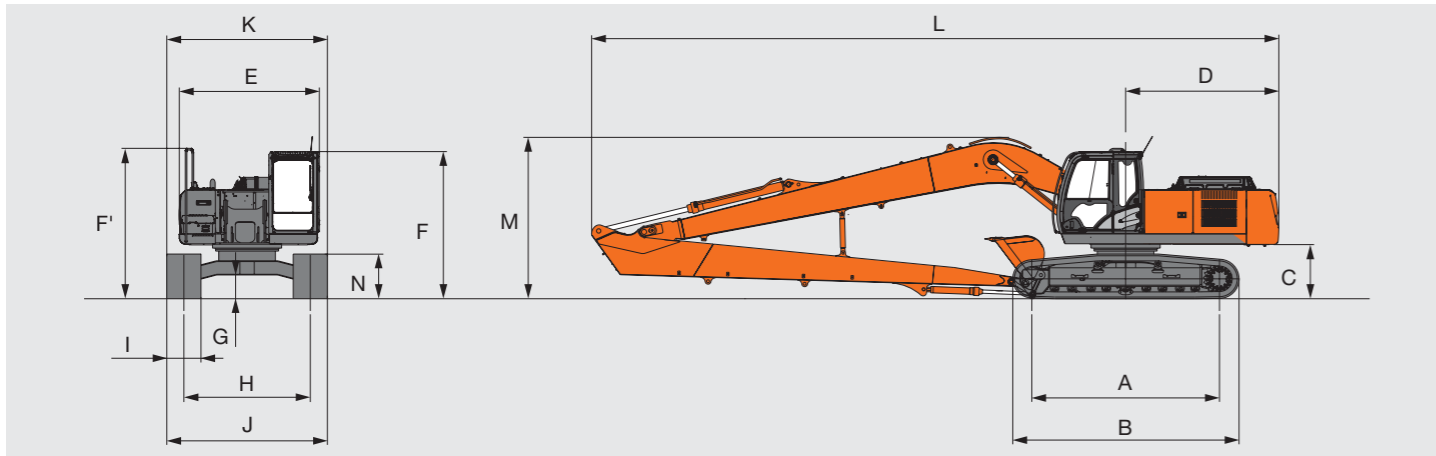


	ZX240LC-5G TYPE H18
A Max. digging reach	18 260
A' Max. digging reach (on ground)	18 160
B Max. digging depth	14 350
C Max. cutting height	15 820
D Max. dumping height	13 420
E Min. swing radius	5 390
F Min. dumping height	1 510
Bucket digging force ISO	84 kN (8 500 kgf)
Bucket digging force SAE:PCSA	73 kN (7 400 kgf)
Arm crowd force ISO	48 kN (4 900 kgf)
Arm crowd force SAE:PCSA	47 kN (4 800 kgf)

•Excluding track shoe lug

Unit: mm

### DIMENSIONS



Unit: mm

	ZX240LC-5G TYPE H18
A Distance between tumblers	3 850
B Undercarriage length	4 640
* C Counterweight clearance	1 080
D Rear-end swing radius	3 140
E Overall width of upperstructure	2 870
F Overall height of cab	3 010
F' Overall height of upperstructure	3 080
* G Min. ground clearance	460
H Track gauge	2 590
I Track shoe width	G 600 / G 700 / G 800
J Undercarriage width	3 190 / 3 290 / 3 390
K Overall width	3 190 / 3 290 / 3 390
L Overall length	14 080
M Overall height	3 310
N Track height with triple grouser shoes	920

\* Excluding track shoe lug

# LIFTING CAPACITIES (Without Bucket)

Notes: 1. Ratings are based on ISO 10567.

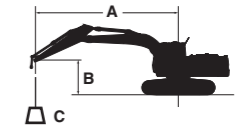
2. Lifting capacity does not exceed 75% of tipping load with the machine on firm, level ground or 87% full hydraulic capacity.

3. The load point is the center-line of the bucket pivot mounting pin on the arm.

4. \*Indicates load limited by hydraulic capacity.

5. 0 m = Ground.

For lifting capacities, subtract bucket and quick hitch weight from lifting capacities without bucket.



A: Load radius

B: Load point height

C: Lifting capacity

### ZX240LC-5G TYPE H18 SUPER LONG FRONT

Rating over-front Rating over-side or 360 degrees Unit : kg

Conditions	Load point height m	Load radius m																
		1.5		3.0		4.5		6.0		7.5		9.0		10.5				
		Rating over-front	Rating over-side or 360 degrees	Rating over-front	Rating over-side or 360 degrees	Rating over-front	Rating over-side or 360 degrees	Rating over-front	Rating over-side or 360 degrees	Rating over-front	Rating over-side or 360 degrees	Rating over-front	Rating over-side or 360 degrees	Rating over-front	Rating over-side or 360 degrees			
Boom 9.70 m Arm 7.88 m Counterweight 6 600 kg Shoe 600 mm	12.0																	
	10.5																	
	9.0																	
	7.5																	
	6.0																	
	4.5																*2 460	*2 460
	3.0																*2 770	*2 770
	1.5																*3 090	2 870
	0 (Ground)																*3 400	2 660
	-1.5	*1 360	*1 360	*2 060	*2 060	*3 770	*3 770	*7 040	5 230	*4 860	4 260	*3 970	3 330	*3 400	*3 670	2 490		
	-3.0	*2 040	*2 040	*2 670	*2 670	*4 090	*4 090	*7 090	4 950	*5 730	3 690	*4 630	2 900	3 770	2 350			
	-4.5	*2 740	*2 740	*3 380	*3 380	*4 720	*4 720	*7 400	4 820	5 860	3 560	4 540	2 790	3 670	2 260			
	-6.0	*3 480	*3 480	*4 190	*4 190	*5 550	*5 550	*7 660	4 790	5 800	3 510	4 480	2 740	3 630	2 220			
-7.5	*4 290	*4 290	*5 110	*5 110	*6 620	*6 620	*7 470	4 850	5 820	3 530	4 490	2 740	3 630	2 220				
-9.0	*5 210	*5 210	*6 200	*6 200	*7 970	7 740	*7 070	4 980	*5 650	3 610	4 560	2 800	3 690	2 280				
-10.5	*6 270	*6 270	*7 530	*7 530	*8 280	8 070	*6 390	5 200	*5 140	3 770	*4 220	2 930	*3 460	2 400				
-12.0			*9 280	*9 280	*6 790	*6 790	*5 320	*5 320	*4 270	4 020	*3 390	3 160						

Conditions	Load point height m	At max. reach								meter		
		12.0		13.5		15.0		16.5				
		Rating over-front	Rating over-side or 360 degrees	Rating over-front	Rating over-side or 360 degrees	Rating over-front	Rating over-side or 360 degrees	Rating over-front	Rating over-side or 360 degrees			
Boom 9.70 m Arm 7.88 m Counterweight 6 600 kg Shoe 600 mm	12.0			*1 290	*1 290					*1 160	*1 160	13.7
	10.5			*1 820	*1 820					*1 110	*1 110	14.7
	9.0			*1 950	*1 950	*1 460	*1 460			*1 080	*1 080	15.4
	7.5	*1 990	*1 990	*2 000	*2 000	*1 840	1 790			*1 060	*1 060	16.1
	6.0	*2 140	*2 140	*2 100	*2 100	*2 090	1 750	*1 060	*1 060	*1 060	*1 060	16.5
	4.5	*2 330	*2 330	*2 240	2 100	*2 170	1 690	*1 430	1 350	*1 080	*1 080	16.8
	3.0	*2 550	2 470	*2 390	1 990	*2 280	1 620	*1 640	1 310	*1 100	*1 100	17.0
	1.5	*2 780	2 310	*2 560	1 880	*2 400	1 540	*1 750	1 270	*1 140	*1 140	17.0
	0 (Ground)	*3 000	2 160	*2 720	1 780	2 360	1 470	*1 740	1 220	*1 200	1 160	16.9
	-1.5	*3 210	2 040	2 710	1 690	2 300	1 410	*1 550	1 190	*1 280	1 170	16.7
	-3.0	3 120	1 940	2 630	1 620	2 260	1 370			*1 390	1 200	16.3
	-4.5	3 050	1 870	2 590	1 580	2 230	1 350			*1 530	1 260	15.8
	-6.0	3 020	1 840	2 580	1 560	*1 860	1 360			*1 730	1 360	15.1
-7.5	3 030	1 850	2 610	1 590					*2 010	1 510	14.2	
-9.0	3 100	1 920							*2 450	1 750	13.0	
-10.5									*2 920	2 140	11.6	
-12.0									*2 970	2 890	9.72	

# EQUIPMENT

## ZX240LC-5G TYPE H18 SUPER LONG FRONT

Standard and optional equipment may vary by country, so please consult your Hitachi dealer for details.

● : Standard equipment ○ : Optional equipment

ENGINE	CAB
Air cleaner double filters ●	All-weather sound suppressed steel cab ●
Auto idle system ●	AM-FM radio with 2 speakers ●
Cartridge-type engine oil filter ●	Ashtray ●
Cartridge-type fuel pre-filter ●	Auto control air conditioner ●
Cartridge-type fuel main filter ●	AUX. terminal and storage ○
Dry-type air filter with evacuator valve (with air filter restriction indicator) ●	Cab (Center pillar reinforced structure) ●
ECO/PWR mode control ●	Drink holder (rear side) ●
Engine warm-up device ●	Drink holder with hot & cool (front side) ●
Fan guard ●	Electric double horn ●
Water separator ●	Engine shut-off lever ●
Pre-cleaner ○	Evacuation hammer ●
Dust-Proof indoor net ●	Fire extinguisher bracket ○
Radiator reserve tank ●	Floor mat ●
50 A alternator ●	Footrest ●
	Front window washer ●
	Front windows on upper, lower and left side can be opened ●
	Lower cab front guard ○
	Upper cab front guard ○
	Glove compartment ●
	Hot & cool box ●
	Intermittent windshield wipers ●
	Key cylinder light ●
	LED room light with door courtesy ●
	OPG top guard Level I (ISO10262) compliant cab ●
	Pilot control shut-off lever ●
	Rear tray ●
	Retractable seat belt ●
	Rubber radio antenna ●
	Seat : Fabric seat ●
	Seat : mechanical suspension seat ○
	Seat : air suspension seat with heater ○
	Seat adjustment part : backrest, armrest, height and angle, slide forward / back ●
	Short wrist control levers ●
	4 fluid-filled elastic mounts ●
	24V cigarette lighter ●

MONITOR SYSTEM
Alarm buzzers: overheat, engine oil pressure, overload ●
Alarms: overheat, engine warning, engine oil pressure, alternator, minimum fuel level, hydraulic filter restriction, air filter restriction, work mode, overload, etc ●
Display of meters: water temperature, hour, fuel rate, clock ●
Other displays: work mode, auto-idle, glow, operating conditions, etc ●
32 languages selection ●

LIGHTS
Additional cab roof front lights ○
Additional boom light with cover ○
2 working lights ●

UPPER STRUCTURE
Electric fuel refilling pump ○
Fuel level float ●
Hydraulic oil level gauge ●
Rear view camera ○
Rear view mirror (right & left side) ●
Swing parking brake ●
Tool box ●
Undercover ●
Utility space ●
6 600 kg counterweight ●
2 x 88 Ah batteries ●

UNDERCARRIAGE
Bolt-on sprocket ●
Reinforced track links with pin seals ●
Travel motor covers ●
Travel parking brake ●
9.0 mm reinforced track undercover ○
Track guard (each side) and hydraulic track adjuster ●
Upper and lower rollers ●
2 track guards ○
4 tie down hooks ●
600 mm triple grouser shoes ●
700 / 800 mm triple grouser shoes ○

FRONT ATTACHMENTS
Centralized lubrication system ●
Flanged pin ●
HN bushing ●
0.40 m <sup>3</sup> bucket (ISO heaped) ●
7.88 m arm ●
9.70 m boom ●

MISCELLANEOUS
Lockable fuel refilling cap ●
Lockable machine covers ●
Onboard information controller ●
Skid-resistant tapes, plates and handrails ●
Standard tool kit ●
Travel direction mark on track frame ●
Global e-Service ●

# SPECIFICATIONS

## ZX280LC-5G TYPE H18 SUPER LONG FRONT

### ENGINE

Model .....	Isuzu CC-6BG1T
Type .....	4-cycle water-cooled, direct injection
Aspiration .....	Turbocharged, intercooled
No. of cylinders .....	6
Rated power	
ISO 9249, net .....	132 kW (177 HP) at 2 150 min <sup>-1</sup> (rpm)
SAE J1349, net .....	132 kW (177 HP) at 2 150 min <sup>-1</sup> (rpm)
Maximum torque .....	637 Nm (65 kgfm) at 1 800 min <sup>-1</sup> (rpm)
Piston displacement ..	6.494 L
Bore and stroke .....	105 mm x 125 mm
Batteries .....	2 x 12 V / 88 Ah

### HYDRAULIC SYSTEM

Hydraulic Pumps	
Main pumps .....	2 variable displacement axial piston pumps
Maximum oil flow ..	2 x 236 L/min
Pilot pump .....	1 gear pump
Maximum oil flow ..	34.0 L/min

Hydraulic Motors	
Travel .....	2 variable displacement axial piston motors
Swing .....	1 axial piston motor

Relief Valve Settings	
Implement circuit .....	34.3 MPa (350 kgf/cm <sup>2</sup> )
Swing circuit .....	27.9 MPa (285 kgf/cm <sup>2</sup> )
Travel circuit .....	34.8 MPa (355 kgf/cm <sup>2</sup> )
Pilot circuit .....	3.9 MPa (40 kgf/cm <sup>2</sup> )
Power boost .....	38.0 MPa (388 kgf/cm <sup>2</sup> )

Hydraulic Cylinders	Quantity	Bore	Rod diameter
Boom	2	135 mm	95 mm
Arm	1	145 mm	105 mm
Bucket	1	95 mm	65 mm

### UPPERSTRUCTURE

**Revolving Frame**  
D-section frame skirt for resistance to deformation.

**Swing Device**  
Axial piston motor with planetary reduction gear is bathed in oil. Swing circle is single-row. Swing parking brake is spring-set/hydraulic-released disc type.

Swing speed .....	10.3 min <sup>-1</sup> (rpm)
Swing torque .....	78 kNm (7 920 kgfm)

**Operator's Cab**  
Independent spacious cab, 1 005 mm wide by 1 675 mm high, conforming to ISO\* Standards.  
\* International Organization for Standardization

### UNDERCARRIAGE

**Tracks**  
Heat-treated connecting pins with dirt seals. Hydraulic (grease) track adjusters with shock-absorbing recoil springs.

Numbers of Rollers and Shoes on Each Side	
Upper rollers .....	2
Lower rollers .....	8
Track shoes .....	48
Track guard .....	1

**Travel Device**  
Each track driven by 2-speed axial piston motor. Parking brake is spring-set/hydraulic-released disc type. Automatic transmission system: High-Low.

Travel speeds .....	High : 0 to 5.2 km/h
	Low : 0 to 3.1 km/h

Maximum traction force .. 246 kN (24 600 kgf)

Gradeability .....

70% (35 degree) continuous

### SERVICE REFILL CAPACITIES

Fuel tank .....	510.0 L
Engine coolant .....	26.0 L
Engine oil .....	25.0 L
Swing device .....	11.7 L
Travel device (each side).....	9.2 L
Hydraulic system .....	290.0 L
Hydraulic oil tank .....	156.0 L

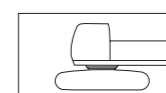
### WEIGHTS AND GROUND PRESSURE

#### ZX280LC-5G TYPE H18 SUPER LONG FRONT:

Equipped with 9.70 m boom, 7.88 m arm and 0.45 m<sup>3</sup> bucket (SAE, PCSA heaped), 7 000 kg counterweight.

Shoe type	Shoe width	Operating weight	Ground pressure
Triple grouser	600 mm	29 400 kg	55 kPa (0.56 kgf/cm <sup>2</sup> )
	700 mm	29 700 kg	48 kPa (0.49 kgf/cm <sup>2</sup> )
	800 mm	30 100 kg	42 kPa (0.43 kgf/cm <sup>2</sup> )

#### Basic Machine Weight and Overall width



Excluding front end attachment, additional counterweight, fuel, hydraulic oil and coolant etc. Including counterweight.

ZX280LC-5G		
Shoe width	Weight	Overall width
600 mm	23 500 kg	3 190 mm
700 mm	23 800 kg	3 290 mm
800 mm	24 200 kg	3 390 mm

### BUCKET SPECIFICATIONS AND COMPATIBILITY

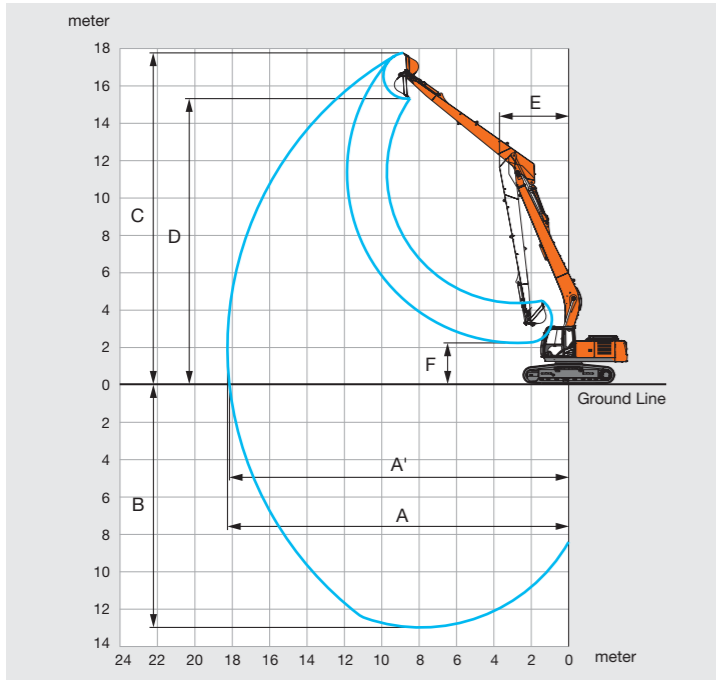
ZX280LC-5G	Capacity ISO heaped	Width Without side cutters	Weight	Recommendation
				ZX280LC-5G H18
Backhoe	0.45 m <sup>3</sup>	850 mm	320 kg	◎
Slope finishing	-	1 500 mm	360 kg	◇
Max.weight				1 130 kg

◎ Suitable for materials with density of 1 800 kg/m<sup>3</sup> or less  
◇ Slope-finishing service

# SPECIFICATIONS

## ZX280LC-5G TYPE H18 SUPER LONG FRONT

### WORKING RANGES

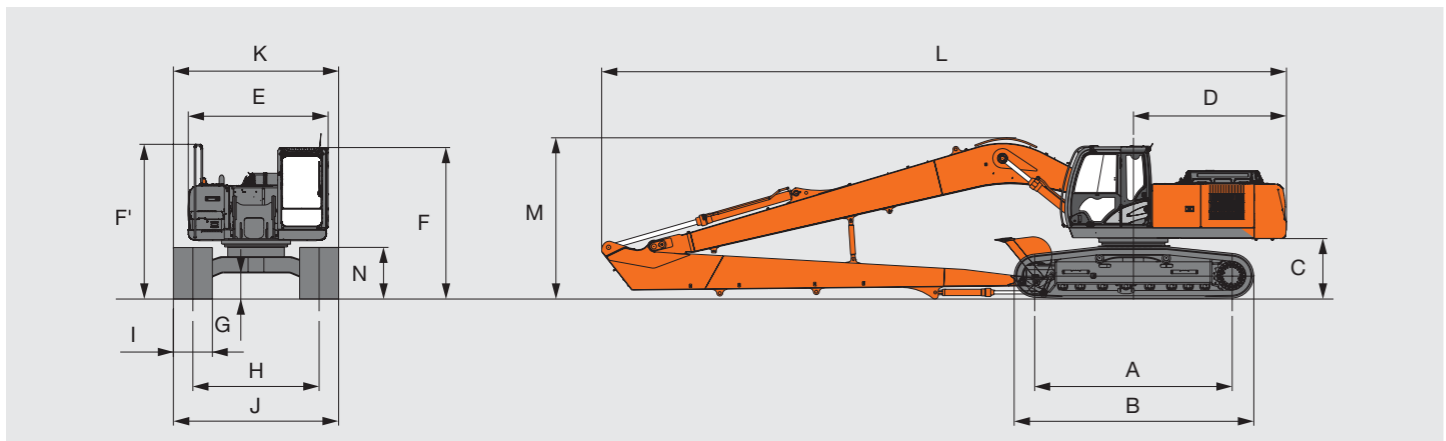


	ZX280LC-5G TYPE H18
A Max. digging reach	18 260
A' Max. digging reach (on ground)	18 150
B Max. digging depth	13 010
C Max. cutting height	17 730
D Max. dumping height	15 280
E Min. swing radius	3 700
F Min. dumping height	2 210
Bucket digging force ISO	84 kN (8 500 kgf)
Bucket digging force SAE:PCSA	73 kN (7 400 kgf)
Arm crowd force ISO	48 kN (4 900 kgf)
Arm crowd force SAE:PCSA	47 kN (4 800 kgf)

\*Excluding track shoe lug

Unit: mm

### DIMENSIONS



Unit: mm

	ZX280LC-5G TYPE H18
A Distance between tumbler	4 050
B Undercarriage length	4 950
* C Counterweight clearance	1 140
D Rear-end swing radius	3 140
E Overall width of upperstructure	2 870
F Overall height of cab	3 120
F' Overall height of upperstructure	3 180
* G Min. ground clearance	510
H Track gauge	2 590
I Track shoe width	G 600 / G 700 / G 800
J Undercarriage width	3 190 / 3 290 / 3 390
K Overall width	3 190 / 3 290 / 3 390
L Overall length	14 050
M Overall height	3 310
N Track height with triple grouser shoes	1 070

\* Excluding track shoe lug

# LIFTING CAPACITIES (Without Bucket)

Notes: 1. Ratings are based on ISO 10567.

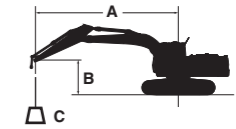
2. Lifting capacity does not exceed 75% of tipping load with the machine on firm, level ground or 87% full hydraulic capacity.

3. The load point is the center-line of the bucket pivot mounting pin on the arm.

4. \*Indicates load limited by hydraulic capacity.

5. 0 m = Ground.

For lifting capacities, subtract bucket and quick hitch weight from lifting capacities without bucket.



A: Load radius

B: Load point height

C: Lifting capacity

### ZX280LC-5G SUPER LONG FRONT

Rating over-front Rating over-side or 360 degrees Unit: kg

Conditions	Load point height m	Load radius															
		1.5 m		3.0 m		4.5 m		6.0 m		7.5 m		9.0 m		10.5 m		12.0 m	
		Rating over-front	Rating over-side or 360 degrees	Rating over-front	Rating over-side or 360 degrees	Rating over-front	Rating over-side or 360 degrees	Rating over-front	Rating over-side or 360 degrees	Rating over-front	Rating over-side or 360 degrees	Rating over-front	Rating over-side or 360 degrees	Rating over-front	Rating over-side or 360 degrees		
Boom 9.70 m	12.0																
Arm 7.88 m	10.5																
Counterweight 7 000 kg	9.0																
Shoe 600 mm	7.5																
	6.0																*2 690
	4.5														*3 170	*3 170	*3 040
	3.0														*3 800	3 470	*3 510
	1.5														*4 230	3 240	*3 820
	0 (Ground)														*4 640	3 030	4 050
	-1.5	*1 400	*1 400	*2 090	*2 090	*3 770	*3 770	*7 630	5 970	*7 230	4 480	5 860	3 530	4 730	2 860	3 920	2 360
	-3.0	*2 080	*2 080	*2 710	*2 710	*4 120	*4 120	*7 090	5 700	7 310	4 250	5 670	3 350	4 590	2 720	3 810	2 260
	-4.5	*2 780	*2 780	*3 430	*3 430	*4 760	*4 760	*7 430	5 570	7 170	4 120	5 550	3 240	4 490	2 640	3 740	2 200
	-6.0	*3 530	*3 530	*4 240	*4 240	*5 610	*5 610	*8 290	5 550	7 110	4 080	5 490	3 190	4 450	2 600	3 710	2 170
	-7.5	*4 350	*4 350	*5 170	*5 170	*6 690	*6 690	*9 600	5 610	7 140	4 100	5 500	3 200	4 450	2 600	3 730	2 180
	-9.0	*5 270	*5 270	*6 270	*6 270	*8 060	*8 060	*9 350	5 750	7 240	4 190	5 570	3 260	4 520	2 660	3 800	2 250
	-10.5			*7 630	*7 630	*9 930	9 230	*8 430	5 970	*6 820	4 350	*5 620	3 400	*4 620	2 790		
	-12.0					*8 820	*8 820	*6 950	6 290	*5 610	4 600	*4 460	3 630				

Conditions	Load point height m	Load radius						At max. reach		
		13.5 m		15.0 m		16.5 m		Rating over-front	Rating over-side or 360 degrees	meter
		Rating over-front	Rating over-side or 360 degrees	Rating over-front	Rating over-side or 360 degrees	Rating over-front	Rating over-side or 360 degrees			
Boom 9.70 m	12.0	*1 340	*1 340					*1 150	*1 150	13.7
Arm 7.88 m	10.5	*1 840	*1 840					*1 100	*1 100	14.7
Counterweight 7 000 kg	9.0	*2 100	*2 100	*1 490	*1 490			*1 070	*1 070	15.5
Shoe 600 mm	7.5	*2 300	*2 300	*1 850	*1 850			*1 060	*1 060	16.1
	6.0	*2 520	2 480	*2 120	2 000	*1 060	*1 060	*1 060	*1 060	16.5
	4.5	*2 790	2 380	*2 350	1 940	*1 440	*1 440	*1 080	*1 080	16.8
	3.0	*3 140	2 270	*2 590	1 870	*1 640	1 540	*1 100	*1 100	17.0
	1.5	3 510	2 160	*2 830	1 790	*1 750	1 490	*1 150	*1 150	17.0
	0 (Ground)	3 400	2 060	2 890	1 720	*1 740	1 450	*1 210	*1 210	16.9
	-1.5	3 300	1 970	2 830	1 660	*1 530	1 420	*1 290	*1 290	16.7
	-3.0	3 230	1 900	2 780	1 620			*1 390	*1 390	16.3
	-4.5	3 180	1 860	*2 750	1 600			*1 540	1 500	15.7
	-6.0	3 170	1 850	*1 740	1 610			*1 740	1 610	15.0
	-7.5	3 210	1 880					*2 030	1 790	14.1
	-9.0							*2 480	2 060	13.0
	-10.5							*3 310	2 520	11.5
	-12.0							*4 000	3 370	9.59

# EQUIPMENT

## ZX280LC-5G TYPE H18 SUPER LONG FRONT

Standard and optional equipment may vary by country, so please consult your Hitachi dealer for details.

● : Standard equipment ○ : Optional equipment

ENGINE	
Air cleaner double filters	●
Auto idle system	●
Cartridge-type engine oil filter	●
Cartridge-type fuel pre-filter	●
Cartridge-type fuel main filter	●
Dry-type air filter with evacuator valve (with air filter restriction indicator)	●
ECO/PWR mode control	●
Engine warm-up device	●
Fan guard	●
Water separator	●
Pre-cleaner	○
Dust-Proof indoor net	●
Radiator reserve tank	●
50 A alternator	●

HYDRAULIC SYSTEM	
Auto power lift	●
Control valve with main relief valve	●
Full-flow filter	●
High mesh full flow filter with restriction indicator	○
Pilot filter	●
Power boost	●
Suction filter	●
One extra port for control valve	●
Work mode selector	●

CAB	
All-weather sound suppressed steel cab	●
AM-FM radio with 2 speakers	●
Ashtray	●
Auto control air conditioner	●
AUX. terminal and storage	○
Cab (Center pillar reinforced structure)	●
Drink holder (rear side)	●
Drink holder with hot & cool (front side)	●
Electric double horn	●
Engine shut-off lever	●
Evacuation hammer	●
Fire extinguisher bracket	○
Floor mat	●
Footrest	●
Front window washer	●
Front windows on upper, lower and left side can be opened	●
Lower cab front guard	○
Upper cab front guard	○
Glove compartment	●
Hot & cool box	●
Intermittent windshield wipers	●
Key cylinder light	●
LED room light with door courtesy	●
OPG top guard Level I (ISO10262) compliant cab	●
Pilot control shut-off lever	●
Rear tray	●
Retractable seat belt	●
Rubber radio antenna	●
Seat : mechanical suspension seat	○
Seat : air suspension seat with heater	○
Seat adjustment part : backrest, armrest, height and angle, slide forward / back	●
Short wrist control levers	●
4 fluid-filled elastic mounts	●
24V cigarette lighter	●

MONITOR SYSTEM	
Alarm buzzers: overheating, engine oil pressure, overload	●
Alarms: overheating, engine warning, engine oil pressure, alternator, minimum fuel level, hydraulic filter restriction, air filter restriction, work mode, overload, etc	●
Display of meters: water temperature, hour, fuel rate, clock	●
Other displays: work mode, auto-idle, glow, operating conditions, etc	●
32 languages selection	●

LIGHTS	
Additional cab roof front lights	○
Additional boom light with cover	○
2 working lights	●

UPPER STRUCTURE	
Electric fuel refilling pump	○
Fuel level float	●
Hydraulic oil level gauge	●
Rear view camera	○
Rear view mirror (right & left side)	●
Swing parking brake	●
Tool box	●
Undercover	●
Utility space	●
7 000 kg counterweight	●
2 x 88 Ah batteries	●

UNDERCARRIAGE	
Bolt-on sprocket	●
Reinforced track links with pin seals	●
Travel motor covers	●
Travel parking brake	●
9.0 mm reinforced track undercover	○
Track guard (each side) and hydraulic track adjuster	●
Upper and lower rollers	●
3 track guards	○
4 tie down hooks	●
600 mm triple grouser shoes	●
700 / 800 mm triple grouser shoes	○

FRONT ATTACHMENTS	
Centralized lubrication system	●
Flanged pin	●
HN bushing	●
0.45 m³ bucket (ISO heaped)	●
7.88 m arm	●
9.70 m boom	●

MISCELLANEOUS	
Lockable fuel refilling cap	●
Lockable machine covers	●
Onboard information controller	●
Skid-resistant tapes, plates and handrails	●
Standard tool kit	●
Travel direction mark on track frame	●
Global e-Service	●

# SPECIFICATIONS

## ZX330LC-5G TYPE H18 / H22 SUPER LONG FRONT

ENGINE	
Model	Isuzu AH-6HK1X
Type	4-cycle water-cooled, direct injection
Aspiration	Turbocharged, intercooled
No. of cylinders	6
Rated power	
ISO 9249, net	184 kW (246 HP) at 2 000 min <sup>-1</sup> (rpm)
SAE J1349, net	184 kW (246 HP) at 2 000 min <sup>-1</sup> (rpm)
Maximum torque	873 Nm (89.0 kgfm) at 1 700 min <sup>-1</sup> (rpm)
Piston displacement	7.790 L
Bore and stroke	115 mm x 125 mm
Batteries	2 x 12 V / 128 Ah

HYDRAULIC SYSTEM	
<b>Hydraulic Pumps</b>	
Main pumps	2 variable displacement axial piston pumps
Maximum oil flow	2 x 279 L/min
Pilot pump	1 gear pump
Maximum oil flow	32.8 L/min

Hydraulic Motors	
Travel	2 variable displacement axial piston motors
Swing	1 axial piston motor

Relief Valve Settings	
Implement circuit	34.3 MPa (350 kgf/cm <sup>2</sup> )
Swing circuit	26.9 MPa (275 kgf/cm <sup>2</sup> )
Travel circuit	34.8 MPa (355 kgf/cm <sup>2</sup> )
Pilot circuit	3.9 MPa (40 kgf/cm <sup>2</sup> )
Power boost	38.0 MPa (388 kgf/cm <sup>2</sup> )

	ZX330LC-5G H18			ZX330LC-5G H22		
	Quantity	Bore	Rod diameter	Quantity	Bore	Rod diameter
Boom	2	145 mm	100 mm	2	145 mm	100 mm
Arm	1	170 mm	115 mm	1	170 mm	115 mm
Bucket	1	105 mm	75 mm	1	95 mm	65 mm

UPPERSTRUCTURE	
<b>Revolving Frame</b>	
D-section frame skirt for resistance to deformation.	

Swing Device	
Axial piston motor with planetary reduction gear is bathed in oil. Swing circle is single-row. Swing parking brake is spring-set/hydraulic-released disc type.	
Swing speed	10.7 min <sup>-1</sup> (rpm)
Swing torque	100 kNm (10 126 kgfm)

**Operator's Cab**  
Independent spacious cab, 1 005 mm wide by 1 675 mm high, conforming to ISO\* Standards.  
\* International Organization for Standardization

UNDERCARRIAGE	
<b>Track</b>	
Heat-treated connecting pins with dirt seals. Hydraulic (grease) track adjusters with shock-absorbing recoil springs.	

Numbers of Rollers and Shoes on Each Side	
Upper rollers	2
Lower rollers	8
Track shoes	48
Track guards	3

Travel Device	
Each track driven by 2-speed axial piston motor. Parking brake is spring-set/hydraulic-released disc type. Automatic transmission system: High-Low.	
Travel speeds	High : 0 to 4.9 km/h Low : 0 to 3.1 km/h
Maximum traction force	298 kN (30 400 kgf)
Gradeability	70% (35 degree) continuous

SERVICE REFILL CAPACITIES	
Fuel tank	630.0 L
Engine coolant	35.0 L
Engine oil	36.0 L
Swing device	15.7 L
Travel device (each side)	9.2 L
Hydraulic system	340.0 L
Hydraulic oil tank	180.0 L

WEIGHTS AND GROUND PRESSURE			
<b>ZX330LC-5G TYPE H18 SUPER LONG FRONT:</b>			
Equipped with 9.95 m boom, 7.52 m arm and 0.52 m³ bucket (SAE, PCSA heaped), 7 600 kg counterweight.			
Shoe type	Shoe width	Operating weight	Ground pressure
Triple grouser	600 mm	33 000 kg	62 kPa (0.63 kgf/cm <sup>2</sup> )
	700 mm	33 600 kg	54 kPa (0.55 kgf/cm <sup>2</sup> )
	800 mm	34 000 kg	48 kPa (0.49 kgf/cm <sup>2</sup> )

WEIGHTS AND GROUND PRESSURE			
<b>ZX330LC-5G TYPE H22 SUPER LONG FRONT:</b>			
Equipped with 12.10 m boom, 9.40 m arm and 0.40 m³ bucket (SAE, PCSA heaped), 9 600 kg counterweight.			
Shoe type	Shoe width	Operating weight	Ground pressure
Triple grouser	600 mm	35 100 kg	66 kPa (0.67 kgf/cm <sup>2</sup> )
	700 mm	35 700 kg	57 kPa (0.59 kgf/cm <sup>2</sup> )
	800 mm	36 100 kg	51 kPa (0.52 kgf/cm <sup>2</sup> )

Basic Machine Weight and Overall width	
Excluding front end attachment, additional counterweight, fuel, hydraulic oil and coolant etc. Including counterweight.	

Shoe width	ZX330LC-5G H18		ZX330LC-5G H22	
	Weight	Overall width	Weight	Overall width
600 mm	25 800 kg	3 190 mm	29 300 kg	3 190 mm
700 mm	26 400 kg	3 290 mm	29 900 kg	3 290 mm
800 mm	26 800 kg	3 390 mm	30 300 kg	3 390 mm

BUCKET SPECIFICATIONS AND COMPATIBILITY					
	Capacity ISO heaped	Width Without side cutters	Weight	Recommendation	
				ZX330LC-5G	
Backhoe	0.40 m³	770 mm	300 kg		◎
	0.52 m³	910 mm	480 kg	◎	
Slope finishing	-	1 500 mm	360 kg	◇	◇
Max.weight				1 420 kg	1 020 kg

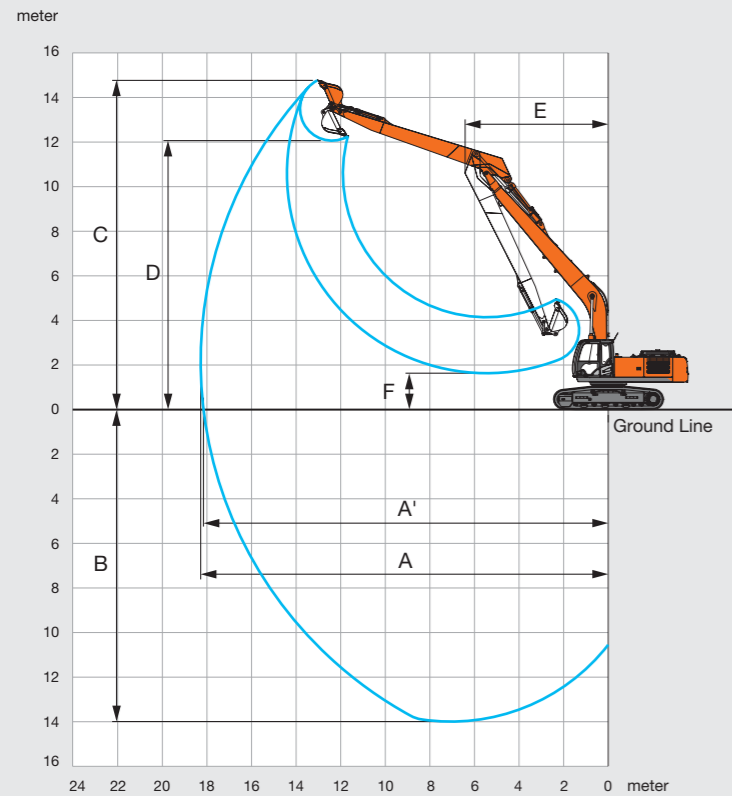
◎ Suitable for materials with density of 1 800 kg/m³ or less  
◇ Slope-finishing service



# SPECIFICATIONS

## ZX330LC-5G TYPE H18 SUPER LONG FRONT

### WORKING RANGES



Unit: mm

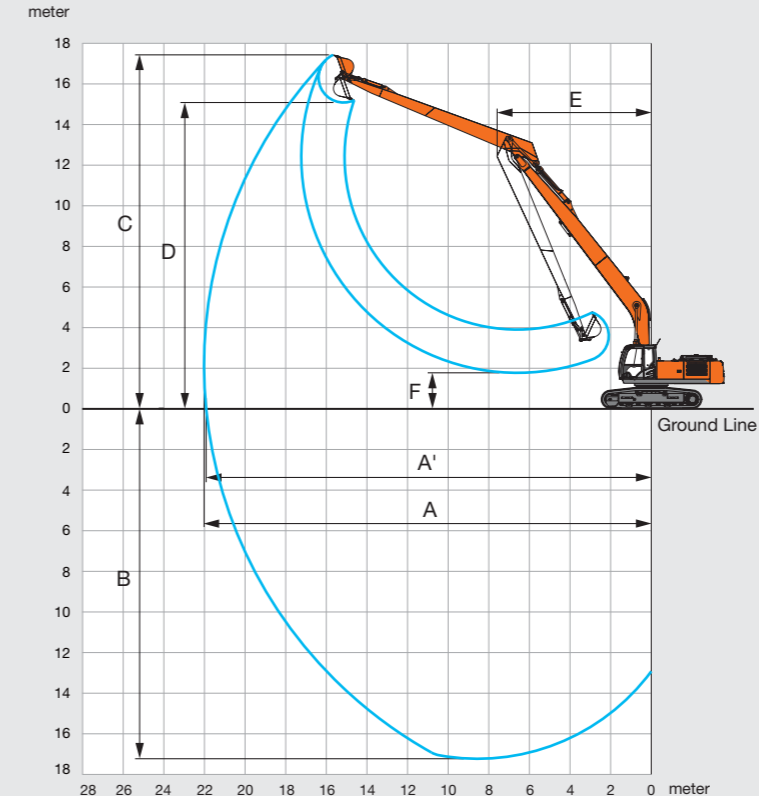
	ZX330LC-5G TYPE H18
A Max. digging reach	18 280
A' Max. digging reach (on ground)	18 160
B Max. digging depth	14 030
C Max. cutting height	15 730
D Max. dumping height	12 030
E Min. swing radius	6 430
F Min. dumping height	1 600
Bucket digging force ISO	95 kN (9 700 kgf)
Bucket digging force SAE:PCSA	84 kN (8 600 kgf)
Arm crowd force ISO	71 kN (7 300 kgf)
Arm crowd force SAE:PCSA	70 kN (7 100 kgf)

•Excluding track shoe lug

# SPECIFICATIONS

## ZX330LC-5G TYPE H22 SUPER LONG FRONT

### WORKING RANGES

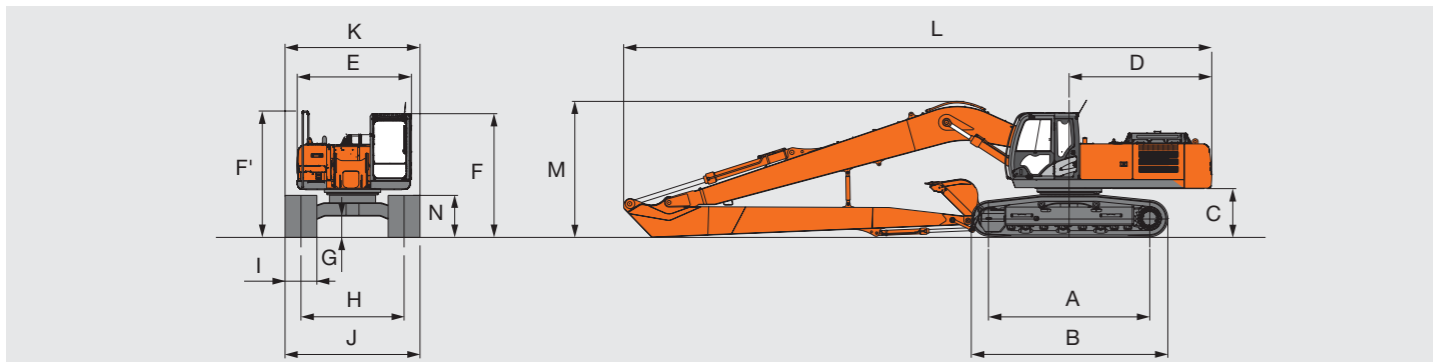


Unit: mm

	ZX330LC-5G TYPE H22
A Max. digging reach	22 020
A' Max. digging reach (on ground)	21 920
B Max. digging depth	17 260
C Max. cutting height	17 400
D Max. dumping height	15 050
E Min. swing radius	7 600
F Min. dumping height	1 740
Bucket digging force ISO	84 kN (8 500 kgf)
Bucket digging force SAE:PCSA	73 kN (7 400 kgf)
Arm crowd force ISO	59 kN (6 000 kgf)
Arm crowd force SAE:PCSA	58 kN (5 900 kgf)

•Excluding track shoe lug

### DIMENSIONS

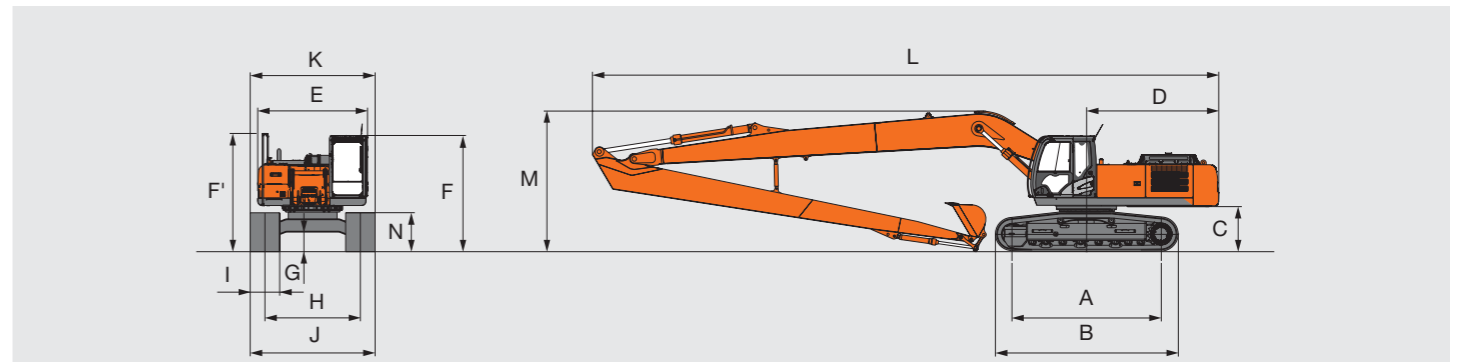


Unit: mm

	ZX330LC-5G TYPE H18
A Distance between tumblers	4 050
B Undercarriage length	4 950
* C Counterweight clearance	1 130
D Rear-end swing radius	3 590
E Overall width of upperstructure	2 990
F Overall height of cab	3 170
F' Overall height of upperstructure	3 270
* G Min. ground clearance	500
H Track gauge	2 590
I Track shoe width	G 600 / G 700 / G 800
J Undercarriage width	3 190 / 3 290 / 3 390
K Overall width	3 190 / 3 290 / 3 390
L Overall length	14 770
M Overall height	3 420
N Track height with triple grouser shoes	1 060

\* Excluding track shoe lug

### DIMENSIONS



Unit: mm

	ZX330LC-5G TYPE H22
A Distance between tumblers	4 050
B Undercarriage length	4 950
* C Counterweight clearance	1 130
D Rear-end swing radius	3 690
E Overall width of upperstructure	2 990
F Overall height of cab	3 170
F' Overall height of upperstructure	3 270
* G Min. ground clearance	500
H Track gauge	2 590
I Track shoe width	G 600 / G 700 / G 800
J Undercarriage width	3 190 / 3 290 / 3 390
K Overall width	3 190 / 3 290 / 3 390
L Overall length	16 990
M Overall height	3 820
N Track height with triple grouser shoes	1 060

\* Excluding track shoe lug



# EQUIPMENT

## ZX330LC-5G TYPE H18 / H22 SUPER LONG FRONT

Standard and optional equipment may vary by country, so please consult your Hitachi dealer for details.

● : Standard equipment

○ : Optional equipment

ENGINE	CAB	MONITOR SYSTEM	UNDERCARRIAGE
Air cleaner double filters ●	All-weather sound suppressed steel cab ●	Alarm buzzers: overheat, engine oil pressure, overload ●	Bolt-on sprocket ●
Auto idle system ●	AM-FM radio with 2 speakers ●	Alarms: overheat, engine warning, engine oil pressure, alternator, minimum fuel level, hydraulic filter restriction, air filter restriction, work mode, overload, etc ●	Reinforced track links with pin seals ●
Cartridge-type engine oil filter ●	Ashtray ●	Display of meters: water temperature, hour, fuel rate, clock ●	Travel motor covers ●
Cartridge-type fuel pre-filter ●	Auto control air conditioner ●	Other displays: work mode, auto-idle, glow, operating conditions, etc ●	Travel parking brake ●
Cartridge-type fuel main filter ●	AUX. terminal and storage ○	32 languages selection ●	9.0 mm reinforced track undercover ○
Dry-type air filter with evacuator valve (with air filter restriction indicator) ●	Cab (Center pillar reinforced structure) ●		Track guard (each side) and hydraulic track adjuster ●
ECO/PWR mode control ●	Drink holder (rear side) ●		Upper and lower rollers ●
Engine warm-up device ●	Drink holder with hot & cool (front side) ●		3 track guards ●
Fan guard ●	Electric double horn ●		4 tie down hooks ●
Water separator ●	Engine shut-off lever ●		600 mm triple grouser shoes ●
Pre-cleaner ○	Evacuation hammer ●		700 / 800 mm triple grouser shoes ○
Dust-Proof indoor net ●	Fire extinguisher bracket ○		
Radiator reserve tank ●	Floor mat ●	<b>LIGHTS</b>	<b>FRONT ATTACHMENTS</b>
50 A alternator ●	Footrest ●	Additional cab roof front lights ○	Centralized lubrication system ●
	Front window washer ●	Additional boom light with cover ○	Flanged pin ●
	Front windows on upper, lower and left side can be opened ●	2 working lights ●	HN bushing ●
	Lower cab front guard ○		0.52 m <sup>3</sup> bucket (ISO heaped) (H18) ●
	Upper cab front guard ○	<b>UPPER STRUCTURE</b>	0.40 m <sup>3</sup> bucket (ISO heaped) (H18) ○
<b>HYDRAULIC SYSTEM</b>	Glove compartment ●	Electric fuel refilling pump ○	0.40 m <sup>3</sup> bucket (ISO heaped) (H22) ●
Auto power lift ●	Hot & cool box ●	Fuel level float ●	7.52 m arm (H18) ●
Control valve with main relief valve ●	Intermittent windshield wipers ●	Hydraulic oil level gauge ●	9.40 m arm (H22) ●
Full-flow filter ●	Key cylinder light ●	Rear view camera ○	9.95 m boom (H18) ●
High mesh full flow filter with restriction indicator ○	LED room light with door courtesy ●	Rear view mirror (right & left side) ●	12.1 m boom (H22) ●
Pilot filter ●	OPG top guard Level I (ISO10262) compliant cab ●	Swing parking brake ●	
Pilot filter ●	Pilot control shut-off lever ●	Tool box ●	<b>MISCELLANEOUS</b>
Power boost ●	Rear tray ●	Undercover ●	Lockable fuel refilling cap ●
Suction filter ●	Retractable seat belt ●	Utility space ●	Lockable machine covers ●
One extra port for control valve ●	Rubber radio antenna ●	7 600 kg counterweight (H18) ●	Onboard information controller ●
Work mode selector ●	Seat : Fabric seat ●	9 600 kg counterweight (H22) ●	Skid-resistant tapes, plates and handrails ●
	Seat : mechanical suspension seat ○	2 x 128 Ah batteries ●	Standard tool kit ●
	Seat : air suspension seat with heater ○		Travel direction mark on track frame ●
	Seat adjustment part : backrest, armrest, height and angle, slide forward / back ●		Global e-Service ●
	Short wrist control levers ●		
	4 fluid-filled elastic mounts ●		
	24V cigarette lighter ●		

Before using a machine with a satellite communication system, please make sure that the satellite communication system complies with local regulations, safety standards and legal requirements. If not so, please make modifications accordingly.

These specifications are subject to change without notice.

Illustrations and photos show the standard models, and may or may not include optional equipment, accessories, and all standard equipment with some differences in color and features.

Before use, read and understand the Operator's Manual for proper operation.