

**HITACHI**

Reliable Solutions

# Hitachi excavator buckets

---

Fit the best  
attachment for  
your application





# A perfect fit for your Hitachi excavator

The bucket of your Hitachi excavator is essential to its performance. Designed to work in harmony with your machine, Hitachi attachments are manufactured to the highest quality and deliver exceptional reliability to maximise productivity and uptime. This means increased profitability for your business and peace of mind that you're getting the most from your Hitachi machine.

# Demand the right tool for the job

You need versatility from your Hitachi excavator and your choice of bucket has a role to play. As different jobs require different attachments, Hitachi has a range of buckets that can be customised to meet your needs and to suit various operating conditions.



## A bucket for every job site

Whatever you need to load and wherever the job site, Hitachi can offer you the ideal attachment for your excavator. Manufactured by carefully selected leading European suppliers with decades of industry experience, its range of buckets offer the same high standards of reliability and durability that you'd expect from Hitachi construction equipment.

## No compromise on quality

Hitachi excavators can work in demanding and uncompromising environments, and they need buckets with the capabilities to match. The Hitachi range is produced by experienced design engineers and highly skilled welders, working both manually and with the most advanced robotic welders in the market, using only the highest quality materials to ensure the highest possible quality and durability.



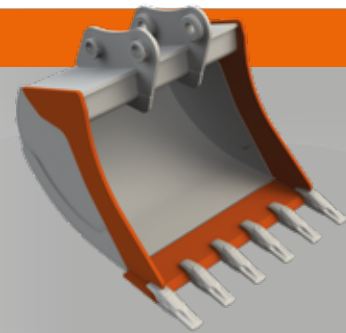


# Choose your bucket

Hitachi offers a wide range of buckets for mini excavators up to mining machines. Suitable for loading light materials, heavy-duty work in mines and quarries, and everything in between, they can be customised to suit a variety of applications and meet the needs of your business.

## Excavating

This universal bucket can be designed for many applications with various options, such as front knife, teeth, protective plates, different quick coupler or pin-on systems. It is available as standard, GD, HD, SD and SXD variations.



## Ditch cleaning

A wide bucket with a large opening offers exceptional versatility, with good penetration and easy filling of the material. It is available in different widths, volumes, with various quick coupler systems and several options. Available as SD and HD with bolt-on or weld-on profile edges.



## Tiltable ditch cleaning

Two protected hydraulic cylinders tilt this bucket, enabling grading and levelling to be completed at an angle. Choose from different widths, capacities and various coupler systems.



## Tiltrotator

Specially designed to work with a tiltrotator, this bucket type delivers a strong digging and levelling performance at any angle. The cut-back corners allow the bucket to rotate freely. Manufactured from high-quality materials, it is lightweight and durable.



## Rock/heavy duty

Ideal for use in extremely tough working conditions such as mining and quarrying, this bucket can be custom-made with various designs available and several options to choose from.



# A solution for all job sites

## Strong connection

Hitachi buckets can be connected in various ways, using the standard pin-on connection, as well as CW, pin grabber and S-type couplers, depending on your requirements.

## Extensive selection

A wide variety of options are available in different dimensions, volumes and shapes, and all are guaranteed to be of the highest quality.



## Longer lifetime

Hitachi offers various wear package options for side edges, the bottom plate and other parts of the bucket that may require added protection. This ensures a longer lifetime for your Hitachi bucket.

## Optimal performance

To enhance performance, Hitachi buckets can be fitted with ground engaging tools (GET) including cutting edges, lip and wing shrouds, teeth and adapters. A broad line-up is available to meet the demands of different materials and working conditions.



# HITACHI

## Reliable Solutions

To find out more about buckets  
for Hitachi excavators, please  
contact your local dealer or visit  
[www.hitachicm.eu](http://www.hitachicm.eu)



© Hitachi Construction Machinery (Europe) NV (HCME).  
All rights reserved. Reproduction in whole or in part is  
forbidden except with the written permission of HCME.  
While every effort is made to ensure the accuracy of  
information published, HCME is not responsible for  
inaccuracies or omissions. All views expressed are not  
necessarily those of HCME.

Hitachi Construction Machinery (Europe) NV  
Siciliëweg 5 – haven 5112, 1045 AT Amsterdam  
PO Box 59239, 1040 KE Amsterdam, The Netherlands  
T: +31-(0)20 44 76 700 F: +31-(0)20 33 44 045  
[www.hitachicm.eu](http://www.hitachicm.eu)

KP-EN025EU