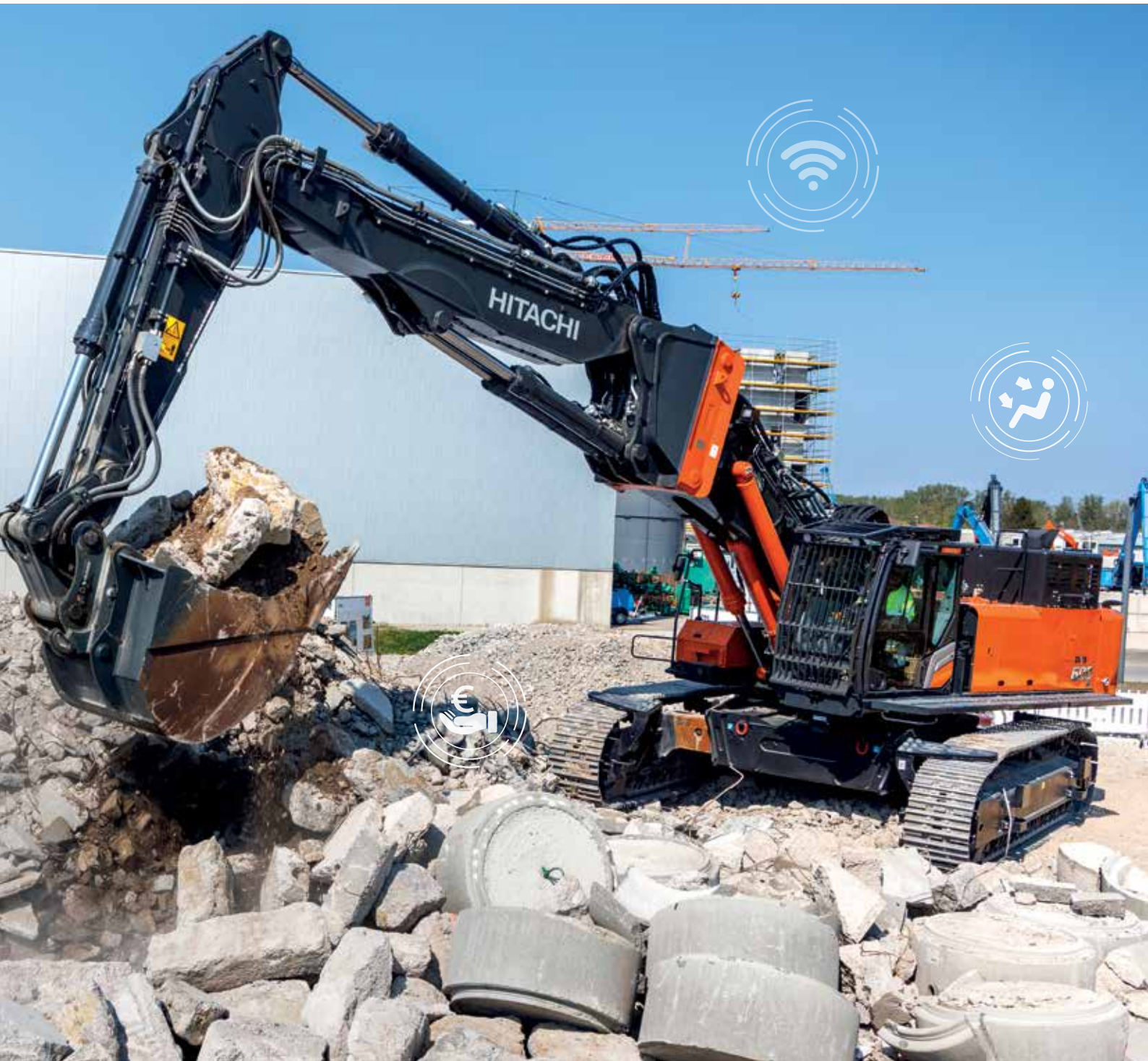


ZAXIS-7 series

HITACHI

Reliable Solutions

# ZAXIS390TC/400MC/600MC



## HYDRAULIC EXCAVATORS

Model code : ZX390TC-7

Engine rated power : 210 kW

Operating weight : 38 900 – 39 200 kg

(with quick coupler OQ80)

Bucket ISO heaped : up to 2.5 m<sup>3</sup>

Model code : ZX400MC-7

Engine rated power : 210 kW

Operating weight : 48 800 – 56 100 kg

(plus tool weight/quick coupler)

Bucket ISO heaped : up to 2.5 m<sup>3</sup>

Model code : ZX600MC-7

Engine rated power : 296 kW

Operating weight : 72 000 – 80 700 kg

(plus tool weight/quick coupler)

Bucket ISO heaped : up to 3.0 m<sup>3</sup>

# You're in control

The new range of multi-carrier and tool-carrier machines from Hitachi will maximise efficiency, uptime and safety on your demolition projects. Based on Hitachi standard excavators, with Zaxis-7 technology and Stage V-compliant engines, the special application models have been developed exclusively with KTEG (Kenki Technology Group GmbH), a joint venture between Hitachi Construction Machinery Co., Ltd and Kiesel Technologie Entwicklung GmbH.

To continuously improve our machine line-up, we've focused on enhancing your experience in the cab as an operator. We've also considered the challenges you face as the owner of a successful business. By putting you at the heart of the Zaxis-7 range, we invite you to take control – over your workspace and your fleet.



## Inside



In control of your business

**10.** Improve your profit



In control of your environment

**12.** Increase your safety



In control of your assets

**14.** Boost your uptime



In control of your fleet

**17.** Manage your machine



In control of your uptime

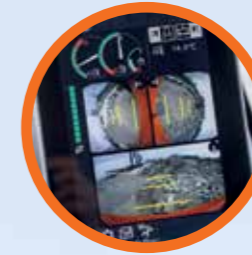
**19.** Protect your investment

# ZX390TC-7

The ZX390TC-7 tool carrier model has been specially adapted to work with larger secondary demolition attachments. It has been designed to meet the growing demand for 40-tonne class machines, capable of boosting productivity and efficiency on site.



Integrated console and seat suspension gives a greater sense of control, and helps to reduce fatigue.



Visibility of the job site is excellent thanks to the Aerial Angle camera system and LCD monitor.



ConSite Pocket app allows you to manage and monitor your fleet remotely.



Quick coupler and full hydraulic control system, suitable for use with all attachments, enhance versatility and efficiency.



Large boom and bucket cylinders, and reinforced linkage, enable the use of five-tonne tools.



Added stability is provided by a longer undercarriage than standard and an additional counterweight.



Operator safety is enhanced by side impact protection and the demolition-spec cab.



Sensors monitor oil continuously and contribute to preventative maintenance, helping to reduce downtime.

# ZX400MC-7

Built to meet the requirements of all demolition projects, the ZX400MC-7 is supplied with up to four front attachments, including a monoboom, two-piece boom, and high-reach demolition front of 21m or 24m. It can complete the tasks of several machines on site, which simplifies planning, and minimises costs for transport and personnel.



The upper structure has side protection and a reinforced underside for additional robustness.



Excellent visibility thanks to the tilting cab (to an angle of 30 degrees).



The boom and attachment can be changed quickly and conveniently thanks to Boom Quick Connect and Tool Quick Connect technology.



ConSite Pocket app allows you to manage and monitor your fleet remotely.



Additional counterweight provides added stability.



Bucket cylinder protection designed for challenging working conditions.



The triple boom cylinder enhances versatility.



Sensors monitor oil continuously and contribute to preventative maintenance, helping to reduce downtime.

# ZX600MC-7

Designed for safe and efficient demolition, the ZX600MC-7 is supplied with several front attachments, including a monoboom, two-piece boom, a high-reach demolition front of 26m or 30m, and a telescopic boom enabling a high reach of 34m. It reduces the number of machines required on site, saving time and money for owners, and improves performance and safety for operators.



The boom and attachment can be changed quickly and conveniently thanks to Boom Quick Connect and Tool Quick Connect technology.



Excellent visibility thanks to the tilting cab (to an angle of 30 degrees).



Especially reinforced demolition cab keeps operators safe.



Third valve-controlled boom cylinder allows for up to 50% greater lifting capacity.



Hydraulic extendable undercarriage extends for stability and retracts for easy transport.



The upper structure has side protection and a reinforced underside for additional robustness.



ConSite Pocket app allows you to manage and monitor your fleet remotely.



Sensors monitor oil continuously and contribute to preventative maintenance, helping to reduce downtime.



# Improve your profit

The profitability of your demolition project depends on the reliability and efficiency of your equipment. With the new range of Hitachi Zaxis-7 tool- and multi-carrier excavators, you can count on the highest quality, guaranteed maximum uptime in challenging working environments and reduced total cost of ownership – all of which have a positive impact on your bottom line.

You can boost your profits by completing several tasks with one machine, minimising transport and personnel costs. Different attachments are changed within seconds from the operator's seat using the full hydraulic control system.

## ZX390TC-7

The ZX390TC-7 has been specially adapted with larger boom and bucket cylinders, and a reinforced linkage (one class higher than similar sized models) to work with larger secondary demolition attachments. It can carry five-tonne tools, such as hydraulic shears for crushing, that would normally be used by larger machines.

## ZX400MC-7 and ZX600MC-7

Both the boom and attachment on the ZX400MC-7 and ZX600MC-7 multi-carrier models can be changed quickly and conveniently from the cab thanks to patented Boom Quick Connect and Tool Quick Connect technology. This award-winning feature allows the front equipment to be changed within two minutes by one person (instead of 90 minutes and two people for a conventional type of boom-change system), saving time on the job site.

Having the flexibility to choose between booms enables operators to work with the optimum attachment for the job. This ensures the most efficient use of the machine when working at different heights.

Ownership costs are reduced because booms and front equipment are downwards compatible and exchangeable by machine class. Previous booms can be installed to new base machines, and front equipment can be rented when required.



Impressive fuel economy is achieved by unique TRIAS III (ZX390TC-7 and ZX400MC-7) and HIOS V (ZX600MC-7) hydraulics systems.



Larger boom and bucket cylinders on the ZX390TC-7 enable it to work with heavier tools.



The triple boom cylinder enhances the versatility of the ZX400MC-7 and ZX600MC-7.



The boom can be changed quickly from the cab using Boom Quick Connect technology.



erialAngle®

In control of your comfort



# Increase your safety

Your ability to work safely is vital, not only for your own wellbeing, but also for the successful completion of any project. Hitachi Zaxis-7 excavators give you a superior view of your surroundings, so you can see the job site from all angles.

This visibility includes multiple views from camera systems, including of the attachment, side and rear of the machine, and a 270-degree view of the surrounding environment. An optional arm-end camera for easy tool operation is also available.

The reinforced demolition-spec cab of the ZX390TC-7, ZX400MC-7 and ZX600MC-7 has FOPS guard level 2 and front window protection, as well as high-spec P5A safety glass, to provide additional protection from falling debris.

#### ZX390TC-7

Offering superb stability, the ZX390TC-7 has a robust 25 cm longer undercarriage than the standard ZX350LC-7 base model, and is supplied with an additional 1.4-tonne counterweight.

#### ZX400MC-7 and ZX600MC-7

A load moment indicator and alarm system, as well as an extendable undercarriage and additional counterweight, ensure a safe working experience. Thanks to Boom Quick Connect technology, front equipment can be changed from the cab. Only one operator and one excavator are required on site, further boosting safety.

You're in control in the safe demolition-spec cab.



Tilting cab of the ZX400MC-7 and ZX600MC-7 gives excellent visibility.



An alarm indicates if the permitted working range is exceeded (the tool speed is then automatically reduced).



Camera systems give the operator multiple views of the job site.



The undercarriage of the ZX400MC-7 and ZX600MC-7 extends for stability.



Optional water spray minimises dust on demolition sites.



The ZX390TC-7 has bucket cylinder protection to enhance durability.



Easy-to-use stands for storing front equipment on the job site and transport.



Reinforced travel drive covers offer protection in tough working environments.



Exceptional durability and reliability maximise uptime.

In control of your assets



# Boost your uptime

Completing a project on time and on budget depends on the ability of your construction equipment to perform all day, every day. That's why Hitachi owners have profited from generations of ultra-reliable and durable machinery – and the Zaxis-7 special application range is no exception.

Based on Hitachi ZX350LC-7 and ZX490LC-7 standard excavators, these new models benefit from Zaxis-7 technology and Stage V-compliant engines. Developed exclusively with KTEG, they have been tested rigorously to deliver a reliable performance.

All main components and spare parts are supplied by Hitachi, renowned for its dedication to quality and reliability. All modifications to the standard Zaxis-7 models are approved by Hitachi's quality assurance team, and the new models are covered by Hitachi warranty and service programmes for peace of mind.

### ZX390TC-7

Uptime is maximised by the exceptional durability and reliability of the new models. The ZX390TC-7 centre frame and track frames have been redesigned and built from more durable material. In addition, it has thicker travel motor covers, bucket cylinder protection, and the connection of the counterweight to the upper structure main frame has been reinforced with a larger steel plate.

### ZX400MC-7 and ZX600MC-7

The upper structure has side protection and a reinforced underside for additional robustness. Both models have bucket cylinder protection and reinforced travel drive covers to protect them in challenging working conditions.





# Manage your machine

Hitachi offers a wide range of after-sales services to help you feel in total control of your fleet and workload. These initiatives give you access to vital data and tools to manage your machine.

Remote monitoring systems Owner's Site and ConSite send operational data daily via GPRS or satellite from your excavator to [www.globaleservice.com](http://www.globaleservice.com). This includes: ratios of operating hours to enhance efficiency; fuel consumption to manage running costs; and machine location for planning purposes. ConSite summarises the information in a monthly email.

The ConSite Pocket App sends you real-time alerts for issues arising with your machine. You'll receive recommendations on what to do and step-by-step help guides. The app also enables you to see the location of your fleet.

A unique innovation continuously monitors the quality of engine and hydraulic oil, 24/7. Data is transmitted daily via two oil sensors to Global e-Service. These detect if the oil quality has deteriorated, due to contamination or low viscosity. If this happens, you and your authorised Hitachi dealer will receive an alert.

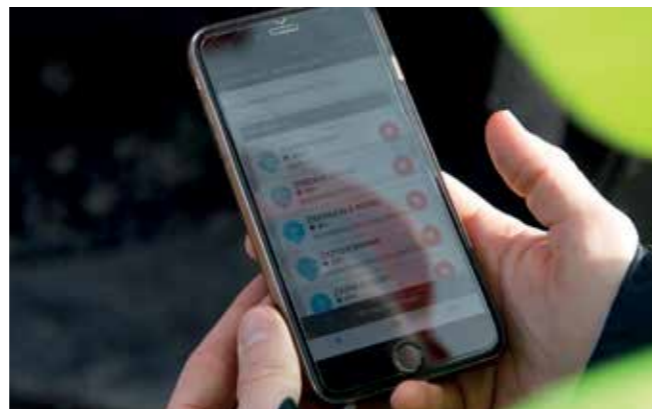
This innovative feature provides accurate estimations of when oil changes are required. It reduces maintenance and unscheduled downtime, and gives you peace of mind thanks to scheduled servicing and ultimately a higher resale value.



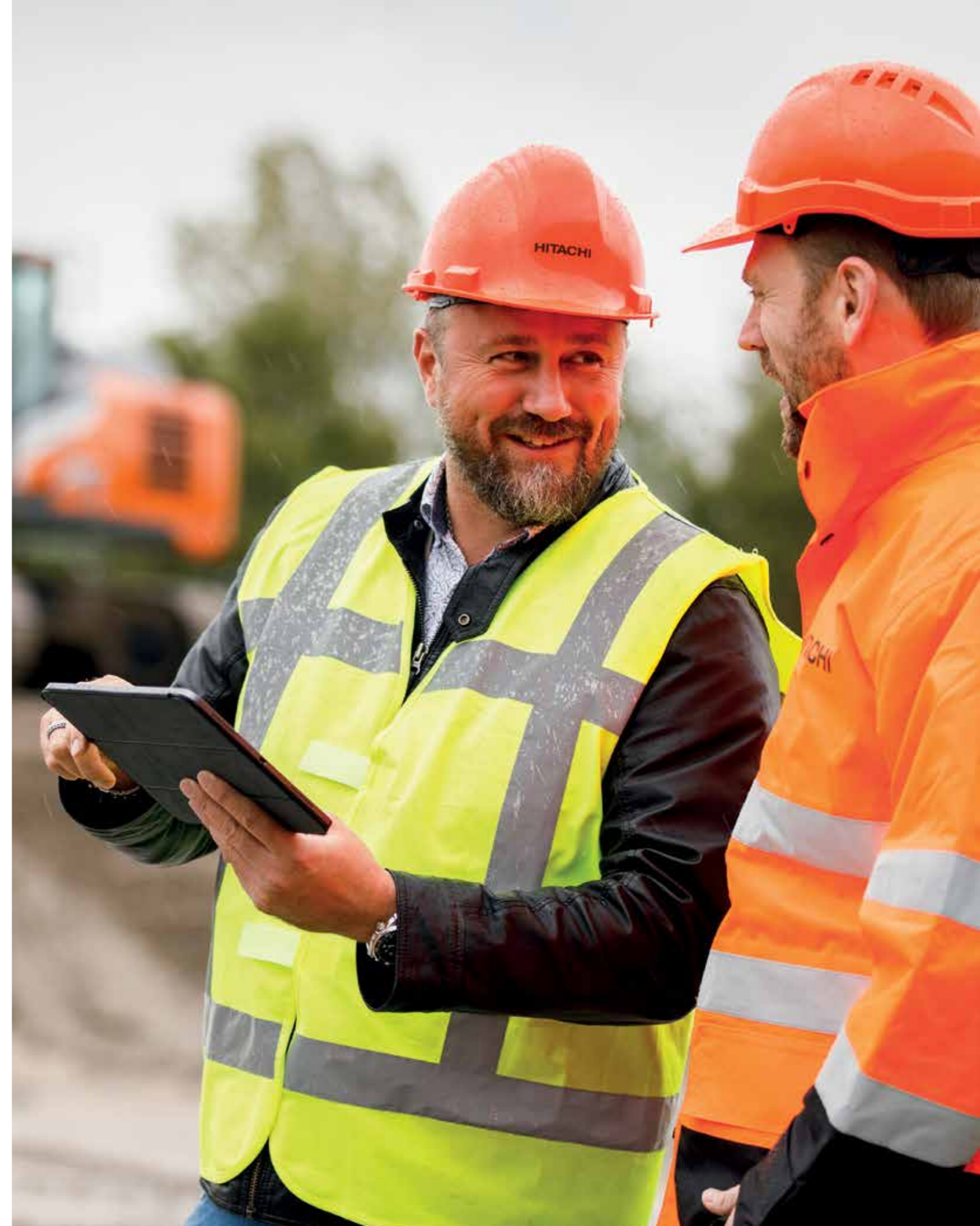
The unique oil sensor reduces maintenance and downtime.



A wide range of data on Global e-Service enhances efficiency.



The alerts on the ConSite Pocket App provide real-time information.



Hitachi offers a wide range of after-sales services for planning maintenance and managing running costs.



Minimise downtime with Hitachi Genuine Parts.



HELP extended warranties and service contracts provide optimal performance.



Hitachi Premium Rental enables you to pay as you earn.



Hitachi provides the highest level of technical support.

In control of your uptime



# Protect your investment

If your machine will be working in severe conditions, or you want to minimise repair costs, you can take advantage of a unique extended warranty programme called HELP (Hitachi Extended Life Program) and comprehensive service contracts. These can help to optimise performance, reduce downtime and ensure a higher resale value.

We apply the same technological expertise to our wide range of high-quality parts as we do our machines. As a result, you can minimise unscheduled downtime and ensure maximum availability.

The parts range includes Hitachi Genuine Parts, Performance Parts, filters, undercarriages, and remanufactured components. We also offer ground engaging tools and buckets, which have been manufactured to the same exacting standards.

As your business grows, you may need to extend your fleet to meet the demands of new contracts. Why not try before you buy with the Hitachi Premium Rental programme? This gives you immediate access to Zaxis-7 medium excavators for a period of one month to a year.

Along with the reliability, quality and service you would expect from the Hitachi brand, Hitachi Premium Rental offers flexible contracts and fixed costs that make it easier for you to budget.



Create your vision

# In control of your world

When you take delivery of a Hitachi machine, you become part of the latest generation of a global family. With a 50-year heritage in designing hydraulic excavators, and a reputation as the industry's leading mining machine manufacturer, the Hitachi network will give you access to a range of exceptional construction equipment.

Hitachi excavators, wheel loaders, rigid dump trucks and special application machines incorporate advanced technology and pioneering expertise. Made at state-of-the-art facilities, they are built to the highest standards. You'll also benefit from market-leading services and initiatives, such as Premium Rental and Premium Used, which have been created to enhance your experience as a Hitachi customer.

Whatever vision you wish to create, Hitachi has the product, people, solutions and services you need to make it become a reality – and empower you to take control of your world.



EH dump trucks and EX ultra-large excavators



Special application excavators



ZW wheel loaders



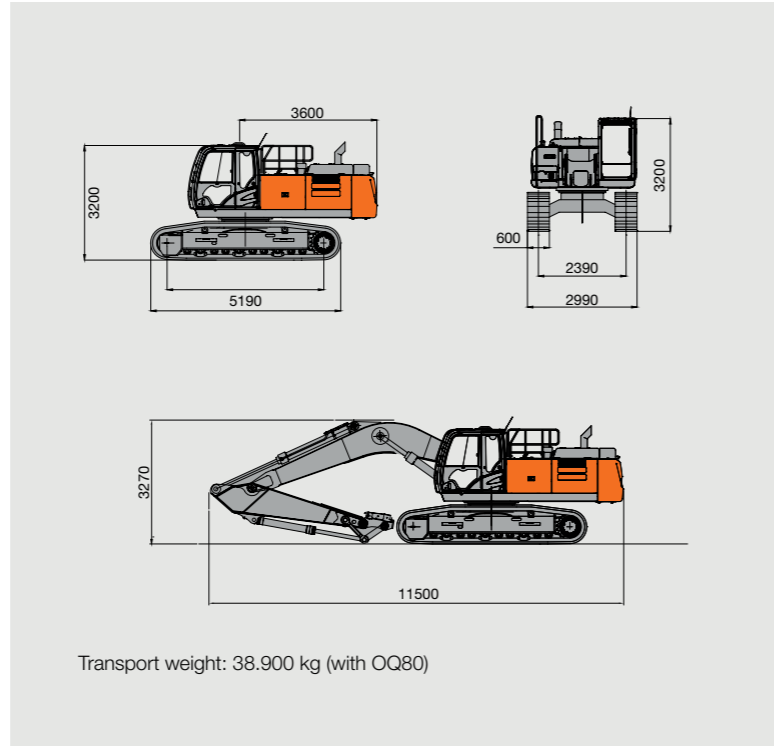
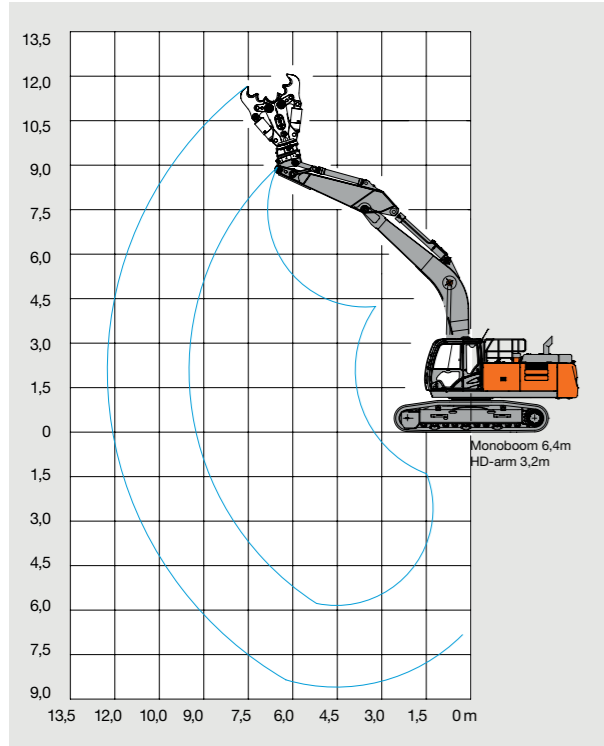
Mini excavators

# SPECIFICATIONS

## DIMENSIONS

### ZX390TC-7

Monoboom-Front – Maximum tool weight with quick coupler 5000 kg



## LIFTING CAPACITIES

Equipment: Monoboom 6,4m, HD Arm 3,2m, HD Boom cylinder, Counterweight 9,0t, 600mm Triple-grouser-shoes  
State: 20210812

Height (m)	3,0m		4,0m		5,0m		6,0m		7,0m		8,0m		9,0m		max. Reach		Metre	
	0°	360°	0°	360°	0°	360°	0°	360°	0°	360°	0°	360°	0°	360°	0°	360°		
6																		
5							12,0*	10,4	10,5*	8,4	10,0*	6,7			6,2*	5,9	8,6	
4							13,3*	10,0	11,9*	8,0	10,9*	6,5	8,8*	5,3	5,8*	5,0	9,3	
3				19,4*	18,3	15,5*	13,1	14,6*	9,6	12,7*	7,7	11,4*	6,3	9,6	5,3	6,6*	4,9	9,4
2				23,1*	17,0	17,6*	12,4	15,7*	9,2	13,5*	7,4	11,4	6,1	9,5	5,2	6,1*	4,7	9,5
1				13,8*	13,8*	19,4*	11,9	15,7*	9,2	13,5*	7,4	11,4	6,1	9,5	5,2	6,1*	4,7	9,5
0				12,9*	12,9*	20,5*	11,5	16,6*	8,9	13,8*	7,2	11,2	6,0	9,4	5,1	7,0*	4,7	9,4
1				15,3*	15,3*	21,0*	11,2	17,2*	8,7	13,6	7,1	11,1	5,9	9,3	5,0	7,9*	4,8	9,2
2	11,4*	11,4*	19,3*	15,4	21,0*	11,1	17,2*	8,6	13,5	7,0	11,0	5,8			8,9*	5,1	8,9	
3	16,4*	16,4*	24,7*	15,5	20,3*	11,1	16,9*	8,6	13,4	6,9	11,0	5,8			7,3*	5,3	8,6	
4	22,2*	22,2*	23,2*	15,6	19,1*	11,1	16,0*	8,6	13,4	7,0	9,5*	5,9			11,2*	6,0	7,9	
5	25,1*	25,1*	20,7*	15,8	17,2*	11,3	14,3*	8,7	11,6	7,1					10,9*	6,9	7,2	
6	20,3*	20,3*	17,0*	16,2	14,0*	11,6	11,1*	9,0							10,4*	8,6	6,2	

**Note:**  
The load capacities are given in tons (t). Pump pressure 380bar.  
According to ISO 10567, 75% of the static tipping load or 87% of the hydr. lifting force (marked by\*).  
The load point is the centerline of the dipper pin on the arm.

For lifting operation, pipe rupture safety devices on the boom and arm cylinders and an overload warning device are required in accordance with CE directives.

## ZX390TC-7 and ZX400MC-7 OVERVIEW

### Engine

Model	Isuzu 6HK1X
Type	4-cycle water-cooled, common rail direct injection
Aspiration	Variable geometry turbocharged, intercooled, cooled EGR
Aftertreatment	DOC+CSF+SCR system
No. of cylinders rated power	6
ISO 14396 : 2002	210 kW at 1 900 min-1
ISO 9249 : 2007	202 kW at 1 900 min-1
Maximum torque	1 080 Nm at 1 500 min-1
Piston displacement	7.790 L
Bore and stroke	115 mm x 125 mm
Batteries	2 x 12 V / 135 Ah

### Hydraulic system

Hydraulic Pumps	
Main pumps	3 variable displacement axial piston pumps
Maximum oil flow	2 x 288 l/min + 1 x 260 l/min
Pilot pump	1 gear pump
Maximum oil flow	36.8 l/min
Hydraulic Motors	
Travel	2 variable displacement axial piston motors
Swing	1 axial piston motor
Relief Valve Settings	
Implement circuit	34.3 MPa
Swing circuit	32.4 MPa
Travel circuit	34.3 MPa
Pilot circuit	3.9 MPa
Power boost	38.0 MPa

### Hydraulic cylinders

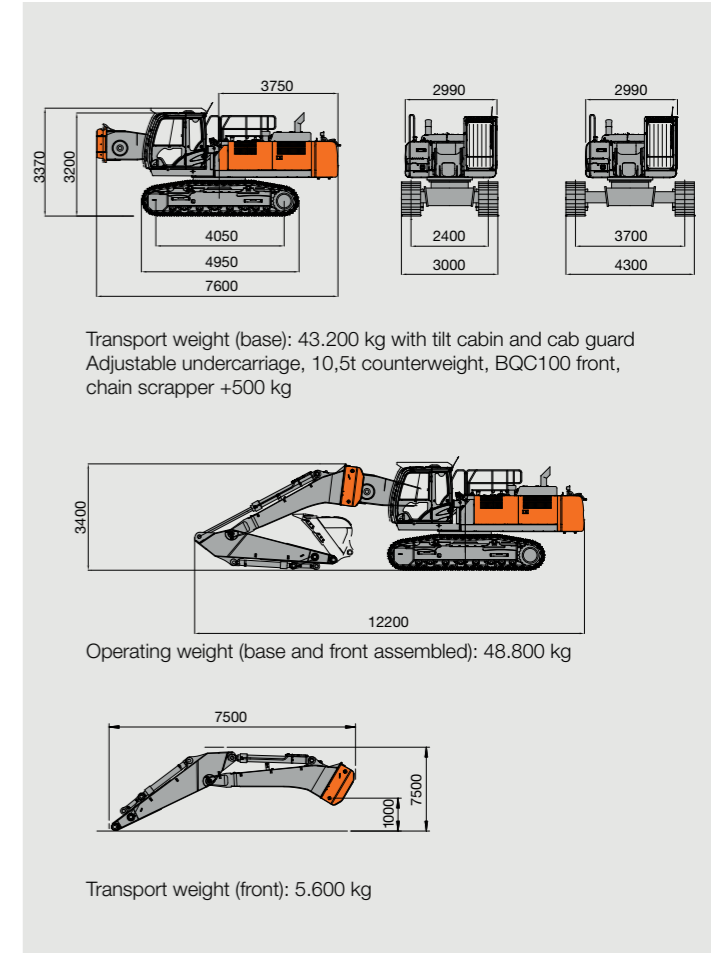
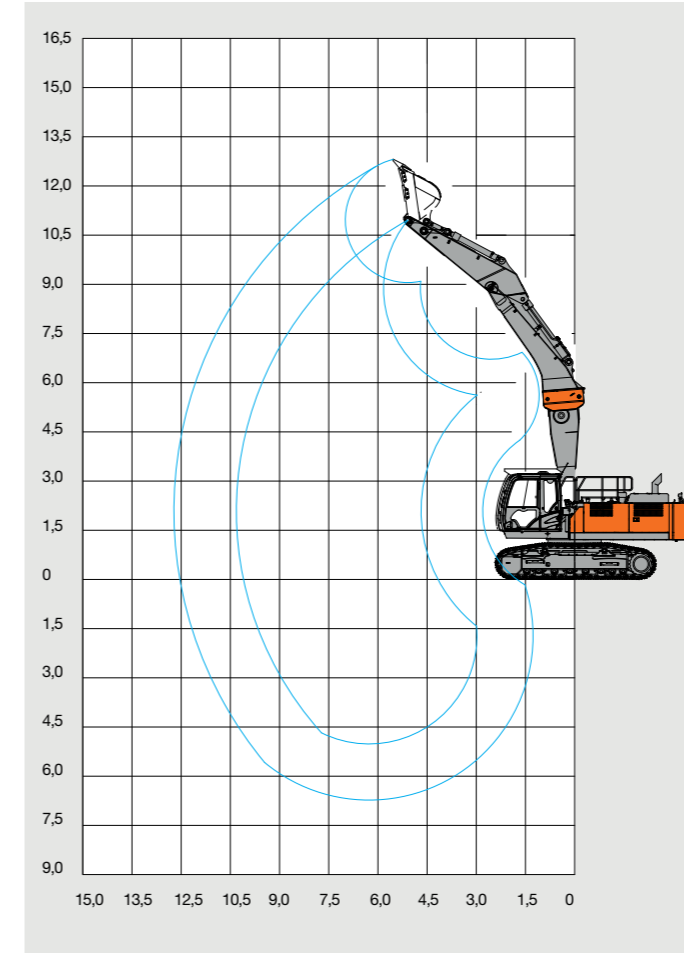
ZX390TC-7			
	Quantity	Bore	Rod diameter
Boom	2	160	110
Arm	1	170	115
Bucket	1	155	100

ZX400MC-7			
	Quantity	Bore	Rod diameter
Base Boom	3	145	100
Arm (for Mono & 2PB)	1	170	115
Bucket (for Mono & 2PB)	1	140	95
Bucket (Stronger Version)	1	155	100
Positioning for 2PB	2	160	110
Mid-Dipper HR21m & HR24m	1	200	140
Arm HR21m & HR24m	1	190	130
Bucket HR21m	1	140	95
Bucket HR24m	1	130	90

## DIMENSIONS

### ZX400MC-7

Monoboom-Front



## LIFTING CAPACITIES

Equipment: Monoboom, 3,2m Arm, Counterweight 10,5t, 600mm Triple-grouser-shoes, UC narrow  
State: 20210810

Height (m)	4,5m		6,0m		7,5m		9,0m		max. Reach		Metre
	0°	360°	0°	360°	0°	360°	0°	360°	0°	360°	
9.0			11,3*	11,3*	6,4*	6,4*			6,4*	6,4*	7.5
7.5			12,5*	12,5*	11,2*	8,8			5,6*	5,6*	8.7
6.0	16,8*	16,8*	15,4*	12,3	13,5*	8,5	9,4*	6,2	5,3*	5,3*	9.5
4.5	23,3*	17,5	17,4*	11,2	14,3*	8,0	10,8	5,8	5,2*	4,7	10.0
3.0			19,1*	10,1	13,9	7,3	10,4	5,5	6,1*	4,4	10.2
1.5			18,5	9,1	13,2	6,8	10,1	5,2	6,8*	4,2	10.2
0.0	12,8*	12,6	17,8	8,6	12,8	6,4	9,8	5,0	7,4*	4,2	10.0
-1.5	19,0*	12,6	17,6	8,4	12,6	6,2	9,7	4,8	7,6*	4,5	9.6
-3.0	21,0*	12,8	17,1*	8,4	12,6	6,2	6,0*	5,0	6,0*	5,0	9.0
-4.5	16,3*	13,3*	13,5*	8,7	10,0*	6,5			9,0*	6,2	7.8

**Note:**  
The load capacities are given in tons (t). Pump pressure 380bar.  
According to ISO 10567, 75% of the static tipping load or 87% of the hydr. lifting force (marked by\*).  
The load point is the centerline of the dipper pin on the arm. For lifting operation, pipe rupture safety devices on the boom and arm cylinders and an overload warning device are required in accordance with CE directives.

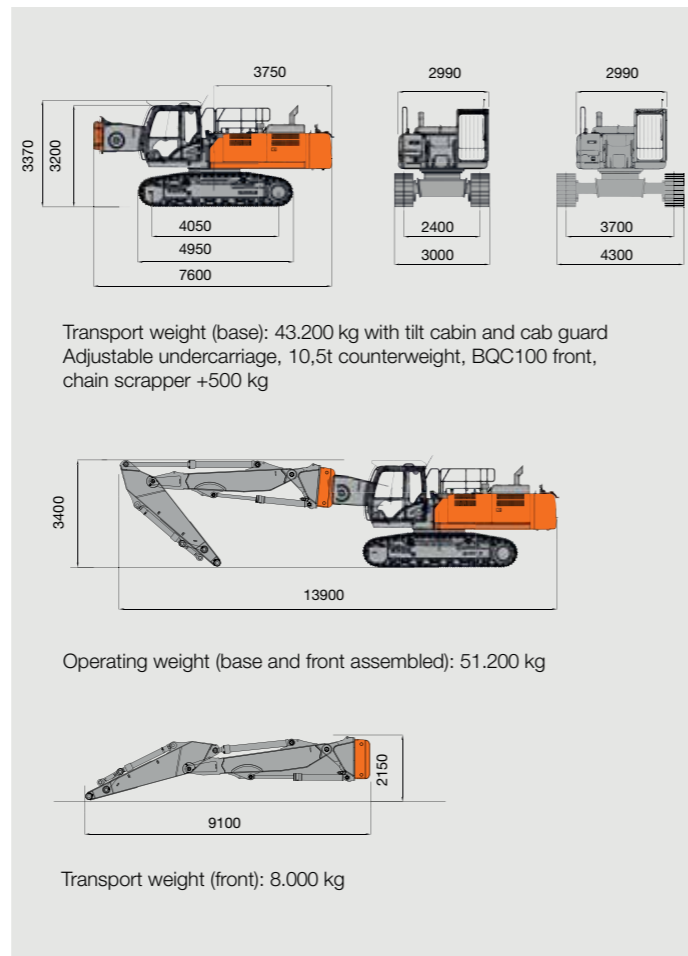
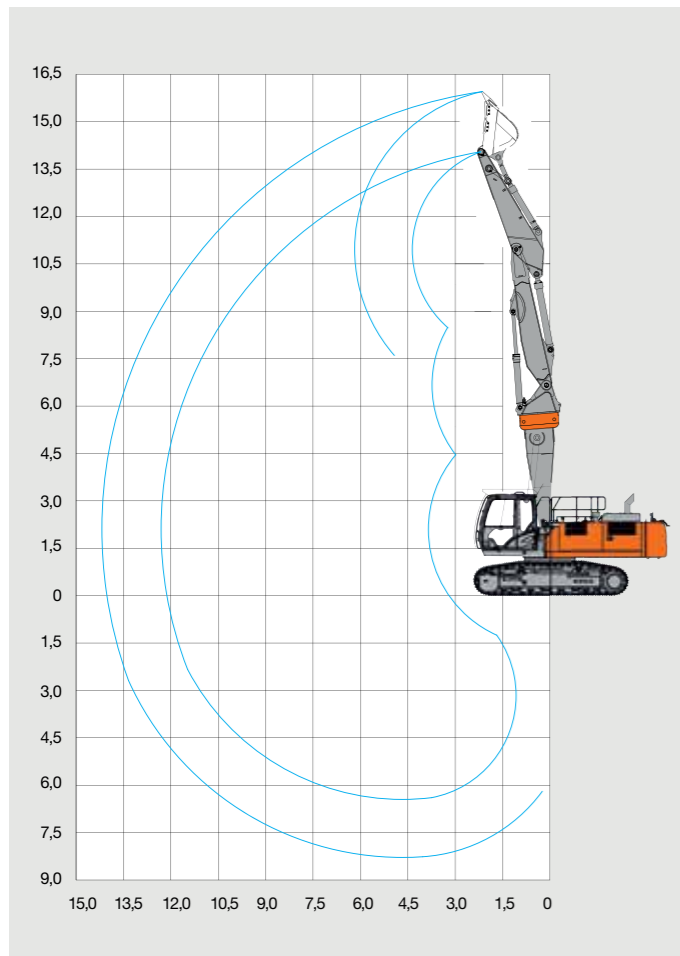
Equipment: Monoboom, 3,2m Arm, Counterweight 10,5t, 600mm Triple-grouser shoes, UC wide  
State: 20210810

Height (m)	4,5m		6,0m		7,5m		9,0m		max. Reach		Metre
	0°	360°	0°	360°	0°	360°	0°	360°	0°	360°	
9.0			11,3*	11,3*	6,4*	6,4*			6,4*	6,4*	7.5
7.5			12,5*	12,5*	11,2*	11,2*			5,6*	5,6*	8.7
6.0	16,8*	16,8*	15,4*	15,4*	13,5*	13,5*	9,4*	9,4*	5,3*	5,3*	9.5
4.5	23,3*	23,3*	17,4*	17,4*	14,3*	13,0	10,8	9,6	5,2*	5,2*	10.0
3.0			19,1*	17,3	13,9	12,3	10,4	9,3	6,1*	6,1*	10.2
1.5			18,5	16,2	13,2	11,7	10,1	8,9	6,8*	6,8*	10.2
0.0	12,8*	12,8*	17,8	15,6	12,8	11,3	9,8	8,7	7,4*	7,4*	10.0
-1.5	19,0*	19,0*	17,6	15,3	12,6	11,1	9,7	8,6	7,6*	7,6*	9.6
-3.0	21,0*	21,0*	17,1*	15,4	12,6	11,1	6,0*	6,0*	6,0*	6,0*	9.0
-4.5	16,3*	16,3*	13,5*	13,5*	10,0*	10,0*			9,0*	9,0*	7.8

# SPECIFICATIONS

## DIMENSIONS

### ZX400MC-7 2-piece demolition boom



## LIFTING CAPACITIES

Equipment: 2-Piece Demolition Boom, 3,2m Arm,  
Counterweight 10,5t, 600mm Triple-grouser shoes,  
UC narrow  
State: 20220421

Height (m)	4,5m		6,0m		7,5m		9,0m		10,5m		12,0m		max. Reach		
	0°	360°	0°	360°	0°	360°	0°	360°	0°	360°	0°	360°	0°	360°	Metre
12.0	12,6*	12,6*	12,1*	12,1*									5,8*	5,8*	7.1
10.5	10,9*	10,9*	11,6*	11,6*	11,6*	8,2							6,3*	5,5	8.9
9.0	10,3*	10,3*	11,4*	11,4*	12,0*	9,2	10,7	5,6					6,5*	4,2	10.1
7.5	14,1*	14,1*	13,7*	11,2	13,5*	8,9	10,5	6,2	7,8	3,7			6,0*	3,3	11.0
6.0	19,4*	18,3	17,4*	11,8	13,6	9,0	10,5*	5,9	7,6	3,6			6,3	2,8	11.6
4.5	15,1	15,1*	16,2*	11,9*	12,9*	8,3	10,5	5,8	8,0	3,9	4,3*	2,4	4,3*	2,4	12.0
3.0	19,9*	15,3	17,5*	10,5	13,1	7,5	9,9	5,4	7,7	3,6	5,7	2,3	4,5*	2,2	12.2
1.5	23,4*	12,8	16,6	9,1	12,8	6,4	10,5	5	7,4	3,3	5,6	2,2	5,2*	2,2	12.2
0.0	24,2*	11,7	17,7*	8,2	12,7	6,0	9,6	4,6	7,1	3,1	5,6	2,2	5,6	2,2	12.1
-1.5	25,4*	11,2	17,0	7,6	12,2	5,6	8,7	3,8	7,0	3,0			4,5*	2,4	11.7
-3.0	24,8*	11,2	16,8	7,4	12,0	5,5	8,6	3,7	5,3*	2,8			4,1*	2,7	11.0
-4.5	23,0*	11,6	17,1	7,6	10,7*	4,9	8,1*	3,9					3,5*	3,4	9.7
-6.0	18,6*	12,6	9,3*	7,3	7,0*	5,4							7,0*	5,4	7.5

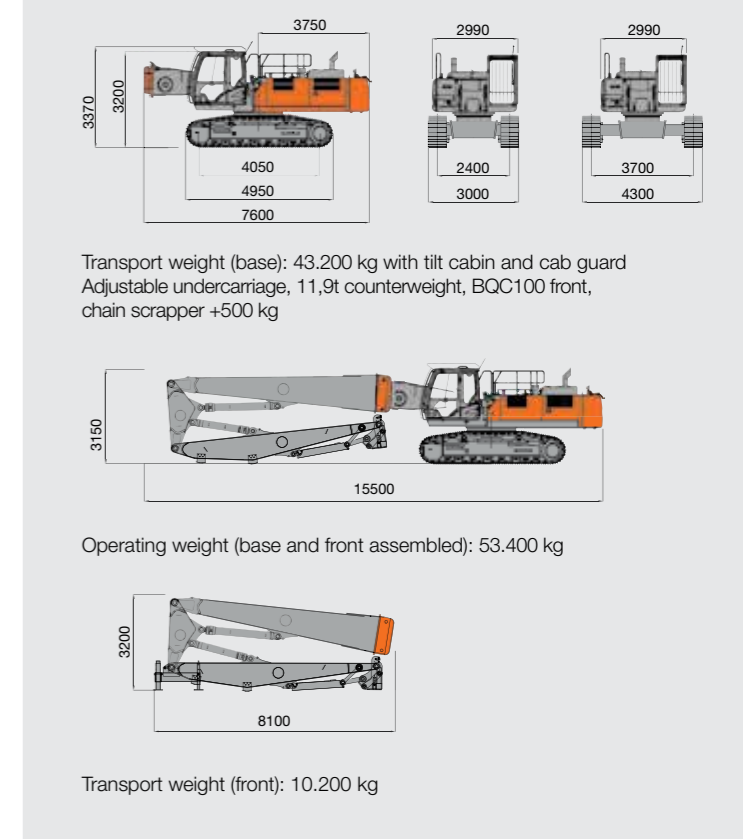
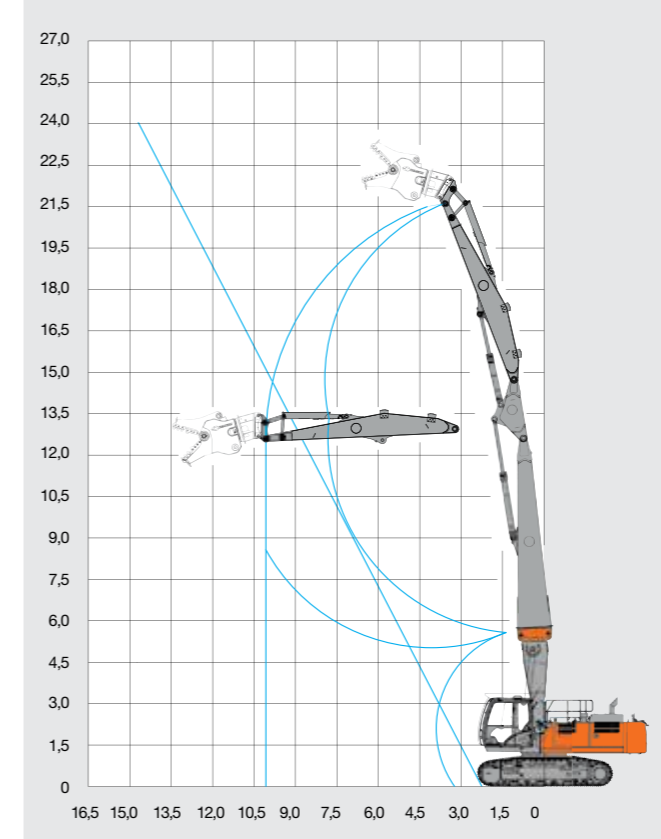
**Note:**  
The load capacities are given in tons (t). Pump pressure 380bar.  
According to ISO 10567, 75% of the static tipping load or 87% of the hydr. lifting force (marked by\*).  
The values apply with a optimum position of the intermediate cylinder. The load point is the centerline of the dipper pin on the arm.  
For lifting operation, pipe rupture safety devices on the boom, intermediate and arm cylinders and an overload warning device are required in accordance with CE directives.

Equipment: 2-Piece Demolition Boom, 3,2m Arm,  
Counterweight 10,5t, 600mm Triple-grouser shoes,  
UC wide  
State: 20220421

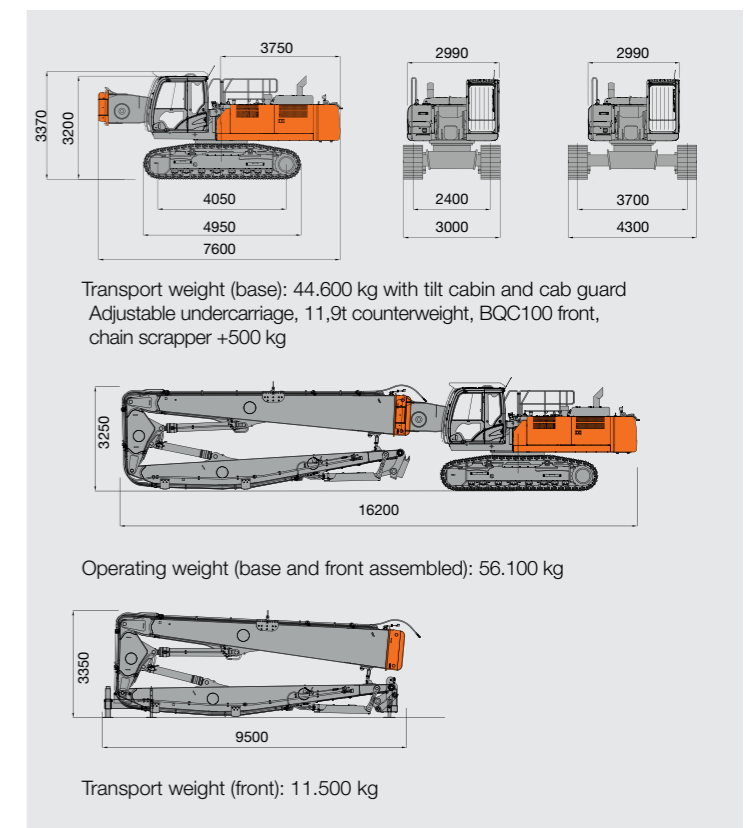
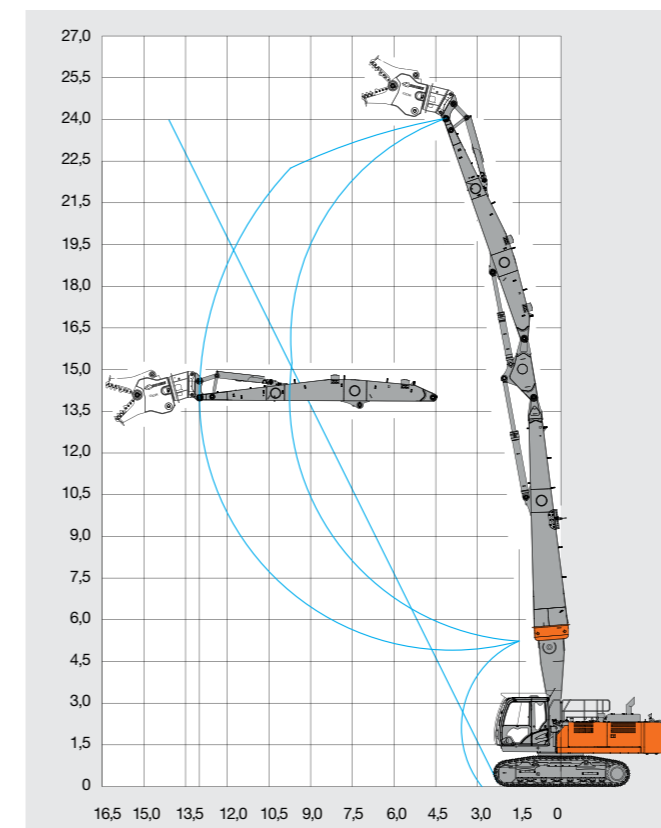
Height (m)	4,5m		6,0m		7,5m		9,0m		10,5m		12,0m		max. Reach		
	0°	360°	0°	360°	0°	360°	0°	360°	0°	360°	0°	360°	0°	360°	Metre
12.0	12,6*	12,6*	12,1*	12,1*									5,8*	5,8*	7.1
10.5	10,9*	10,9*	11,6*	11,6*	11,6*	11,6*							6,3*	6,3*	8.9
9.0	10,3*	10,3*	11,4*	11,4*	12,0*	12,0*	10,7	9,5					6,5*	6,5*	10.1
7.5	14,1*	14,1*	13,7*	13,7*	13,5*	12,8	10,5	9,3	7,8	6,9			6,0*	6,0*	11.0
6.0	19,4*	19,4*	17,4*	17,1	13,6	12,1	10,5*	9,8	7,6	6,7			6,3	5,5	11.6
4.5	15,1	15,1	16,2*	16,2*	12,9*	12,5	10,5	9,3	8,0	7,1	4,3*	4,3*	4,3*	4,3*	12.0
3.0	19,9*	19,9*	17,5*	15,6	13,1	11,5	9,9	8,7	7,7	6,8	5,7	4,9	4,5*	4,5*	12.2
1.5	23,4*	23,4*	16,6	15,2	12,8	11,8	10,5	8,9	7,4	6,4	5,6	4,8	5,2*	4,7	12.2
0.0	24,2*	23,8	17,7*	15,4	12,7	11,1	9,6	8,4	7,1	6,2	5,6	4,8	5,6	4,8	12.1
-1.5	25,4*	23,3	17,0	14,7	12,2	10,6	8,7	7,5	7,0	6,1			4,5*	4,5*	11.7
-3.0	24,8*	23,3	16,8	14,5	12,0	10,0	8,6	7,5	5,3*	5,3*			4,1*	4,1*	11.0
-4.5	23,0*	23,0*	17,1	14,7	10,7*	9,8	8,1*	7,7					3,5*	3,5*	9.7
-6.0	18,6*	18,6*	9,3*	9,3*	7,0*	7,0*							7,0*	7,0*	7.5

## DIMENSIONS

### ZX400MC-7 High-Reach-Front 21m – Maximum tool weight with quick coupler 4000 kg



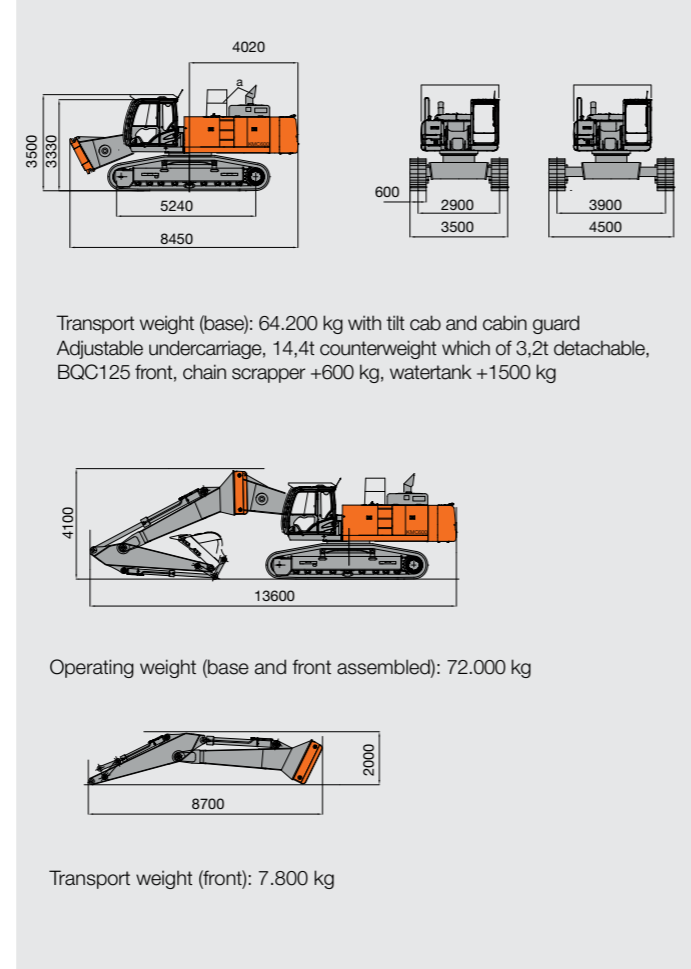
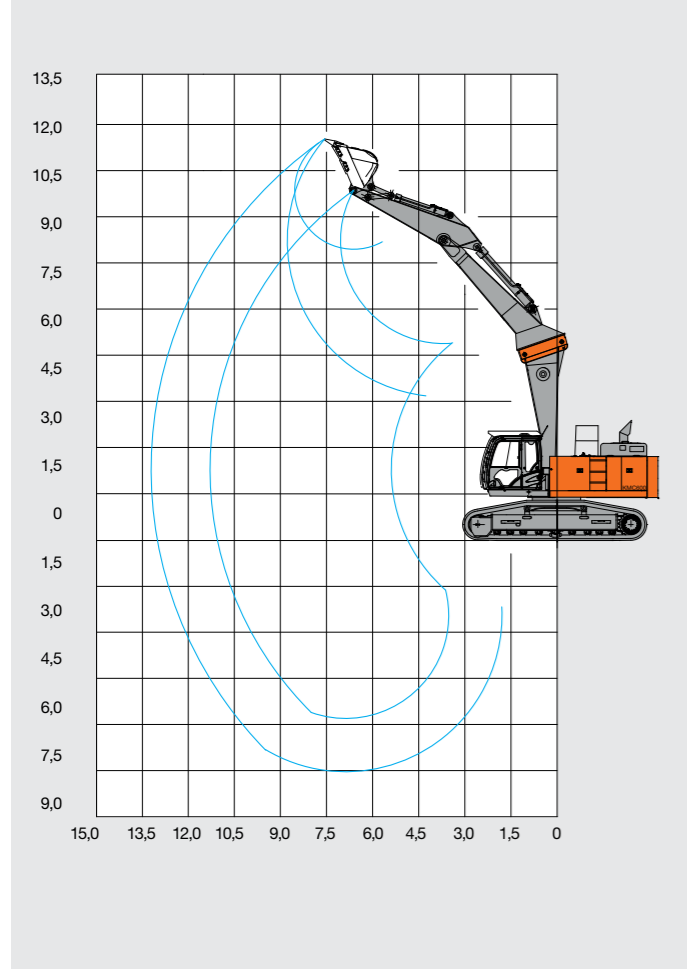
### ZX400MC-7 High-Reach-Front 24m – Maximum tool weight with quick coupler 4000 kg



# SPECIFICATIONS

## DIMENSIONS

### ZX600MC-7 Monoboom-Front



## LIFTING CAPACITIES

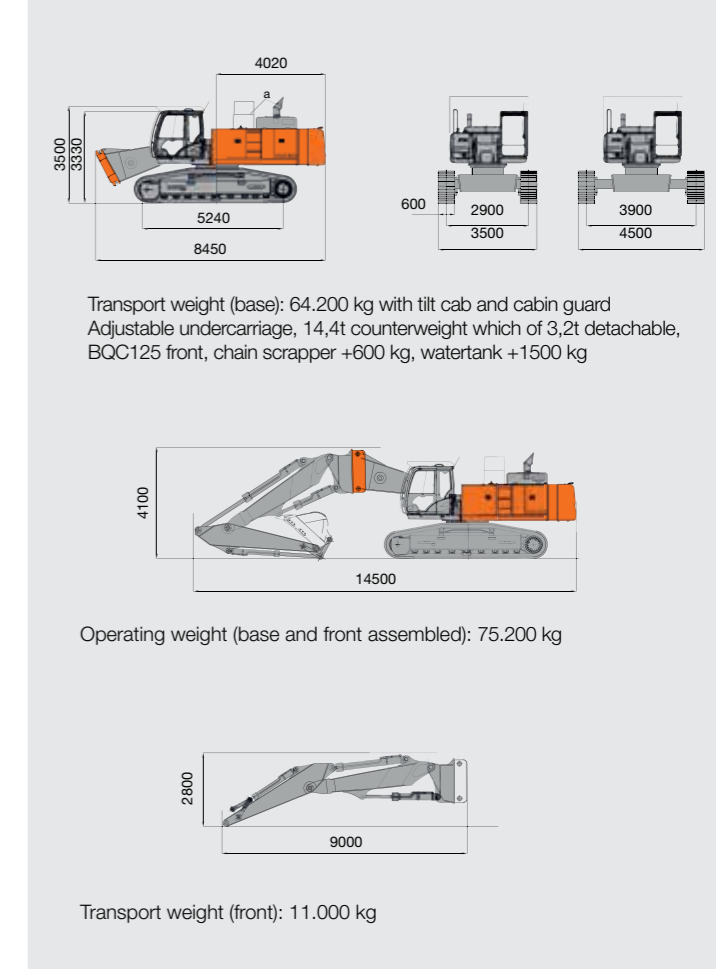
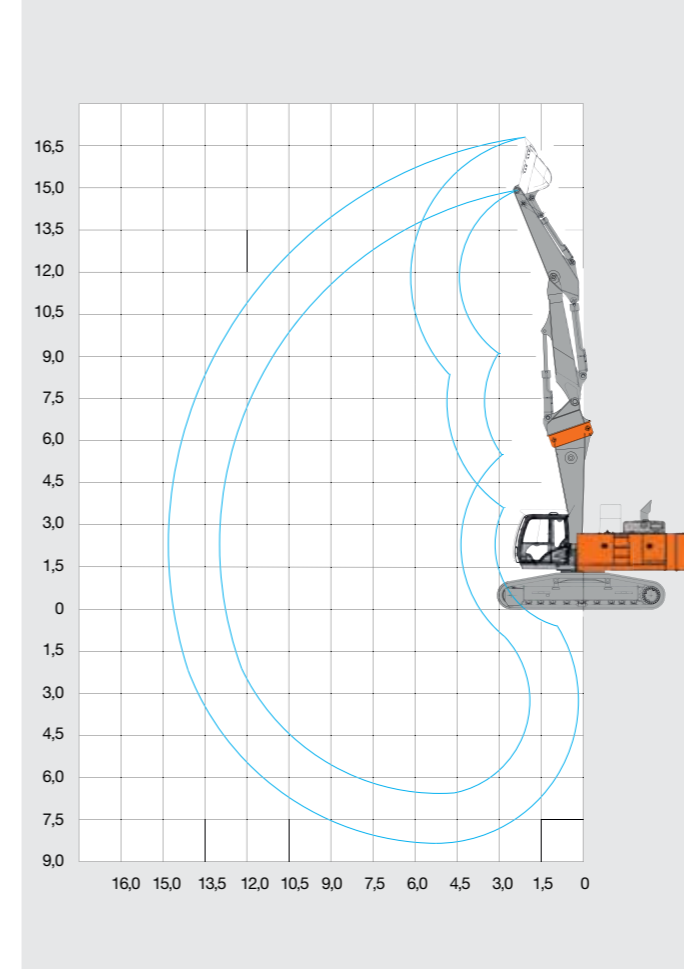
Equipment: Monoboom 8,2m, Arm: 3,4m,  
Counterweight: 11,2t, 600mm Triple-grouser shoes,  
UC narrow  
State: 20220421

Height (m)	4,5m		6,0m		7,5m		9,0m		10,5m		max. Reach	
	0°	360°	0°	360°	0°	360°	0°	360°	0°	360°	0°	360°
10.5					10,3*	10,3*						
9					14,4*	14,4*	8,9*	8,9*			8,9*	8,9*
7.5					17,1*	15,9	14,1*	11,8			9,2*	9,2*
6	30,3*	30,3*	23,0*	21,4	19,2*	15,3	15,8	11,5	9,9*	8,9	8,9*	8,7
4.5			26,2*	19,9	20,2	14,5	15,3	11,0	12,0	8,7	9,3*	8,0
3			26,8	18,4	19,3	13,7	14,8	10,6	11,7	8,4	9,8*	7,6
1.5			25,7*	17,4	18,6	13,0	14,3	10,1	11,4	8,1	10,4	7,4
0			25,2	17,0	18,1	12,5	14,0	9,8	11,2	7,9	10,5	7,4
1.5	15,6*	15,6*	25,0	16,8	17,9	12,3	13,8	9,6	11,1	7,8	11,0	7,7
3	24,6*	24,6*	25,1	16,8	17,8	12,3	13,7	9,6			12,1	8,5
4.5	26,0*	26,0*	22,3*	17,1	18,0	12,4	13,9	9,8			13,9	9,8

**Note:**  
The load capacities are given in tons (t). Pump pressure 380bar.  
According to ISO 10567, 75% of the static tipping load or 87% of the hydr. lifting force (marked by\*).  
The load point is the centerline of the dipper pin on the arm.  
For lifting operation, pipe rupture safety devices on the boom and arm cylinders and an overload warning device are required in accordance with CE directives.

## DIMENSIONS

### ZX600MC-7 2-Piece Demolition Front



## LIFTING CAPACITIES

Equipment: 2-Piece Demolition Boom, Arm 3,4m,  
11,2t Counterweight, UC narrow  
State: 20220421

Height (m)	4,5m		6,0m		7,5m		9,0m		10,5m		12,5m		max. Reach	
	0°	360°	0°	360°	0°	360°	0°	360°	0°	360°	0°	360°	0°	360°
12.0	14,3*	14,3*	14,9*	14,9*	14,4*	14,4*							9,6*	9,6*
10.5	12,8*	12,8*	14,0*	14,0*	14,7*	14,7*	14,0*	10,3					8,1*	8,0
9.0	13,4*	13,4*	14,8*	14,8*	15,5*	14,2	15,4*	10,2	12,8*	7,4			8,9*	6,6
7.5	33,0*	30,2	23,4*	19,1	19,3*	13,3	16,5*	9,7	14,1*	7,3			8,5*	5,6
6.0	22,3*	22,3*	25,6*	17,9	15,5*	12,0	10,3*	9,1	14,1*	6,9	11,4	5,3	7,5*	4,9
4.5	28,1*	28,1*	20,5*	20,5*	16,9*	10,8	14,8*	8,3	14,0*	6,5	11,2	5,1	8,7*	4,6
3.0	21,3*	21,3*	23,2*	18,5	18,4*	9,7	15,6*	7,7	13,5	6,1	11,0	4,9	8,3*	4,3
1.5	17,6*	17,6*	25,2*	16,4	18,2*	9,2	15,4*	7,2	12,9*	5,8	10,6*	4,8	8,5*	4,3
0.0	22,6*	22,6*	26,1*	15,1	16,0*	9,0	14,0*	7,0	11,8*	5,7	9,4*	4,7	7,8*	4,4
-1.5	29,5*	21,8	26,0*	14,3	13,3*	9,1	12,0*	7,0	10,0*	5,6	7,4*	4,8	6,6*	4,7
-3.0	32,2*	21,8	25,0*	14,0	10,0*	9,3	9,3*	6,4	7,5*	5,8			5,3*	5,2
-4.5	28,8*	21,2	22,7*	14,1	10,0*	10,0*	8,5*	6,0					3,9*	3,9*

**Note:**  
The load capacities are given in tons (t). Pump pressure 380bar.  
According to ISO 10567, 75% of the static tipping load or 87% of the hydr. lifting force (marked by\*).  
The values apply with an optimum position for the intermediate cylinder. The load point is the centerline of the dipper pin on the arm.  
For lifting operation, pipe rupture safety devices on the boom, intermediate and arm cylinders and an overload warning device are required in accordance with CE directives.

Equipment: 2-Piece Demolition Boom, Arm 3,4m,  
11,2t Counterweight, UC wide  
State: 20220421

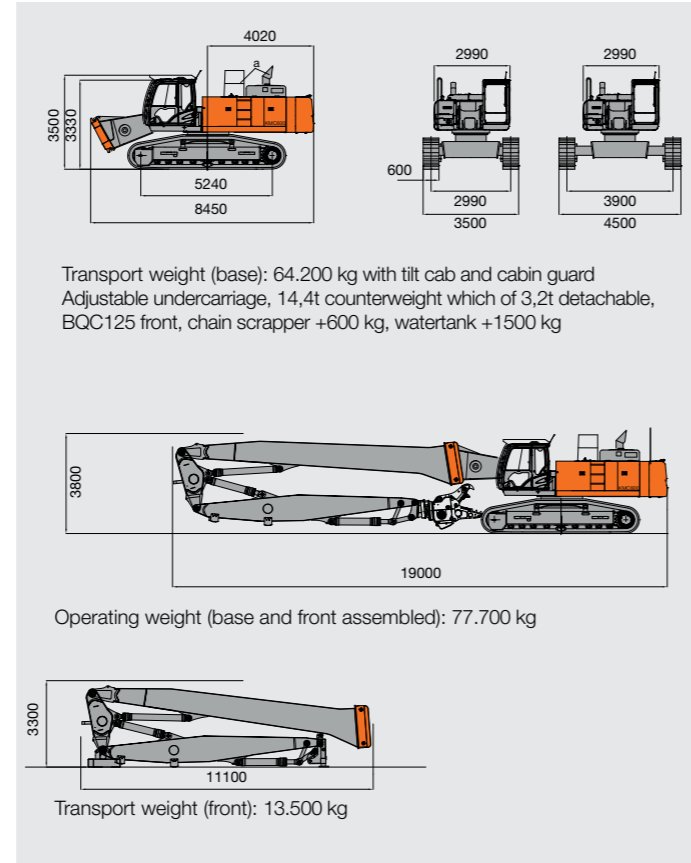
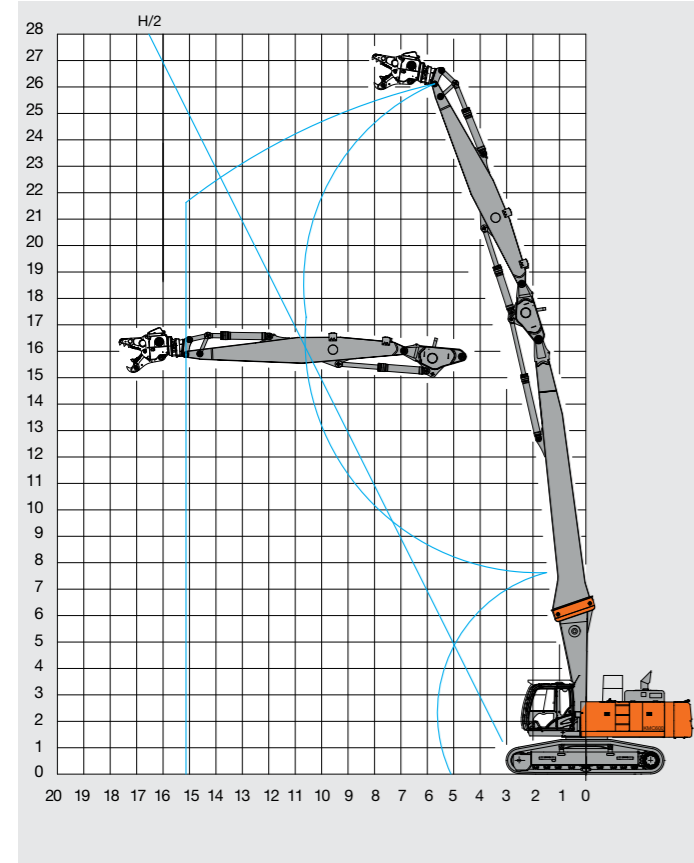
Height (m)	4,5m		6,0m		7,5m		9,0m		10,5m		12,5m		max. Reach	
	0°	360°	0°	360°	0°	360°	0°	360°	0°	360°	0°	360°	0°	360°
12.0	14,3*	14,3*	14,9*	14,9*	14,4*	14,4*							9,6*	9,6*
10.5	12,8*	12,8*	14,0*	14,0*	14,7*	14,7*	14,0*	14,0*					8,1*	8,1*
9.0	13,4*	13,4*	14,8*	14,8*	15,5*	15,5*	15,4*	14,6	12,8*	10,9			8,9*	8,9*
7.5	33,0*	33,0*	23,4*	23,4*	19,3*	19,2	16,5*	14,1	14,1*	10,7			8,5*	8,5*
6.0	22,3*	22,3*	25,6*	25,1	15,5*	15,5*	10,3*	10,3*	14,1*	10,4	11,4	8,1	7,5*	7,5*
4.5	28,1*	28,1*	20,5*	20,5*	16,9*	16,9*	14,8*	14,8*	14,0*	9,9	11,2	8,0	8,7*	7,2
3.0	21,3*	21,3*	23,2*	23,2*	18,4*	18,4*	15,6*	11,9	13,5	9,5	11,0	7,7	8,3*	6,9
1.5	17,6*	17,6*	25,2*	25,0	18,2*	14,7	15,4*	11,4	12,9*	9,2	10,6*	7,6	8,5*	6,8
0.0	22,6*	22,6*	26,1*	23,5	16,0*	14,5	14,0*	11,2	11,8*	9,0	9,4*	7,5	7,8*	7,0
-1.5	29,5*	29,5*	26,0*	22,6	13,3*	13,3*	12,0*	11,1	10,0*	9,0	7,4*	7,4*	6,6*	6,6*
-3.0	32,2*	32,2*	25,0*	22,3	10,0*	10,0*	9,3*	9,3*	7,5*	7,5*			5,3*	5,3*
-4.5	28,8*	28,8*	22,7*	22,4	10,0*	10,0*	8,5*	8,5*					3,9*	3,9*

# SPECIFICATIONS

## DIMENSIONS

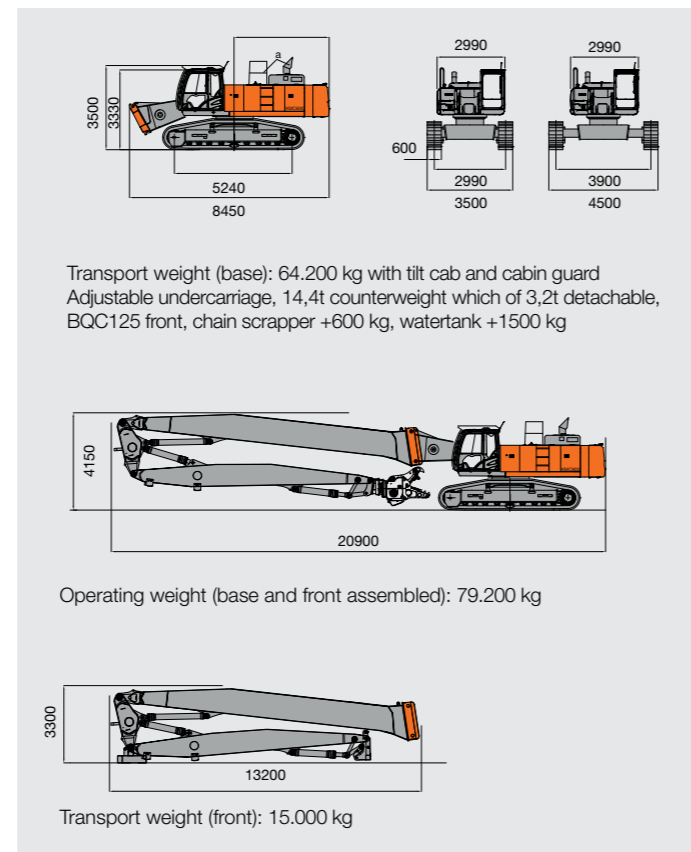
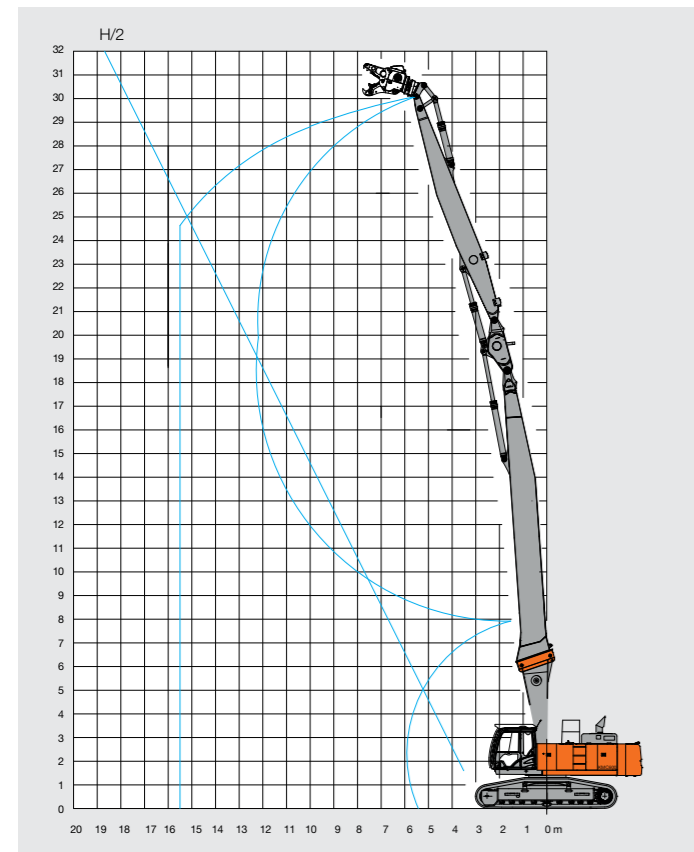
### ZX600MC-7

High-Reach-Front 26m – Maximum tool weight with quick coupler 4000 kg



### ZX600MC-7

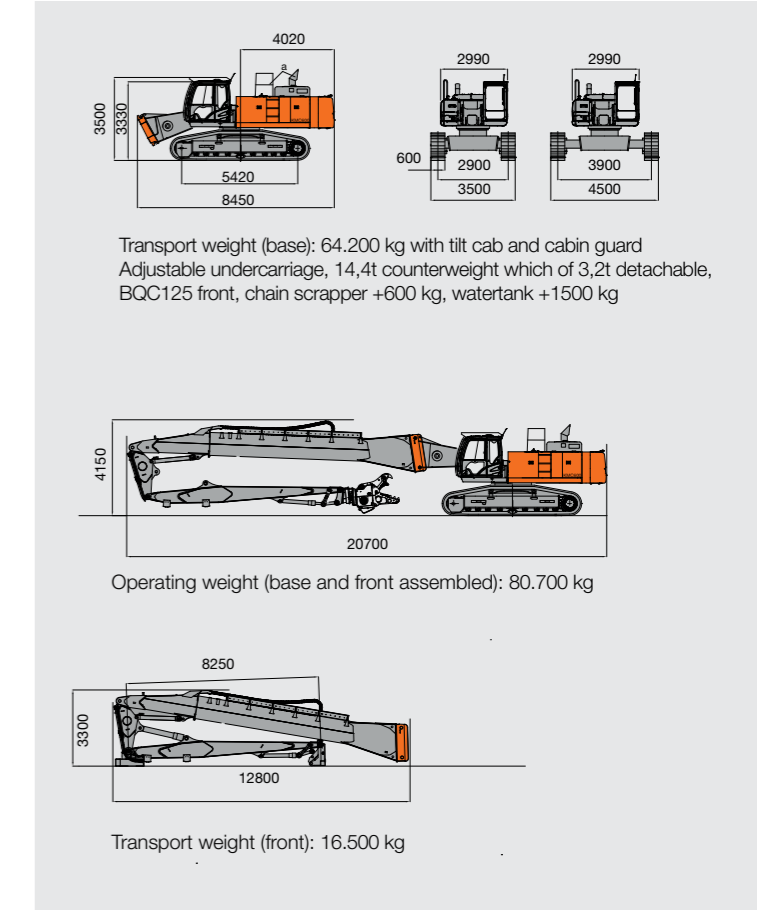
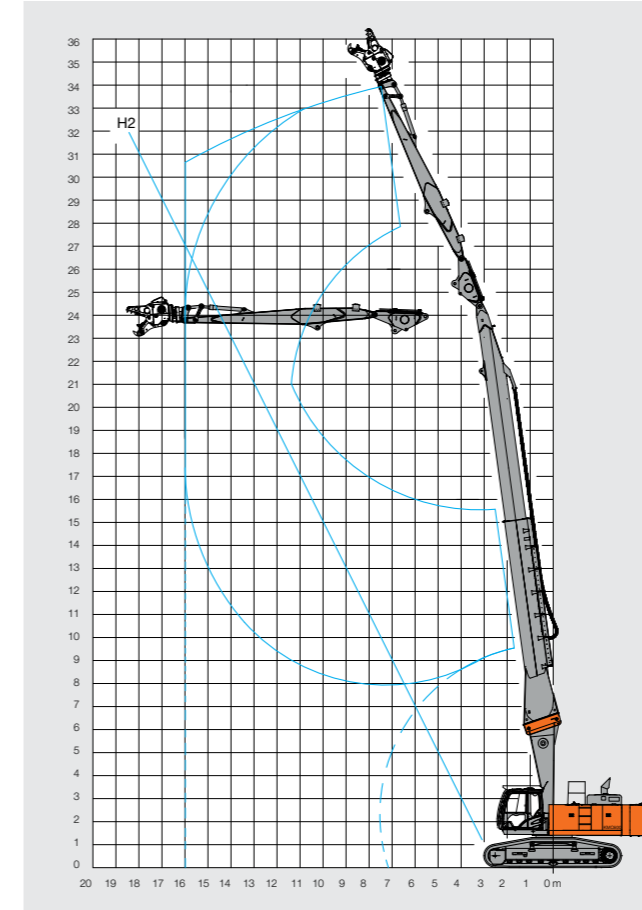
High-Reach-Front 30m – Maximum tool weight with quick coupler 3500 kg



## DIMENSIONS

### ZX600MC-7

Tele-High-Reach-Front 34m – Maximum tool weight with quick coupler 3500 kg



## ZX600MC-7 OVERVIEW

### Engine

Model	Isuzu 6WG1
Type	4-cycle water-cooled, common rail direct injection
Aspiration	Variable geometry turbocharged, intercooled, cooled EGR
Aftertreatment	DOC, CSF and SCR system
No. of cylinders Rated power	6
ISO 14396	296 kW at 1 800 min <sup>-1</sup>
ISO 9249, net	295 kW at 1 800 min <sup>-1</sup>
SAE J1349, net	295 kW at 1 800 min <sup>-1</sup>
Maximum torque	2 050 Nm at 1 300 min <sup>-1</sup>
Piston displacement	15.681 L
Bore and stroke	147 mm x 154 mm
Batteries	2 x 12 V / 170 Ah

### Hydraulic cylinders

ZX600MC-7	Quantity	Bore	Rod diameter	Unit mm
Outer Boomcyl of Base Boom	2	170	115	
Inner Boomcyl of Base Boom	1	185	120	
Arm (for Mono & 2PB)	1	190	130	
Bucket (for Mono & 2PB)	1	170	120	
Positioning for 2PB	2	180	120	
Mid-Dipper HR26m & HR30m	1	200	140	
Arm HR26m & HR30m	1	190	130	
Bucket HR26m & HR30m	1	130	90	
Mid-Dipper THR34m	1	200	140	
Arm THR34m	1	190	130	
Bucket THR34m	1	140	95	

### Hydraulic system

Hydraulic Pumps	
Main pumps	2 variable displacement axial piston pumps
Maximum oil flow	2 x 385 L/min
Pilot pump	1 gear pump
Maximum oil flow	30 L/min
Hydraulic Motors	
Travel	2 variable displacement axial piston motors
Swing	2 axial piston motors
Relief Valve Settings	
Implement circuit	31.9 Mpa
Swing circuit	28.4 Mpa
Travel circuit	35.3 Mpa
Pilot circuit	3.9 Mpa
Power boost	35.3 Mpa

### Note:

- 2PB = Two-Piece-Boom
- Mono = Mono-Boom
- Mid-Dipper = Intermediate Arm
- HR = High-Reach
- TC = Tool Carrier
- MC = Multi Carrier





Prior to operating this machine, including satellite communication system, in a country other than a country of its intended use, it may be necessary to make modifications to it so that it complies with the local regulatory standards (including safety standards) and legal requirements of that particular country. Please do not export or operate this machine outside the country of its intended use until such compliance has been confirmed. Please contact your Hitachi dealer in case of questions about compliance.

These specifications are subject to change without notice. Illustrations and photos show the standard models, and may or may not include optional equipment, accessories, and all standard equipment with some differences in colour and features. Before use, read and understand the Operator's Manual for proper operation.

