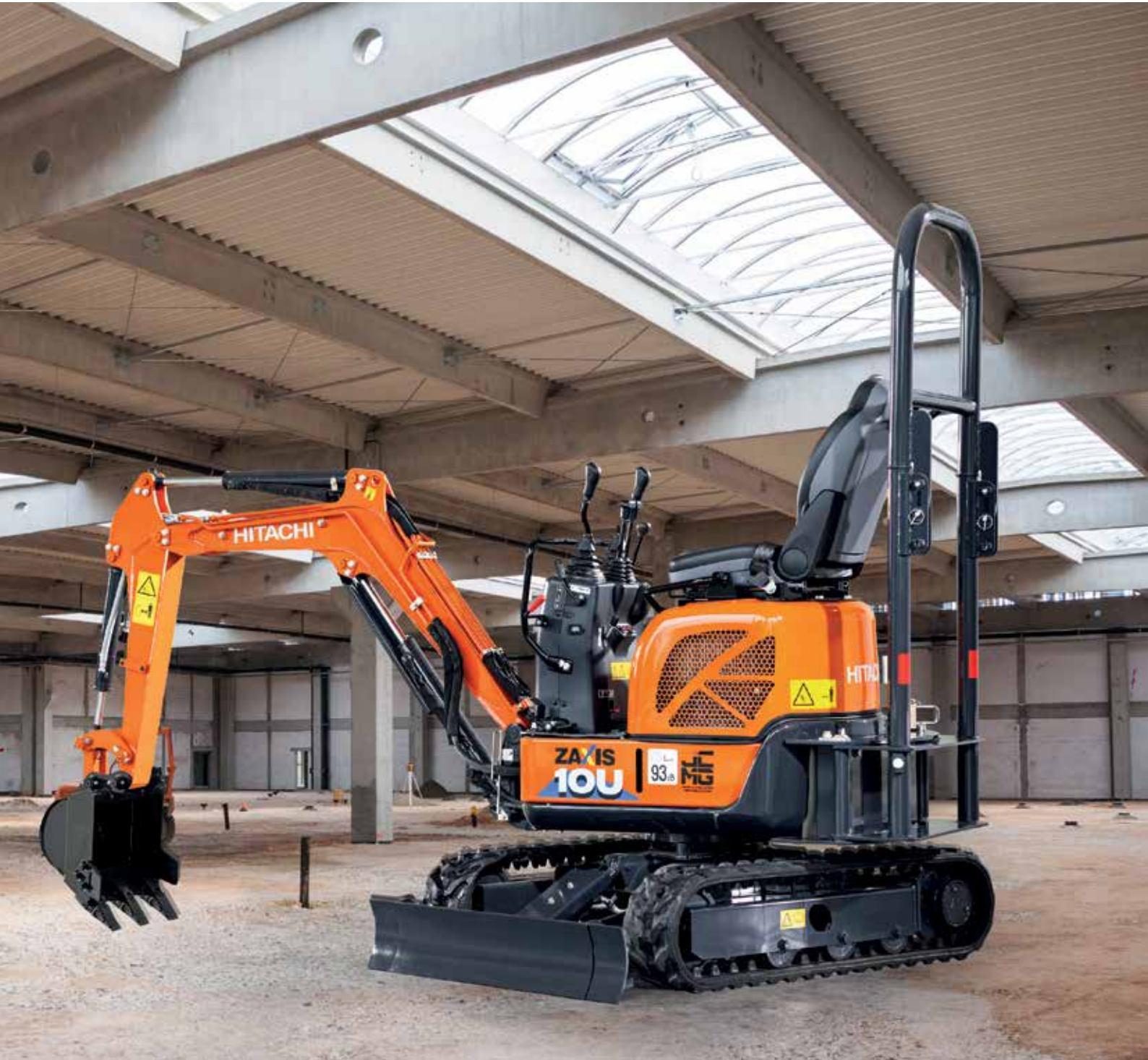


ZAXIS-6 series

HITACHI

Reliable Solutions

ZAXIS10U



HYDRAULIC EXCAVATOR

Model code : ZX10U-6

Engine rated power : 9.9 kW (ISO 14396 : 2002)

Operating weight : 1 210 kg

Bucket ISO heaped : 0.022 m³

Perfect fit

Manufactured at our state-of-the-art factory in Japan, the compact ZX10U-6 is designed to offer exceptional productivity in confined spaces. It's the perfect fit for projects such as housing foundations, indoor renovation, utilities and landscaping.



Excellent efficiency

Two travel speeds (4km/h and 2km/h) ensure efficient movement around the job site.



Compact design

Short-tail swing is ideal for working in confined spaces.



Powerful operation

Three-cylinder engine for tough excavating jobs.



Time-saving maintenance

Hinged seat, high-capacity fuel tank and wide-opening engine cover.



Smooth control

Hydraulic pilot control levers provide easy operation.



Exceptional versatility

Retractable undercarriage and blade enhances versatility for various applications.



Versatile all-rounder

The smallest mini excavator in the Hitachi range, the ZX10U-6 is versatile for a wide range of applications, easy to operate and maintain, and delivers a powerful performance.

Compact and powerful

The compact ZX10U-6 is ideal for working in small spaces thanks to its short-tail swing radius of 825mm and minimum width of 780mm. This can be extended to 1,000mm with the adjustable undercarriage and blade. It is equipped with a powerful three-cylinder engine for challenging excavation tasks.

Efficient manoeuvring

The ZX10U-6 has high and low travel speeds, which enables the excavator to move smoothly and efficiently around the job site. The outside flange-type lower roller enhances operator comfort during travel, due to increased stability.

Safe and easy operation

The relocated seatbelt enhances operator safety and comfort. The lockable operator's manual compartment improves security and is easily accessible.

Easy to transport

With a retractable undercarriage and blade, and collapsible TOPS-compliant roll bar, the ZX10U-6 can be conveniently adjusted to make it easier to transport.



The ignition switch is easy to access and the monitor shows status indicators at a glance.



Sliding seat with relocated seatbelt, engine cover handles and reclining stopper.



Wide-opening covers allow for easy maintenance.

SPECIFICATIONS

ENGINE

Model	3TNV70
Type	Water-cooled, 4-cycle, 3-cylinder swirl combustion chamber injection type diesel engine
Rated power	
ISO 14396 : 2002	9.9 kW at 2 100 min ⁻¹
ISO 9249 : 2007	9.5 kW at 2 100 min ⁻¹
Maximum torque	50.5 N.m at 1 500 min ⁻¹
Piston displacement	0.854 L
Bore and stroke	70 mm x 74 mm
Battery	1 x 12 V / 36 Ah

HYDRAULIC SYSTEM

Hydraulic Pumps

Main pumps	2 gear pumps
Maximum oil flow	2 x 10.6 L/min
Pilot pump	1 gear pump
Maximum oil flow	6.3 L/min

Hydraulic Motors

Travel	2 variable displacement axial piston motors
Swing	1 gear pump

Relief Valve Settings

Main pumps circuit	17.7 Mpa
Pilot circuit	3.9 Mpa

Hydraulic Cylinders

	Quantity	Bore	Rod diameter	Stroke
Boom	1	55 mm	30 mm	355 mm
Arm	1	50 mm	30 mm	356 mm
Bucket	1	50 mm	25 mm	282 mm
Boom swing	1	50 mm	25 mm	260 mm
Blade	1	55 mm	30 mm	87 mm
Span	1	50 mm	25 mm	237 mm

CONTROLS

Boom, arm, bucket, and swing are hydraulic pilot system. Travel, boom swing, blade, side frame extend/retract and valve for extra piping are mechanically operated.

BACKHOE ATTACHMENTS

Buckets

Capacity	Width		No. of teeth	Weight	Front Attachment	
	Without side cutters	With side cutters			0.81 m arm	0.96 m arm
ISO 7451 : 2007 heaped						
0.018 m ³	300 mm	320 mm	3	15.0 kg	A	A
0.022 m ³	350 mm	370 mm	3	16.2 kg	A	B
0.024 m ³	380 mm	400 mm	3	16.9 kg	B	B
Arm crowd force ISO 6015 : 2006					5.9 kN (610 kgf)	5.5 kN (570 kgf)
Bucket digging force ISO 6015 : 2006					11.7 kN (1 200 kgf)	11.7 kN (1 200 kgf)

A: General digging B: Light-duty digging

SWING MECHANISM

High-torque, orbit motor. Swing circle is single-row, shear-type ball bearing with induction-hardened internal gear. Internal gear and pinion are immersed in lubricant.

Swing speed	8.5 min ⁻¹
Swing torque	0.7 kNm

UNDERCARRIAGE

Tracks

Tractor-type undercarriage. Welded track frame using carefully selected materials. Side frame extended by span cylinder.

Numbers of Rollers on Each Side

Lower rollers	3
---------------------	---

Travel Device

Each track driven by a high-torque, 2-speed axial piston motor through planetary reduction gear, allowing counter-rotation of the tracks.

Travel speeds	High: 0 to 4.0 km/h
(with rubber shoes)	Low: 0 to 2.0 km/h

Maximum traction force.... 7.0 kN (710 kgf)

Gradeability

58% (30 degree) continuous*
*However, avoid ascending/descending slope with the grade of more than 27% (15 degree) to avoid a hazardous situation.

SOUND LEVEL

Sound level in rool bar according to ISO 6396 : 2008 LpA 78 dB(A)

External sound level according to ISO 6395 : 2008 and EU Directive 2000/14/EC LwA 93 dB(A)

WEIGHTS AND GROUND PRESSURE

Rool bar (Rotary type)

Including with 0.81 m arm and 0.022 m³ (ISO 7451 : 2007 heaped) bucket.

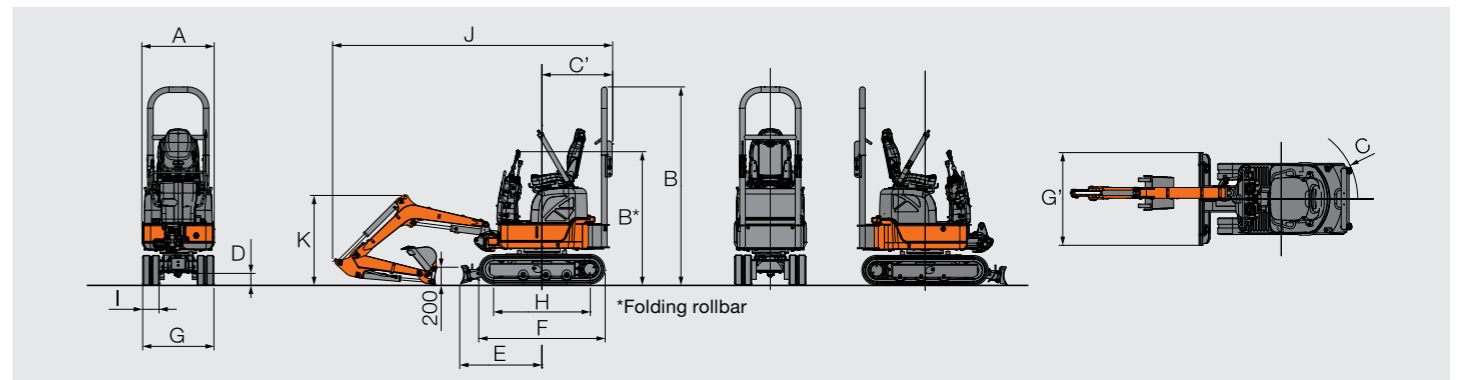
	Operating weight	Ground pressure
180 mm rubber shoes	1 210 kg	26 kpa (0.27 kgf/cm ²)

SERVICE REFILL CAPACITIES

Fuel tank	16.0 L
Engine coolant	3.3 L
Engine oil	2.8 L
Travel device (each side)	0.33 L
Hydraulic system	18.0 L
Hydraulic oil tank (Reference oil level)	12.0 L

SPECIFICATIONS

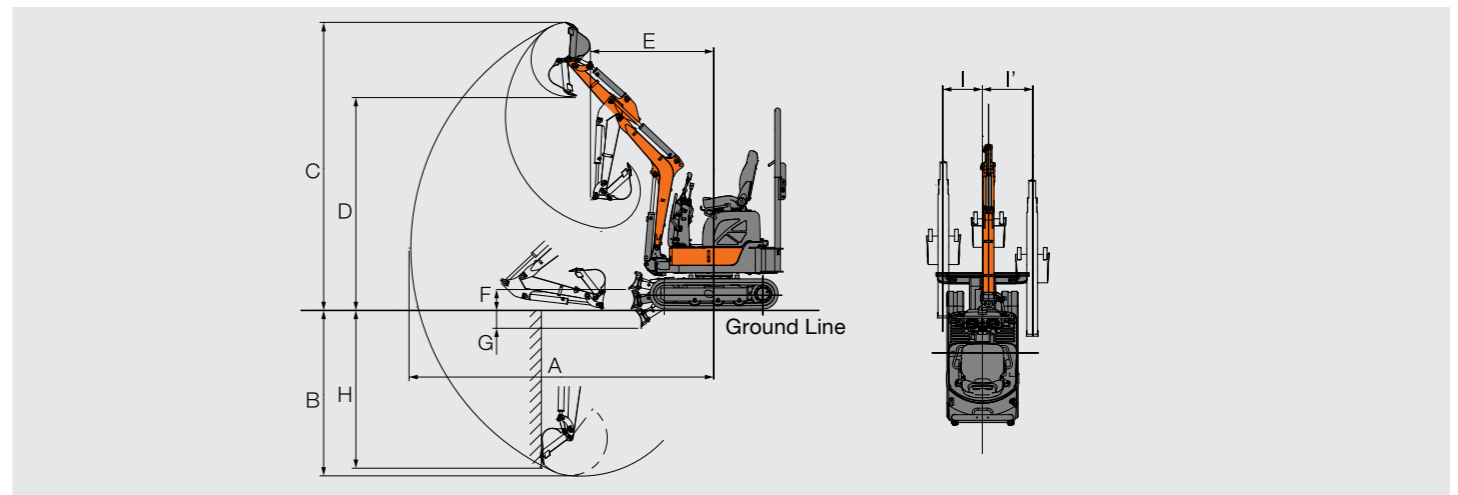
DIMENSIONS



Note:
The illustration shows the ZAXIS 10U-6 equipped with 0.81 m arm and 180 mm rubber shoes.
The Roll Bar conforms to TOPS (ISO 12117 : 1997) requirements.

	ZAXIS 10U	Unit: mm
A Overall width	780	
B Overall height (Folding roll bar)	2 150 (1 450)	
C Rear-end swing radius	826	
C' Rear-end swing length (with roll bar)	760	
D Min. ground clearance	130	
E Horizontal distance of blade installation	885	
F Undercarriage length	1 360	
G Undercarriage width: Extended / Retracted	1 000 / 760	
G' Blade width: Extended / Retracted	1 000 / 780	
H Distance between tumbler	1 040	
I Track shoe width	180	
J Max. transport length (Folding roll bar)	3 020 (3 090)	
K Overall height of boom	970	

WORKING RANGES



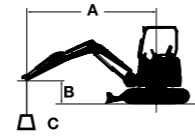
Note:
The illustration shows the ZAXIS 10U-6 equipped with 0.022 m³ bucket, 0.81 m arm and 180 mm rubber shoes.

	ZAXIS 10U	Unit: mm
A Max. digging reach	3 220	
B Max. digging depth	1 780	
C Max. cutting height	3 010	
D Max. dumping height	2 220	
E Min. swing radius (At max. boom swing)	1 310 (1 100)	
F Blade bottom highest position above ground	220	
G Blade bottom lowest position above ground	190	
H Max. vertical wall	1 670	
I / I' Offset distance (Max. boom-swing angle degrees)	420 (55)/535 (65)	

MACHINE CAPACITIES

- Notes:
1. Rating are based on ISO 10567 : 2007.
 2. Machine capacity of the ZAXIS Series does not exceed 75% of tipping load with the machine on firm, level ground or 87% full hydraulic capacity.
 3. Load point is the center - line of the Bucket pivot mounting Pin on the Arm.
Side: Rating over-side or 360 degrees
Front: Rating over-front
 4. An asterisk mark (*) indicates load limited by hydraulic capacity.

To determine lifting capacities, apply "Rating over-side or 360 degrees" machine capacities from the table and deduct weight of installed attachment and quick coupler.
Optional feature may affect machine performance.



- A: Load radius
- B: Load point height
- C: Lifting capacity

ZAXIS 10U Blade above Ground, 0.81 m Arm

Rating over-front Rating over-side or 360 degrees Unit : kg

Conditions	Load point height m	Load radius				At max. reach		
		1.0 m		2.0 m		meter		
Rubber shoes 180 mm	1.0			270	240	170	150	2.80
	0 (Ground)			260	230	170	150	2.73
	-1.0	*730	680	260	230	240	220	2.10

EQUIPMENT

● : Standard equipment ○ : Optional equipment

ENGINE

Alternator 12V - 40 A	●
Electrical fuel feed pump	●
Neutral engine start system	●
Radiator reserve tank	●

HYDRAULIC SYSTEM

Full-flow filter	●
Hydraulic pilot type control levers	●
Pilot filter	●
Suction filter	●
Two-speed travel system	●
Valve for extra piping	●

OPERATOR'S ROOM

Electric horn	●
Floor mat	●
Power outlet 12V	●
Seat belt	●
Suspension seat with reclining	●
TOPS roll bar (Rigid type)	○
(ISO 12117 : 1997) compliant	
TOPS roll bar (Rotary type)	●
(ISO 12117 : 1997) compliant	

LIGHTS

Working LED light	●
-------------------	---

UPPERSTRUCTURE

Batteries 1 x 36 Ah	●
Mechanical swing parking brake	●

UNDERCARRIAGE

Retractable blade	●
Retractable undercarriage	●
Rubber shoe 180 mm	●

FRONT ATTACHMENTS

Extra piping	●
HN bushing	●
0.81 m arm	●
1.46 m boom	●

Standard and optional equipment may vary by country, so please consult authorized dealer for details.

Prior to operating this machine, including satellite communication system, in a country other than a country of its intended use, it may be necessary to make modifications to it so that it complies with the local regulatory standards (including safety standards) and legal requirements of that particular country. Please do not export or operate this machine outside the country of its intended use until such compliance has been confirmed. Please contact authorized dealer in case of questions about compliance.

These specifications are subject to change without notice. Illustrations and photos show the standard models, and may or may not include the latest feature updates, optional equipment, accessories, and all standard equipment with some differences in colour and features. Before use, read and understand the Operator's Manual for proper operation.

