

Hitachi Construction Machinery

SELECTED PARTS

HITACHI

Reliable solutions

Hitachi Construction Machinery Selected Parts Catalog

**GET
PARTS**

**UNDERCARRIAGE
PARTS**



promotion video

ABOUT Hitachi Construction Machinery Selected Parts *1

*1 Hereinafter called "Selected Parts".

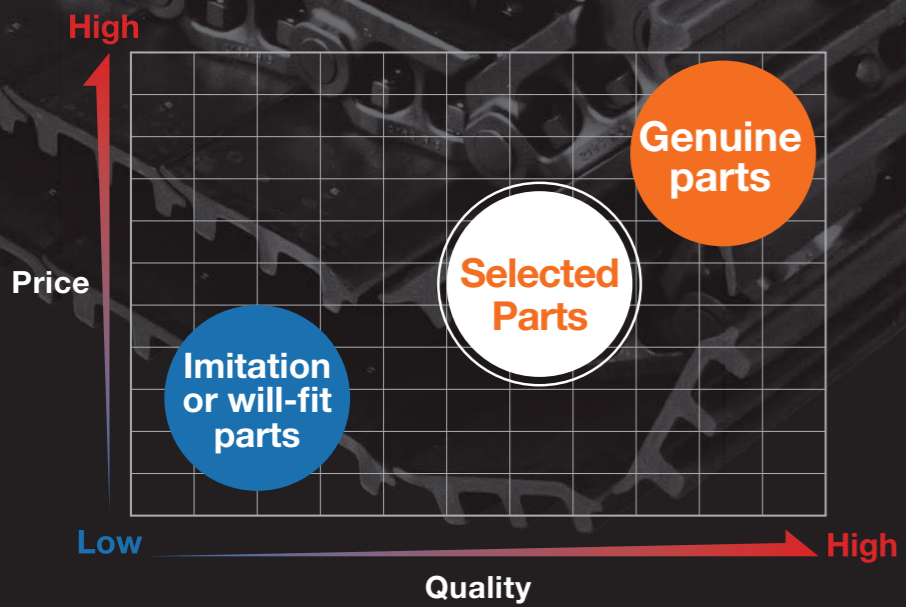
Selected Parts is the new parts line-up of Hitachi Construction Machinery for after-sales service support.

It covers wide range of our machines.

Parts warranty is same as Hitachi Genuine Parts but price is lower.

-  Excellent durability under the working environments of heavy equipment
-  Designed based on Hitachi Construction Machinery Company's technology
-  The warranty program provides the equivalent term with Hitachi Genuine Parts *2
-  Global sales network

*2 This warranty program would not apply to normal wear and tear of the product. Please contact to Hitachi authorized dealers for the details of warranty conditions.



GET PARTS

UNDERCARRIAGE PARTS

Example of utilization of Selected Parts to lower the lifecycle cost of a machine

Delivery of a machine

Since the bucket teeth was worn-out and work efficiency had started to drop, the bucket teeth were replaced.



POINT 01
A wide variety of bucket consumable parts are prepared and available. It is possible to change certain parts to ones most suitable to each application.

It was found out that some undercarriage parts has worn-out during a special machine-visit inspection.



Parts will be replace before becoming an actual failure.



POINT 02
Since the price of Selected Parts are lower than Hitachi Genuine Parts, it is economically feasible to replace parts in a preventive manner.

Since the machine had been engaged in heavy duty work for few days, few of the track links has cracked. They were replaced as individual parts as oppose to the track link assemble replacement.



POINT 03
Since various parts are available as individual parts or sub-assembly, you do not need to replace the whole track link assemblies.

Replacement of the machine

LIFECYCLE OF PARTS

Five Features of Selected Parts

Features

Material

Manufacture

Configuration

Warranty

Supply

5 FEATURES

- FEATURE 01 Material** Optimal anti-wear, impact resistance and lubricating property
- FEATURE 02 Manufacture** Strict manufacturing processes and quality control
- FEATURE 03 Configuration** Design based on Hitachi Construction Machinery company's technology
- FEATURE 04 Warranty** The warranty program provides the equivalent term with Hitachi Genuine Parts
- FEATURE 05 Supply** Global supply system

FEATURE 01 FEATURE 02 Material / Manufacture

Excellent durability required for the heavy equipment's working environments

| | | | |
|--------------------------------------|---------------|----------------|-----------------------------|
| | Genuine parts | Selected Parts | Imitation or will-fit parts |
| Anti-wear quality/ Impact resistance | ◎ | ○ | △ |

FEATURE 03 Configuration

Designed based on Hitachi Construction Machinery Company's technology

Shapes calculated to maintain sufficient strength to prevent early performance degradation (wear and cracking).

FEATURE 04 Warranty

We secure the parts with warranty equivalent to Hitachi Genuine Parts

The warranty term is for 1 year/unlimited hour from the date the parts were installed on the machine or purchased.

Install the parts on the machine and start warranty!

1 YEAR UNLIMITED
1 year warranty

FEATURE 05 Supply

Hitachi Construction Machinery's Global sales network

You can purchase from Hitachi Construction Machinery dealers around the world when needed. Please contact your nearest Hitachi Construction Machinery dealer.

● Hitachi Construction Machinery's Global supply ●

UNDERCARRIAGE PARTS

List of undercarriage parts

Idler
Sprocket
Upper roller
Lower roller
Track link



Regarding icons in the text;

Mini "Mini" indicates 1.4 to 8 ton excavators.

Examples: ZX14, ZX85, etc.

Mid "Mid" indicates 10 to 35 ton excavators.

Examples: ZX110, ZX270, etc.

Large "Large" indicates 45 to 87 ton excavators.

Examples: ZX450, ZX890, etc.



Idler

Mini **Mid** **Large**

Idlers are to adjust the track link tension, which make track links to run on the rollers smoothly by expansion and contraction mechanism, and prevent the machine from falling.

Sprocket

Mini **Mid** **Large**

Sprockets play an important role to convey rotating force to the track links. If the sprocket teeth is worn out, the traveling force of the machine will get weaker and premature wearing of track links will occur. The teeth of Selected Parts sprockets are carefully heat treated to increase their anti-wear quality.



Application example: Forestry operation

In forestry operation, undercarriage parts worn out faster, so Selected Parts becomes handy due to its reasonable pricing.

ZX-1,3,5,6
type
1.4~8t

ZX-1,3,5,6
type
10~35t

ZX-1,3,5,6
type
45~87t

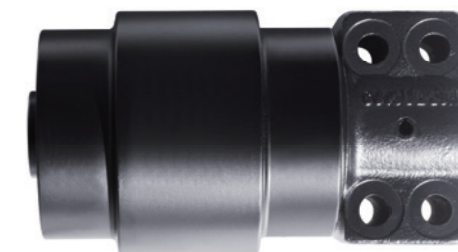


UNDERCARRIAGE PARTS

Upper roller

Mini **Mid** **Large**

Upper rollers rotate and guide track links so that the track links move smoothly under various ground conditions. If they don't rotate normally, the track links will be worn out prematurely. Selected Parts upper rollers are deeply heat treated and their metal texture is fine and uniform.



Lower roller

Mini **Mid** **Large**

Lower rollers play an important role to guide the track links so that the links move smoothly under various ground conditions. However, the lower rollers are prone to wearing and breakage. If they get worn beyond a certain limit, contact with track links becomes skewed, which will lead to premature wearing of the links. Selected Parts lower rollers are deeply heat treated and their metal texture is fine and uniform.

Track link

Mini **Mid** **Large**

Track links play an important role in the traveling system and it is necessary to frequently adjust their tension. If they get worn beyond a certain limit, wearing will get faster. Eventually, they get derailed. The right and left end sections of Selected Parts track links are carefully heat treated to increase their anti-wear property.

* Track;Link (Unit) are available as individual parts so that a single section or an inner part can be replaced. Refer to page 16 for details.



GET PARTS



List of GET parts

- Tooth adapter
- Tooth point
- Side cutter
- Shroud
- Lock pin and rubber

Application example: Mining

Although bucket parts get worn or broken much faster in mining operation, the maintenance cost can be kept reasonable thanks to Selected Parts.

ZX-1,3,5,6 type
1.4~8t

ZX-1,3,5,6 type
12~35t

ZX-1,3,5,6 type
45~87t



Regarding icons in the text;

- Mini** "Mini" indicates 1.4 to 8 ton excavators.
Examples: ZX14, ZX85, etc.
- Mid** "Mid" indicates 12 to 35 ton excavators.
Examples: ZX110, ZX270, etc.
- Large** "Large" indicates 45 to 87 ton excavators.
Examples: ZX450, ZX890, etc.

Lock pin and rubber

Mini **Mid** **Large**

Prevent tooth adapters from falling out.



Tooth adapter

Mini **Mid** **Large**

For fastening teeth to the bucket.



Side cutter

Mini **Mid** **Large**

Improves cutting ability of the side plates of the bucket and also prevent the side plates from wearing.

Tooth point

Mini **Mid** **Large**

Used for general excavation or making the surface of a slope smooth. It is possible to change attachments for each application. Heat-treated material or cemented carbide is used to increase anti-wear property.



Shroud

Large

Protect the bucket bottom lip when the machine works under a hard duty environment.



PARTS LIST

List of parts

UNDERCARRIAGE PARTS

ZX-1,3,5,6
type
1.4~8t

ZX-1,3,5,6
type
10~35t

ZX-1,3,5,6
type
45~87t

Idler

For mini/small-size excavators (ZX-1, 3, 5, 6 type 1.4~8t)

| Applicable Models | Selected Parts No. | Genuine Parts No. |
|-------------------------------------------------------------------------------------------------------------------|--------------------|---------------------|
| ZX14-3, ZX16-3, ZX17U-2, ZX17U-5A, ZX17U-5N, ZX18-3, ZX19-5A, ZX19U-5A | 9312918PS | 9312918 |
| ZX20U, ZX20UR, ZX20U-5A, ZX26U-5A, ZX26U-5N, ZX27-3 | 9314258PS | 9314258 |
| ZX27-2, ZX27U-3, ZX29U-3, ZX30U-3, ZX33U-3, ZX35U-3, ZX38U-3, ZX40UR-3, | 9261429PS | 9261429 |
| ZX27U-3, ZX29U-3, ZX30U-3, ZX33U-3, ZX35U-3, ZX38U-3, ZX40UR-3, ZX30U-5A, ZX33U-5A, ZX35U-5A, ZX38U-5A, ZX40UR-5B | 9269094PS | 9269094 |
| ZX40U, ZX50U, ZX40U-2, ZX50U-2, ZX55UR-2, 40U-3, ZX48U-3, ZX50U-3, ZX52U-3F, ZX55UR-3 | XP00000329PS | 9237507 |
| ZX40U-3, X49U-3U, ZX48U-3, ZX50U-3, ZX52U-3, ZX55UR-3, ZX50U-5A, ZX55U-5B, ZX40U-5A | YD60007381PS | YD60007381, 9318048 |
| ZX55UR, ZX60-5A | 9133370PS | 9133370 |
| ZX60USB-5N, ZX65USB-5A | 9318338PS | 9318338 |
| ZX70, ZX70LC, ZX75UR, ZX80LCK, ZX70-3, ZX70LC-3, ZX75UR-3, ZX75US-5A, ZX80LCK-3, ZX85US-3, ZX85US-5A, ZX70-5A | 9154166PS | 9154166 |

For mid-size excavators (ZX-1, 3, 5, 6 type 10~35t)

| Applicable Models | Selected Parts No. | Genuine Parts No. |
|------------------------------------------------------------------------------------------------------|--------------------|-------------------|
| ZX110-1/3, ZX120-1/3/5B/6 | XP00000237PS | 9273554 |
| ZX160, ZX160LC-3, ZX180LC-1/3, ZX200, ZX200-3(*), ZX230, ZX240-3(*) | XP00000239PS | 9242964 |
| ZX160-5B/6, ZX160LC-5A/5B/5G/6, ZX180-5B, ZX200-3(*), ZX200-5A/5B/5G/6, ZX240-3(*), ZX240-5A/5B/5G/6 | XP00000264PS | 9303011 |
| ZX270, ZX270-3(*), ZX330-3(*) | XP00000243PS | 9245616 |
| ZX270-3(*), ZX280-5B/5G, ZX300-5A/6, ZX330-3(*), ZX330-5A/5B/5G/6 | XP00000265PS | YA60018462 |

For large-size excavators (ZX-1, 3, 5, 6 type 45~87t)

| Applicable Models | Selected Parts No. | Genuine Parts No. |
|-----------------------------------------------------------------------------------|--------------------|-------------------|
| ZX450, ZX480/H, ZX500-1/3, ZX520-3/3F, ZX530-5A, ZX600, ZX650 | 9137270PS | 9137270 |
| ZX450-3/3F, ZX470-3/3F, ZX470LC-5A/5B/5G, ZX480-5B, ZX490-5A | 9244297PS | 9244297 |
| ZX800/3, ZX850-3F, ZX850, ZX870-5B/5G, ZX870H-3/3F/5B/5G, ZX870LC-5B/5G, ZX890-5A | YA00026683PS | YA00026683 |
| ZX650LC-3/5B, ZX670LC-5B/5G, ZX670LCR-3/3F, ZX690-5A | YA00026685PS | YA00026685 |

* Attention : Selected Parts may vary depends on machine model and serial number.
To confirm appropriate Selected Parts for your machine, please contact your local dealer.
Precaution | We recommend that the left and right idlers should be replaced at the same time.

UNDERCARRIAGE PARTS

ZX-1,3,5,6
type
1.4~8t

ZX-1,3,5,6
type
10~35t

ZX-1,3,5,6
type
45~87t

UNDERCARRIAGE PARTS

ZX-1,3,5,6
type
1.4~8t

ZX-1,3,5,6
type
10~35t

ZX-1,3,5,6
type
45~87t

Sprocket

For mini/small-size excavators (ZX-1, 3, 5, 6 type 1.4~8t)

| Applicable Models | Selected Parts No. | Genuine Parts No. |
|---------------------------------------------------------------------------------------------------------------------|--------------------|-------------------|
| ZX14-3, ZX16-3, ZX17U-2, ZX17U-5A, ZX18-3, ZX19-5A | 2056268PS | 2056268 |
| ZX26U-5A, ZX26U-5N | 2054262PS | 2054262 |
| ZX27-3, ZX35, ZX35KD, ZX40UR, ZX30U | 2039666PS | 2039666 |
| ZX27U-3, ZX29U-3, ZX30U-3, ZX33U-3, ZX35U-3, ZX38U-3, ZX40UR-3, ZX30U-5A, ZX33U-5A, ZX35U-5A, ZX38U-5A, ZX40UR-5B | 2055869PS | 2055869 |
| ZX30, ZX27U-2, ZX27U-3, ZX29U-3, ZX30U-3, ZX33U-3, ZX35U-3, ZX38U-3, ZX40UR-3, ZX30U-2, ZX35U-2, ZX30UR-2, ZX40UR-2 | 1032265PS | 1032265 |
| ZX40U-3, ZX48U-3, ZX50U-3, ZX52U-3, ZX55UR-3, ZX50U-5A, ZX55U-5B, ZX40U-5A, ZX55UR-5B | 1036618PS | 1036618 |
| ZX60-5A, ZX60-5G, ZX60USB-3, ZX65USB-3F, ZX60USB-5N, ZX65USB-5A, ZX68USR-5A | 2054155PS | 2054155 |
| ZX70-3, ZX70LC-3, ZX75US-5A, ZX80LCK-3, ZX85US-3, ZX85USB-5A | 1033840PS | 1033840 |
| ZX70-5A, ZX70LC-5A, ZX70-5G, ZX70LC-5G | YD00002183PS | YD00002183 |

For mid-size excavators (ZX-1, 3, 5, 6 type 10~35t)

| Applicable Models | Selected Parts No. | Genuine Parts No. |
|---------------------------------------------------------|--------------------|-------------------|
| ZX110-1/3, ZX120-1/3 | XP00000228PS | 1010325 |
| ZX120-5B/6 | XP00000266PS | 1028027 |
| ZX160, ZX160LC-3(*), ZX180LC-1/3, ZX180-5B, ZX200 | XP00000229PS | 1018740 |
| ZX160-5B/6, ZX160LC-3(*)/5A/5B/5G/6, ZX200-3/5A/5B/5G/6 | XP00000230PS | 1033091 |
| ZX230 | XP00000231PS | 1010203 |
| ZX240-3/5A/5B/5G/6 | XP00000232PS | 1032489 |
| ZX270, ZX330 | XP00000234PS | 1022168 |
| ZX270-3, ZX280-5B/5G, ZX300-5A/6 | XP00000233PS | 1033227 |
| ZX330-3/5A/5B/5G/6 | XP00000235PS | 1033163 |

For large-size excavators (ZX-1, 3, 5, 6 type 45~87t)

| Applicable Models | Selected Parts No. | Genuine Parts No. |
|------------------------------------------------------------------------------------------------|--------------------|-------------------|
| ZX450-3/3F, ZX460LCH, ZX470-3/3F/5B/5G, ZX470LC-5A/5B/5G, ZX480LCK-5B, ZX490H-5A | 1010956PS | 1010956 |
| ZX450MT, ZX480MT, ZX500LC/3/3F, ZX520-3/3F/5B, ZX530LCH-5A, ZX600, ZX650 | 4639374PS | 4639374 |
| ZX650LC-3/5B, ZX670LCH-3/3F/5B/5G, ZX690LCH-5A, ZX800, ZX850-3/3F, ZX870H-3/3F/5B/5G, ZX890-5A | YA00001980PS | YA00001980 |

* Attention : Selected Parts may vary depends on machine model and serial number.
To confirm appropriate Selected Parts for your machine, please contact your local dealer.
Precaution | We recommend that the left and right sprockets should be replaced at the same time.

Upper roller

For mini/small-size excavators (ZX-1, 3, 5, 6 type 1.4~8t)

| Applicable Models | Selected Parts No. | Genuine Parts No. |
|----------------------------------------------------------------------------------------------------------------------------------------|--------------------|-------------------|
| ZX60-5A, ZX60-5G | 4679884PS | 4679884, 4392416 |
| ZX30U, ZX27U-2, ZX27U-3, ZX29U-3, ZX30U-3, ZX33U-3, ZX35U-3, ZX38U-3, ZX40UR-3, ZX30U-2, ZX35U-2, ZX30UR-2, ZX40UR-2, ZX35B | 9237948PS | 9237948 |
| ZX40U, ZX50U, ZX40U-2, ZX50U-2, ZX55UR-2, ZX40U-3, ZX48U-3, ZX50U-3, ZX52U-3, ZX55UR-3, ZX40U-A, ZX50U-A | 9239529PS | 9239529 |
| ZX27U-3, ZX30U-3, ZX33U-3, ZX30U-5A, ZX33U-5A, ZX35U-5A, ZX38U-5A, ZX40UR-5B, ZX40U-3, ZX48U-3, ZX50U-3, ZX55UR-3, ZX40U-5A, ZX55UR-5B | 4718355PS | 4718355 |
| ZX70, ZX75UR, ZX80LCK, ZX70-3, ZX75UR-3, ZX75UR-5B, ZX80LCK-3, ZX85US-3, ZX85US-5A, ZX70-5A, ZX85USBL-3, | XP00000362PS | 9153288 |

For mid-size excavators (ZX-1, 3, 5, 6 type 10~35t)

| Applicable Models | Selected Parts No. | Genuine Parts No. |
|-----------------------------------------------------------------------------------------------|--------------------|-------------------|
| ZX110-1/3, ZX120-1/3/5B/6 | XP00000257PS | 9160680 |
| ZX160, ZX180LC, ZX200, ZX230 | XP00000303PS | 9134245 |
| ZX160-5B/6, ZX160LC-3/5A/5B/5G/6, ZX180LC-3, ZX180-5B, ZX200-3/5A/5B/5G/6, ZX240-3/5A/5B/5G/6 | XP00000259PS | 9234984 |
| ZX270, ZX330 | XP00000304PS | 9257022 |
| ZX270-3, ZX280-5B/5G, ZX300-5A/6, ZX330-3/5A/5B/5G/6 | XP00000261PS | 9245117 |

For large-size excavators (ZX-1, 3, 5, 6 type 45~87t)

| Applicable Models | Selected Parts No. | Genuine Parts No. |
|------------------------------------------------------------------------------|--------------------|-------------------|
| ZX450, ZX450LC, ZX460LCH, ZX470-5G/5A/5G, ZX490H-5A, ZX490-5A | 9099140PS | 9099140 |
| ZX450MT, ZX480MT, ZX500LC-3/3F, ZX520LCH-3/3F/5B, ZX530LCH-5A, ZX600, ZX650H | 9109492PS | 9109492 |
| ZX450-3/3F, ZX470-5B | 9250478PS | 9250478 |
| ZX650-3, ZX670-3/3F/5B/5G, ZX690-5A, ZX800 | 9078675PS | 9078675 |
| ZX850-3/3F, ZX870-5B/5G, ZX890-5A | 4638433PS | 4638433 |

* Attention : Selected Parts may vary depends on machine model and serial number.
To confirm appropriate Selected Parts for your machine, please contact your local dealer.
Precaution | We recommend that the left and right upper rollers should be replaced at the same time.

UNDERCARRIAGE PARTS

ZX-1,3,5,6
type
1.4~8t

ZX-1,3,5,6
type
10~35t

ZX-1,3,5,6
type
45~87t

UNDERCARRIAGE PARTS

ZX-1,3,5,6
type
1.4~8t

ZX-1,3,5,6
type
10~35t

ZX-1,3,5,6
type
45~87t

Lower roller

For mini/small-size excavators (ZX-1, 3, 5, 6 type 1.4~8t)

| Applicable Models | Selected Parts No. | Genuine Parts No. |
|--------------------------------------------------------------------------------------------------------------------------------------------------------------------|--------------------|------------------------|
| ZX14-3, ZX14-3CKD, ZX16-3, ZX17U-2, ZX17U-5A, ZX17U-5N, ZX18-3, ZX19-5A, ZX19U-5A | YD00004084PS | YD00004084 |
| ZX30U, ZX35U-A, ZX27U-2, ZX27U-3, ZX29U-3, ZX30U-3, ZX33U-3, ZX35U-3, ZX38U-3, ZX40UR-3, ZX30U-2, ZX35U-2, ZX35U-2U, ZX30UR-2, ZX40UR-2 | 9237937PS | 9237937 |
| ZX30U, ZX29U-3, ZX30U-3, ZX33U-3, ZX35U-3, ZX38U-3, ZX40UR-3, ZX30U-5A, ZX33U-5A, ZX35U-5A, ZX38U-5A | YD00008528PS | YD00008528, YD00005461 |
| ZX50, ZX40U, ZX50U, ZX40U-2, ZX50U-2, ZX40U-3, ZX48U-3, ZX48U-3F, ZX50U-3, ZX52U-3, ZX55UR-3, ZX50U-5A, ZX55U-5B, ZX40U-5A, ZX40U-5B, ZX55USR-5A, ZX40U-A, ZX50U-A | YD00010174PS | YD00010174 |
| ZX40, ZX55UR, ZX40U, ZX50U, ZX60-HCMC, ZX60-5A, ZX60-5G, ZX40U-A, ZX50U-A | 4357785PS | 4357785 |
| ZX60USB-365USB-3F, ZX60USB-5N, ZX65USB-5A, ZX68USR-5A | 4671711PS | 4671711 |
| ZX75US-5A, ZX85US-5A | YD00003751PS | 9182805, YD00003751 |
| ZX70, ZX70-5A | 9170017PS | 9170017 |

For mid-size excavators (ZX-1, 3, 5, 6 type 10~35t)

| Applicable Models | Selected Parts No. | Genuine Parts No. |
|----------------------------------------------------------------------------------------------------------|--------------------|-------------------|
| ZX110-1/3, ZX120-1/3/5B/6 | XP00000253PS | 9132600 |
| ZX160/5B/6, ZX160LC-3/5A/5B/5G/6, ZX180LC-1/3, ZX180-5B, ZX200-1/3/5A/5B/5G/6, ZX230, ZX240-3/5A/5B/5G/6 | XP00000254PS | 9184516 |
| ZX270, ZX330 | XP00000263PS | 9168173 |
| ZX270-3, ZX280-5B/5G, ZX300-5A/6, ZX330-3/5A/5B/5G/6 | XP00000256PS | 9253782 |

For large-size excavators (ZX-1, 3, 5, 6 type 45~87t)

| Applicable Models | Selected Parts No. | Genuine Parts No. |
|-------------------------------------------------------------------------------------------|--------------------|-------------------|
| ZX450, ZX450-3/3F, ZX470H-3/3F/5B, ZX470LC-5A/5B/5G | YA00005129PS | YA00005129 |
| ZX450, ZX480, ZX500-3, ZX520LCH-3/5B, ZX530LCH-5A, ZX600ZX, ZX650H | 4473719PS | 4473719 |
| ZX650LC-3, ZX670LCR-3/3F/5B/5G, ZX690LCH-5A, ZX800/3, ZX850-3F, ZX870H-5G/5B/5G, ZX890-5A | 4473720PS | 4473720 |

* Attention : Selected Parts may vary depends on machine model and serial number.
To confirm appropriate Selected Parts for your machine, please contact your local dealer.
Precaution | We recommend that the left and right lower rollers should be replaced at the same time.

Track link

For mini/small-size excavators (ZX-1, 3, 5, 6 type 1.4~8t)

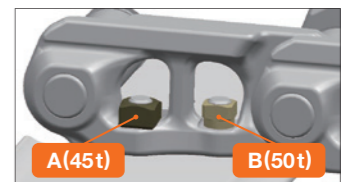
| Applicable Models | Selected Parts No. | Number of Links | Genuine Parts No. |
|------------------------------------------------------------------------------|--------------------|-----------------|---------------------|
| ZX27-3 | 9302915PS | 41 | 9302915 |
| ZX27U-3, ZX29U-3 | YD00000165PS | 40 | YD00000165 |
| ZX30U-3, ZX33U-3, ZX35U-3, ZX38U-3, ZX40UR-3, ZX30U-5A, ZX33U-5A, ZX35U-5A | 4736279PS | 44 | 4736279 |
| ZX35U-A, ZX30U-3, ZX30U-3U, ZX35U-3 | 9187987PS | 44 | 9187987 |
| ZX40U-3, ZX48U-3, ZX50U-3, ZX52U-3, ZX55UR-3 | YD00001544PS | 38 | YD00001544 |
| ZX40U-3, ZX48U-3, ZX50U-3, ZX52U-3, ZX50U-5B, ZX40U-5A, ZX55UR-5B | YD00007403PS | 39 | YD00007403, 4720489 |
| ZX48U-5A, ZX55U-5A, ZX60-5A, ZX60-5G | 9317734PS | 38 | 9317734, 9143849 |
| ZX70, ZX70-3, ZX80LCK-3, ZX70-5A | 9156478PS | 39 | 9156478 |
| ZX70LC, ZX75UR, ZX80LCK, ZX70-3, ZX80LCK-3, ZX85US-3, ZX70LC-5G, ZX85USBLC-3 | 9163908PS | 39 | 9163908 |

For mid-size excavators (ZX-1, 3, 5, 6 type 10~35t)

| Applicable Models | Selected Parts No. | Number of Links | Genuine Parts No. |
|-----------------------------------------------------------------------------------------------------------------|--------------------|-----------------|-------------------|
| ZX110-1/3 | XP00000267PS | 41 | 9179404 |
| ZX120-1/3/5B/6, ZX135US-1/3/5A/5B/6, ZX135UR | XP00000236PS | 44 | 9178845 |
| ZX130LCN-1/3/5B/6 | XP00000298PS | 46 | 9229755 |
| ZX110M, ZX130L, ZX130MT, ZX135USL, ZX138MF | XP00000296PS | 42 | 9200212 |
| ZX160 | XP00000299PS | 43 | 9200213 |
| ZX180LC, ZX200 | XP00000301PS | 46 | 9200210 |
| ZX200LC | XP00000302PS | 49 | 9200211 |
| ZX110M-3, ZX130L-3/5B, ZX135USL-3/5B | XP00000297PS | 42 | 9282299 |
| ZX160-5B/6, ZX160LC-3/5A/5B/5G/6 | XP00000300PS | 43 | 9257122 |
| ZX180-5B, ZX180LC-3/5B/5G, ZX190LC-6, ZX200-3/5A/5B/5G/6, ZX225US-3/5A/5B/6, ZX225USR-3/5B/6, X225US, ZX225USR | XP00000244PS | 46 | 9248706 |
| ZX200LC-3/5A/5B/5G/6, ZX225USLC-3/5A/5B/6, ZX225USRL-3/5B/6, ZX225USRLC-3/5B/6, ZX210L-3, ZX225USLC, ZX225USRLC | XP00000245PS | 49 | 9250500 |
| ZX230, ZX240-3/5A/5B/5G/6 | XP00000248PS | 47 | 9250491 |
| ZX230LC, ZX240LC-3/5A/5B/5G/6, ZX250L-3 | XP00000249PS | 51 | 9250497 |
| ZX270-1/3, ZX280-5B/5G, ZX300-5A/6, ZX330-1/3/5A/5B/5G/6, ZX350-5B | XP00000251PS | 45 | 9248209 |
| ZX270LC, ZX280LC-3, ZX290LC-5B, ZX300LC-6, ZX330LC-1/3/5A/5B/5G/6, ZX350L-3 | XP00000252PS | 48 | 9251026 |

For large-size excavators (ZX-1, 3, 5, 6 type 45~87t)

| Applicable Models | Selected Parts No. | Number of Links | Genuine Parts No. |
|----------------------------------------------------------------------|--------------------|-----------------|-------------------|
| ZX450-3/3F, ZX470H-3/5B/5G, ZX490H-5A | 9251216PS | - | 9251216 |
| ZX470LC-5A/5B/5G, ZX490-5A | 9251219PS | - | 9251219 |
| ZX500LC-3/3F, ZX520LCH-3/3F/5B, ZX530LCH-5A | 9259189PS | - | 9259189 |
| ZX650LC-3, ZX670LCR-3/3F/5B/5G, ZX690LCH-5A, ZX850-3/3F/5B, ZX870-5G | 9252882PS | - | 9252882 |
| ZX870-5B/5G, ZX890-5A | 9252885PS | - | 9252885 |



* Attention :
 • When replacing track-link of 50t, it must be used genuine nut of 45t to tighten bolt properly. Because if it's genuine nut of 50t, it can't be tighten/hold since width across the flats size is narrow. The picture shows actual size. (A : Left side [45t] / B : Right side [50t])
 • We only set Selected Parts master;pin for 45t (XP0000438PS). And for other classes, please use genuine master;pin.
 Precaution | We recommend that the left and right track links should be replaced at the same time.

UNDERCARRIAGE PARTS

ZX-1,3,5,6 type
1.4~8t

ZX-1,3,5,6 type
10~35t

ZX-1,3,5,6 type
45~87t

UNDERCARRIAGE PARTS

ZX-1,3,5,6 type
1.4~8t

ZX-1,3,5,6 type
10~35t

ZX-1,3,5,6 type
45~87t

Track;Link (Unit)

We offer Selected Parts track link inner parts to cope with necessary small parts for Selected Parts track link assy.

* These inner parts are not compatible with genuine track link.



| Representative Models | Selected Parts Track Link (Unit) Part No. | Description | Selected Parts Track Link Assy Parts No. |
|-----------------------|-------------------------------------------|----------------|------------------------------------------|
| ZX30U-3 | XP00000427PS | TRACK-LINK*1 | 9302915PS |
| | XP00000328PS | BUSHING | |
| | XP00000398PS | PIN | |
| ZX30U-3 | XP00000413PS | PIN;MASTER | YD00000165PS |
| | XP00000427PS | TRACK-LINK*1 | |
| | XP00000328PS | BUSHING | |
| ZX30U-3 | XP00000398PS | PIN | 4736279PS |
| | XP00000413PS | PIN;MASTER | |
| | XP00000427PS | TRACK-LINK*1 | |
| ZX30U-3 | XP00000328PS | BUSHING | 9187987PS |
| | XP00000398PS | PIN | |
| | XP00000413PS | PIN;MASTER | |
| ZX30U-3 | XP00000428PS | TRACK-LINK*1 | 9187987PS |
| | XP00000328PS | BUSHING | |
| | XP00000398PS | PIN | |
| ZX30U-3 | XP00000413PS | PIN;MASTER | 9187987PS |
| | XP00000428PS | TRACK-LINK*1 | |
| | XP00000328PS | BUSHING | |
| ZX40U-3 | XP00000457PS | TRACK-LINK*2 | YD00001544PS |
| | XP00000423PS | BUSHING | |
| | XP00000399PS | PIN | |
| ZX40U-3 | XP00000414PS | PIN;MASTER | YD00001544PS |
| | XP00000418PS | RING | |
| | XP00000420PS | SPACER | |
| ZX52U-3 | XP00000458PS | TRACK-LINK*2 | YD00007403PS |
| | XP00000424PS | BUSHING | |
| | XP00000400PS | PIN | |
| ZX52U-3 | XP00000415PS | PIN;MASTER | YD00007403PS |
| | XP00000418PS | RING | |
| | XP00000420PS | SPACER | |
| ZX60-5G | XP00000459PS | TRACK-LINK*2 | 9317734PS |
| | XP00000425PS | BUSHING | |
| | XP00000401PS | PIN | |
| ZX60-5G | XP00000416PS | PIN;MASTER | 9317734PS |
| | XP00000418PS | RING | |
| | XP00000420PS | SPACER | |
| ZX70-3 | XP00000460PS | TRACK-LINK*2 | 9156478PS |
| | XP00000402PS | PIN | |
| | XP00000412PS | BUSHING;MASTER | |
| ZX70-3 | XP00000417PS | PIN;MASTER | 9156478PS |
| | XP00000419PS | RING | |
| | XP00000421PS | SPACER | |
| ZX70-3 | XP00000422PS | COLLAR | 9156478PS |
| | XP00000422PS | COLLAR | |
| | XP00000422PS | COLLAR | |

| Representative Models | Selected Parts Track Link (Unit) Part No. | Description | Selected Parts Track Link Assy Parts No. |
|-----------------------|-------------------------------------------|----------------|------------------------------------------|
| ZX70-3 | XP00000460PS | TRACK-LINK*2 | 9163908PS |
| | XP00000402PS | PIN | |
| | XP00000412PS | BUSHING;MASTER | |
| ZX70-3 | XP00000417PS | PIN;MASTER | 9163908PS |
| | XP00000419PS | RING | |
| | XP00000421PS | SPACER | |
| ZX70-3 | XP00000422PS | COLLAR | 9163908PS |
| | XP00000422PS | COLLAR | |
| | XP00000422PS | COLLAR | |
| ZX120-3 | XP00000453PS | TRACK-LINK*2 | XP00000267PS |
| | XP00000369PS | PIN | |
| | XP00000383PS | BUSHING;MASTER | |
| ZX120-3 | XP00000386PS | PIN;MASTER | XP00000267PS |
| | XP00000389PS | RING | |
| | XP00000392PS | SPACER | |
| ZX120-3 | XP00000392PS | SPACER | XP00000267PS |
| | XP00000395PS | COLLAR | |
| | XP00000453PS | TRACK-LINK*2 | |
| ZX120-3 | XP00000369PS | PIN | XP00000236PS |
| | XP00000383PS | BUSHING;MASTER | |
| | XP00000386PS | PIN;MASTER | |
| ZX120-3 | XP00000389PS | RING | XP00000236PS |
| | XP00000392PS | SPACER | |
| | XP00000395PS | COLLAR | |
| ZX120-3 | XP00000453PS | TRACK-LINK*2 | XP00000298PS |
| | XP00000369PS | PIN | |
| | XP00000383PS | BUSHING;MASTER | |
| ZX120-3 | XP00000386PS | PIN;MASTER | XP00000298PS |
| | XP00000389PS | RING | |
| | XP00000392PS | SPACER | |
| ZX120-3 | XP00000392PS | SPACER | XP00000298PS |
| | XP00000395PS | COLLAR | |
| | XP00000453PS | TRACK-LINK*2 | |
| ZX200 | XP00000454PS | TRACK-LINK*2 | XP00000296PS |
| | XP00000370PS | PIN | |
| | XP00000384PS | BUSHING;MASTER | |
| ZX200 | XP00000387PS | PIN;MASTER | XP00000296PS |
| | XP00000387PS | PIN;MASTER | |
| | XP00000390PS | RING | |
| ZX200 | XP00000393PS | SPACER | XP00000296PS |
| | XP00000393PS | SPACER | |
| | XP00000396PS | COLLAR | |

| Representative Models | Selected Parts Track Link (Unit) Part No. | Description | Selected Parts Track Link Assy Parts No. |
|-----------------------|-------------------------------------------|----------------|------------------------------------------|
| ZX200 | XP00000454PS | TRACK-LINK*2 | XP00000299PS |
| | XP00000370PS | PIN | |
| | XP00000384PS | BUSHING;MASTER | |
| | XP00000387PS | PIN;MASTER | |
| | XP00000390PS | RING | |
| | XP00000393PS | SPACER | |
| ZX200 | XP00000454PS | TRACK-LINK*2 | XP00000301PS |
| | XP00000370PS | PIN | |
| | XP00000384PS | BUSHING;MASTER | |
| | XP00000387PS | PIN;MASTER | |
| | XP00000390PS | RING | |
| | XP00000393PS | SPACER | |
| ZX200 | XP00000454PS | TRACK-LINK*2 | XP00000302PS |
| | XP00000370PS | PIN | |
| | XP00000384PS | BUSHING;MASTER | |
| | XP00000387PS | PIN;MASTER | |
| | XP00000390PS | RING | |
| | XP00000393PS | SPACER | |
| ZX200-3 | XP00000455PS | TRACK-LINK*2 | XP00000297PS |
| | XP00000370PS | PIN | |
| | XP00000384PS | BUSHING;MASTER | |
| | XP00000387PS | PIN;MASTER | |
| | XP00000390PS | RING | |
| | XP00000393PS | SPACER | |
| ZX200-3 | XP00000455PS | TRACK-LINK*2 | XP00000300PS |
| | XP00000370PS | PIN | |
| | XP00000384PS | BUSHING;MASTER | |
| | XP00000387PS | PIN;MASTER | |
| | XP00000390PS | RING | |
| | XP00000393PS | SPACER | |
| ZX200-3 | XP00000455PS | TRACK-LINK*2 | XP00000244PS |
| | XP00000370PS | PIN | |
| | XP00000384PS | BUSHING;MASTER | |
| | XP00000387PS | PIN;MASTER | |
| | XP00000390PS | RING | |
| | XP00000393PS | SPACER | |
| ZX200-3 | XP00000455PS | TRACK-LINK*2 | XP00000245PS |
| | XP00000370PS | PIN | |
| | XP00000384PS | BUSHING;MASTER | |
| | XP00000387PS | PIN;MASTER | |
| | XP00000390PS | RING | |
| | XP00000393PS | SPACER | |
| ZX200-3 | XP00000455PS | TRACK-LINK*2 | XP00000248PS |
| | XP00000370PS | PIN | |
| | XP00000384PS | BUSHING;MASTER | |
| | XP00000387PS | PIN;MASTER | |
| | XP00000390PS | RING | |
| | XP00000393PS | SPACER | |

| Representative Models | Selected Parts Track Link (Unit) Part No. | Description | Selected Parts Track Link Assy Parts No. |
|-----------------------|-------------------------------------------|----------------|------------------------------------------|
| ZX200-3 | XP00000455PS | TRACK-LINK*2 | XP00000249PS |
| | XP00000370PS | PIN | |
| | XP00000384PS | BUSHING;MASTER | |
| | XP00000387PS | PIN;MASTER | |
| | XP00000390PS | RING | |
| | XP00000393PS | SPACER | |
| ZX330-3 | XP00000456PS | TRACK-LINK*2 | XP00000251PS |
| | XP00000371PS | PIN | |
| | XP00000385PS | BUSHING;MASTER | |
| | XP00000388PS | PIN;MASTER | |
| | XP00000391PS | RING | |
| | XP00000394PS | SPACER | |
| ZX330-3 | XP00000456PS | TRACK-LINK*2 | XP00000252PS |
| | XP00000371PS | PIN | |
| | XP00000385PS | BUSHING;MASTER | |
| | XP00000388PS | PIN;MASTER | |
| | XP00000391PS | RING | |
| | XP00000394PS | SPACER | |

*1 : Track Link is sub-assy with shoe

*2 : Track Link is sub-assy

GET PARTS

ZX-1,3,5,6
type
1.4~8t

ZX-1,3,5,6
type
12~35t

ZX-1,3,5,6
type
45~87t

GET PARTS

ZX-1,3,5,6
type
1.4~8t

ZX-1,3,5,6
type
12~35t

ZX-1,3,5,6
type
45~87t

GET parts

For mini/small-size excavators (ZX-1, 3, 5, 6 type 1.4~8t)

| Model Class | Selected Parts No. | Description | Remarks |
|-------------|--------------------|---------------|----------|
| ZX10-40 | 4106786PS | ADAPTER;TOOTH | 18S type |
| | 4417532PS | ADAPTER;TOOTH | 18S type |
| | 4626441PS | CUTTER;SIDE | - |
| | 4626442PS | CUTTER;SIDE | - |
| | 4339868PS | PIN;LOCK | 18-20PN |
| | 4339865PS | POINT;TOOTH | 18S type |
| ZX40-60 | 4339867PS | RUBBER;LOCK | 18-20LK |
| | 4245518PS | ADAPTER;TOOTH | 18S |
| | 3066997PS | CUTTER;SIDE | - |
| | 3066998PS | CUTTER;SIDE | - |
| | 4622021PS | CUTTER;SIDE | - |
| | 4626430PS | CUTTER;SIDE | - |

| Model Class | Selected Parts No. | Description | Remarks |
|-------------|--------------------|---------------|------------|
| EX10-20 | 4330947PS | ADAPTER;TOOTH | 1610T-13V |
| | 4357232PS | PIN;LOCK | V13PN |
| | 4353469PS | POINT;TOOTH | V13S |
| | XP00000320PS | POINT;TOOTH | V13SYL |
| ZX70-80 | 4047569PS | ADAPTER;TOOTH | A1306-25 |
| | 4135495PS | ADAPTER;TOOTH | 22S type |
| | 3053595PS | CUTTER;SIDE | 285A-7-3-5 |
| | 3053596PS | CUTTER;SIDE | 285A-7-3-6 |
| | 4135497PS | PIN;LOCK | 22PN |
| | 4135496PS | POINT;TOOTH | 22S |
| | XP00000307PS | POINT;TOOTH | 25S |
| | 4135498PS | RUBBER;LOCK | 22LK |

For large-size excavators (ZX-1, 3, 5, 6 type 45~87t)

| Model Class | Selected Parts No. | Description | Remarks |
|-------------|--------------------|---------------|-----------|
| ZX450-470 | 4242623PS | ADAPTER;TOOTH | 4756-40 |
| | 4350767PS | ADAPTER;TOOTH | 6610T-V51 |
| | 1010517PS | CUTTER;SIDE | - |
| | 1010518PS | CUTTER;SIDE | - |
| | 4350782PS | PIN;LOCK | V51PN |
| | 4350781PS | POINT;TOOTH | V51SY1 |
| | XP00000327PS | POINT;TOOTH | V51RYL |
| | 4209167PS | SHROUD | - |
| | 4435856PS | SHROUD | BSH-B500R |
| | 4435857PS | SHROUD | BSH-B500L |
| ZX600-670 | 4660436PS | ADAPTER;TOOTH | 7110T-V59 |
| | 4337184PS | SHROUD | SH6630 |

| Model Class | Selected Parts No. | Description | Remarks |
|-------------|--------------------|---------------|-----------|
| ZX850-870 | 4472321PS | ADAPTER;TOOTH | 6610T-V59 |
| | 4472842PS | ADAPTER;TOOTH | 8110T-V61 |
| | 2016745PS | CUTTER;SIDE | - |
| | 2016746PS | CUTTER;SIDE | - |
| | 4397063PS | PIN;LOCK | V61PN |
| | 4472883PS | PIN;LOCK | V59PN |
| | 4255718PS | POINT;TOOTH | V61RY |
| | 4472424PS | POINT;TOOTH | V59RYL |
| | 4206421PS | SHROUD | SH8130-1 |
| | 4262453PS | SHROUD | BSH730A |
| | 4386911PS | SHROUD | - |

For mid-size excavators (ZX-1, 3, 5, 6 type 12~35t)

| Model Class | Selected Parts No. | Description | Remarks |
|-------------|--------------------|---------------|------------------|
| ZX120-130 | 4366118PS | ADAPTER;TOOTH | 20Y-70-14520 |
| | 4425500PS | ADAPTER;TOOTH | FT3210T-30 |
| | 2015428PS | CUTTER;SIDE | - |
| | 2015429PS | CUTTER;SIDE | - |
| | XP00000262PS | PIN;LOCK | 25-30PN |
| | XP00000305PS | POINT;TOOTH | 30S |
| ZX240 | XP00000306PS | RUBBER;LOCK | 25-30LK |
| | 4380336PS | ADAPTER;TOOTH | 207-939-5120(45) |
| | 4437208PS | ADAPTER;TOOTH | 3809-40ZX |
| | 2021232PS | CUTTER;SIDE | - |
| | 2021233PS | CUTTER;SIDE | - |
| | 4380344PS | PIN | 09244-02516 |
| | 4512366PS | PIN;LOCK | 40PN-P |
| | 4380343PS | POINT;TOOTH | 207-70-14151 |
| | 4512365PS | POINT;TOOTH | 40S |
| | XP00000324PS | POINT;TOOTH | PC300TL |
| ZX380-400 | XP00000325PS | POINT;TOOTH | PC300RC-N |
| | 4617810PS | ADAPTER;TOOTH | 5610T-V43 |
| | 4422932PS | PIN;LOCK | V43PN |
| | 4471407PS | POINT;TOOTH | V43RP |
| | 4670449PS | SHROUD | - |

| Model Class | Selected Parts No. | Description | Remarks |
|-------------|--------------------|---------------|--------------|
| ZX200-220 | 4363714PS | ADAPTER;TOOTH | 20Y-934-2211 |
| | 4383046PS | ADAPTER;TOOTH | V29 |
| | 4414271PS | ADAPTER;TOOTH | F3610T-35 |
| | 2014503PS | CUTTER;SIDE | - |
| | 2014504PS | CUTTER;SIDE | - |
| | 4364125PS | PIN | 09244-02496 |
| | 4383069PS | PIN | V29PN |
| | 4501627PS | PIN;LOCK | 35PN |
| | 4364121PS | POINT;TOOTH | 205-70-19570 |
| | 4427919PS | POINT;TOOTH | 35S |
| ZX330-350 | XP00000321PS | POINT;TOOTH | 205-70-19570 |
| | XP00000322PS | POINT;TOOTH | PC200RC-N |
| | XP00000323PS | POINT;TOOTH | V29SHV |
| | 4501625PS | RUBBER;LOCK | 35-40LK |
| | 4383462PS | ADAPTER;TOOTH | - |
| | 4400249PS | ADAPTER;TOOTH | H4110T-V33 |
| | 4441323PS | ADAPTER;TOOTH | 40S |
| | 4383465PS | PIN;LOCK | V39PN |
| ZX330-350 | 4400252PS | PIN;LOCK | V33PN |
| | 4400253PS | POINT;TOOTH | V39RP |
| | XP00000326PS | POINT;TOOTH | V33SL |
| | | | |

Before using a machine with a telematics communication system, please make sure that the satellite communication system complies with local regulations, safety standards and legal requirements. If not so, please make modifications accordingly.

These specifications are subject to change without notice.
Illustrations and photos show the standard models, and may or may not include optional equipment, accessories, and all standard equipment with some differences in color and features.
Before use, read and understand the Operator's Manual for proper operation.

