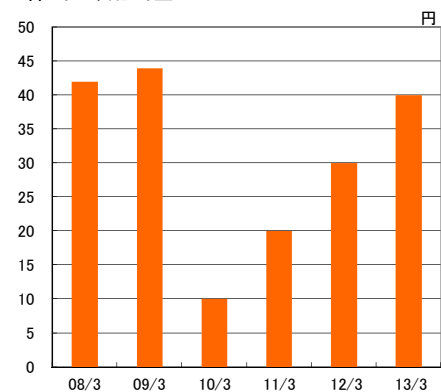


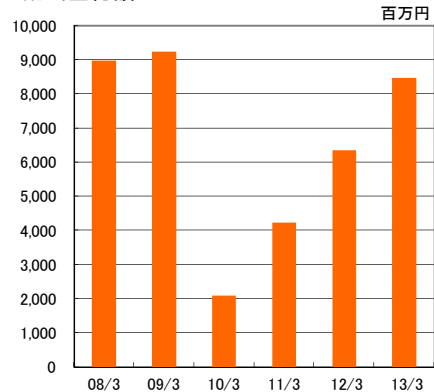
## 配当状況

	03/3	04/3	05/3	06/3	07/3	08/3	09/3	10/3	11/3	12/3	13/3
1株当たり配当金(円)	7.00	11.00	14.00	18.00	28.00	42.00	44.00	10.00	20.00	30.00	40.00
配当金総額(百万円)	1,074	1,923	2,728	3,503	5,452	8,986	9,244	2,089	4,229	6,350	8,475
配当性向(%)	27.0	15.1	15.4	14.5	14.9	15.5	51.3	51.7	38.1	27.6	36.1
自己資本配当率(%)	1.5	2.2	2.3	2.4	3.1	3.5	3.1	0.7	1.4	2.0	2.5
株主数(人)	10,566	8,913	11,861	18,234	21,422	38,981	47,493	52,692	53,977	62,737	54,377

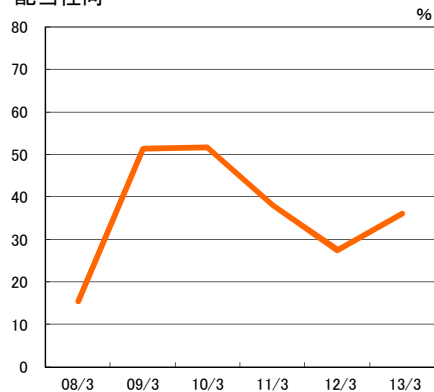
1株当たり配当金



配当金総額



配当性向



自己資本配当率

