

REMANUFACTURED COMPONENTS

HITACHI

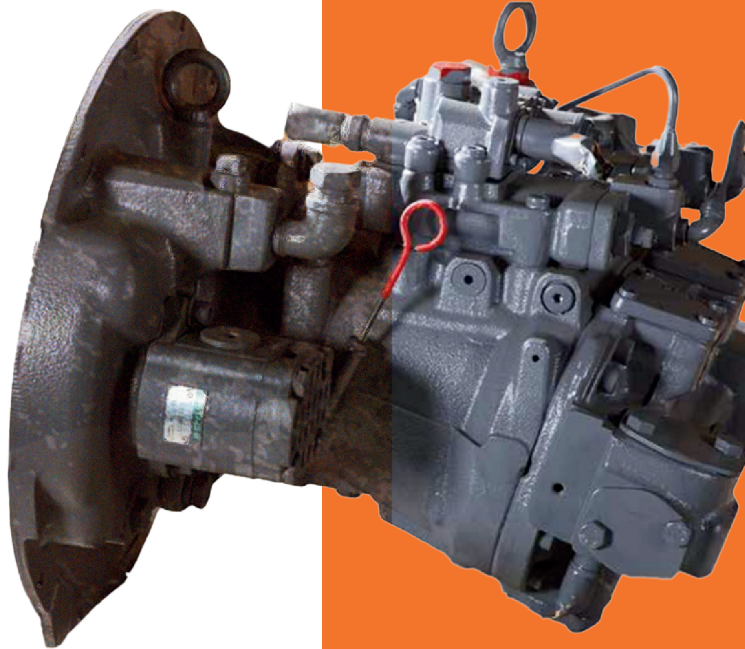
Reliable Solutions

Hitachi Construction Machinery Group

LANDCROS

Japanese Excellence—Reliable Solutions

Which is a better way?



SCAN THE QR CODE
FOR ANSWER

Keep your machine running with

Reman Components



12 months
warranty
by HCMM



Quality
same as
new



Reduced
downtime



Environment
friendly



Tested to
stringent
standards

Hitachi Construction Machinery

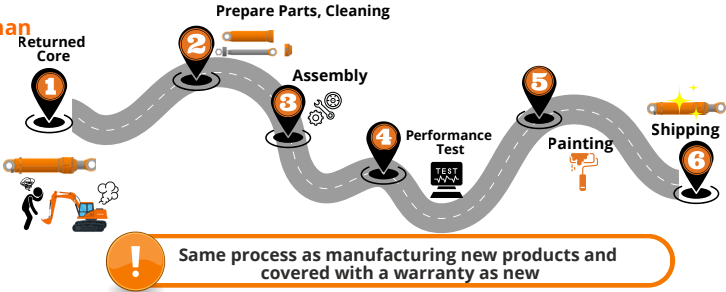
REMANUFACTURED

LANDCROS Japanese Excellence—Reliable Solutions

Product Line Up

Machine Model	Item Description	Parts No.	Genuine Parts Price (RM)	Non-Core Return Price (RM)	Core Return Price(RM)
ZX138MF ZX120	Main Pump	9227923PI	71,351	30,800	26,200
	Main Pump	YB60000369PI	59,519	30,500	26,000
	Swing Motor	9196961PI	27,273	15,000	12,800
	Bucket Cylinder	9257711PI	30,452	16,100	13,800
	Center Joint	9195313PI	15,258	7,200	6,100
ZX110MF-5G ZX138MF-5G ZX138MF	Travel Device	9198739PI	81,818	45,000	41,000
ZX120	Control Valve	9207699PI	109,229	-	36,600
ZX138MF-5G	Control Valve	YB60000830PI	112,027	-	42,000
ZX200-5G ZX210F-5G ZX210LC-5G ZX210MF-5G	Main Pump	YB60001225PI	118,695	47,400	40,600
	Travel Motor	9258325PI	44,834	19,400 17,000	16,400 13,500
	Swing Motor	4610138PI	30,216	15,400	13,200
	Bucket Cylinder	YA60039380PI	40,857	18,400	15,900
	Arm Cylinder	YA60039379PI	53,130	24,300	21,500
	Boom Cylinder (R)	YA60039377PI	44,187	19,700	17,100
	Boom Cylinder (L)	YA60039378PI	44,187	19,700	17,100
	Center Joint	9107265PI	17,595	8,700	7,500
	Travel Device	YB60003495PI	127,007	52,900 29,500	45,300 29,500
	Swing Device	9263407PI	76,815	37,400	32,100
ZX200-5G	Engine	4726598PU	213,200	-	70,000
	Control Valve	YA00000703PI	124,483	-	50,000
ZX200-3	Control Valve	4606144PI	156,761	-	50,000
ZX330-5G, ZX330LC-5G ZX350H-5G ZX350LCH-5G	Main Pump	YB60001215PI	152,588	61,600	52,700
	Travel Motor	9281842PI	76,827	27,800	23,700
	Swing Motor	4616985PI	38,775	20,100	17,100
	Bucket Cylinder	9312268PI	46,616	24,800	21,400
	Center Joint	9107265PI	17,595	8,700	7,500
	Arm Cylinder	9312267PI	77,000	45,100	38,600
	Control Valve	YA00000734PI	124,483	-	70,000
	Unit Pump	YB60003096PI	45,000	22,000	20,000
ZX330-3	Control Valve	4625137PSD	164,225	-	70,000
ZX470LC-5G	Swing Motor (R,L)	4698700PI	32,727	18,000	15,000
	Pump Device	YB60001100PU	152,588	60,300	51,600
ZX870LCH-5G	Motor	4688059PU	108,272	59,800	48,300
ZW220	Main Pump	9254028PU	85,797	64,300	52,900
EX1200-6	Pump Piston	YA00053205PU	137,088	54,200	46,400
4HK1-XYSA02	Turbo Charger	8973628391PU	13,455	7,400	-

The Process of Reman



REMANUFACTURED COMPONENTS

HITACHI

Reliable Solutions

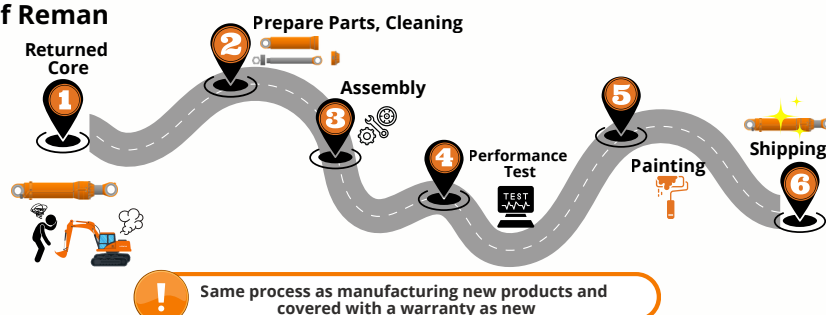
It's not rebuilt. It's your machine **REBORN.**



- ✓ 1-year warranty by HCMM
- ✓ Quality same as new
- ✓ Reduced downtime
- ✓ Used components needed to be return

Machine Model Name	Description	PI Part Number
ZX70-5A	JOINT;CENTER	9195313PI
ZX130-5G	PUMP-DEVICE	YB60000369PI
ZX138MF	SWING-DEVICE	9298823PI
ZX330-5G	UNIT;PUMP	YB60003096PI
ZX470-5G	PUMP	9184686PI
ZX470LC-5G	MOTOR;OIL	YA00085173PI
ZX470LC-5G	TRAVEL-DEVICE	YB60004542PI
ZX870LC-5G	PUMP;PISTON	YB60000246PI
ZX870LCH-5G	TRAVEL-DEVICE	YB60004675PI
EX1200-6	PUMP;PISTON	4667614PI
EX1200-7-BH	MOTOR;OIL	4688059PI
EX1200-7-BH	PUMP;PISTON	YA00053205PI

The Process of Reman



Hitachi Construction Machinery

“Genuine Remanufactured Components”

REMANUFACTURED COMPONENTS



A lineup of Hitachi Construction Machinery machines featuring high environmental performances and utilizations.

Machine performances can be maximized by the proficient techniques of the service and reliable quality of Hitachi genuine parts.

Hitachi genuine parts ensure three values:

- Provide continued performance in harsh operating environments.
- Reduce fuel consumption and extend the life of machines
- Reduce environmental load

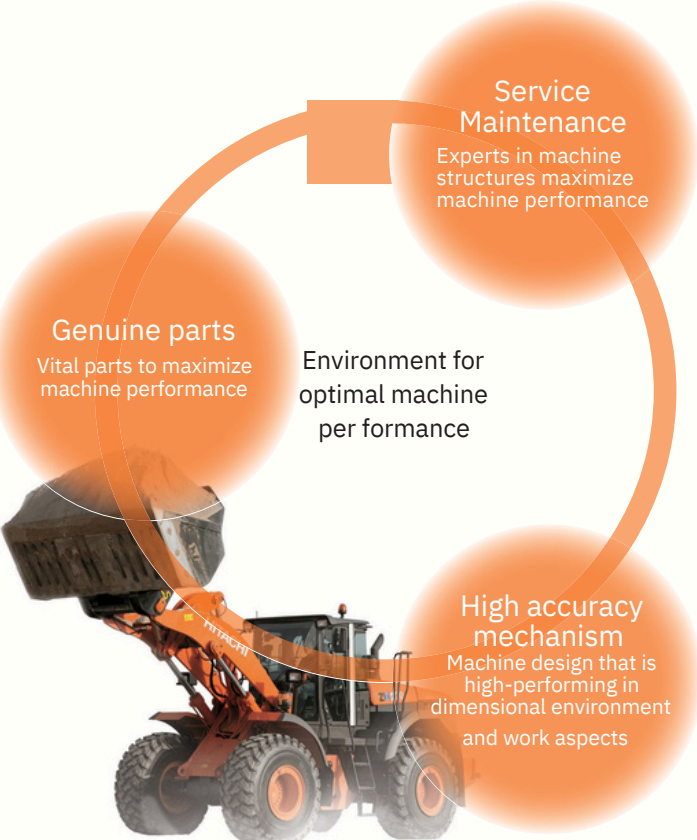
See the various values that are created by unifying these three elements with your eyes and hands for yourself.



SUPPORT CHAIN

Hitachi Genuine Remanufactured Components are only available from authorized Hitachi dealers. Contact your local Hitachi dealer for information regarding the availability of remanufactured components.

PERFORMANCE



Hitachi Construction Machinery

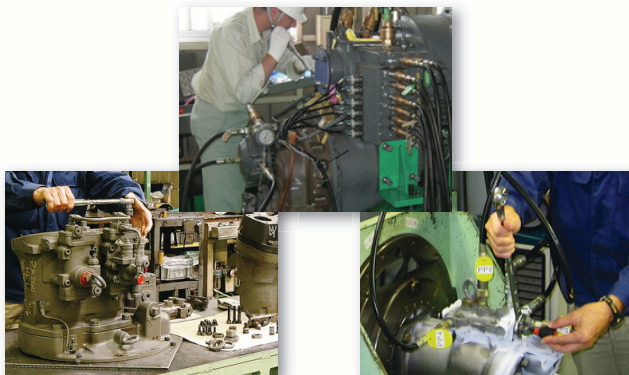
HITACHI

Hitachi Construction Machinery

"Genuine Remanufactured Components"

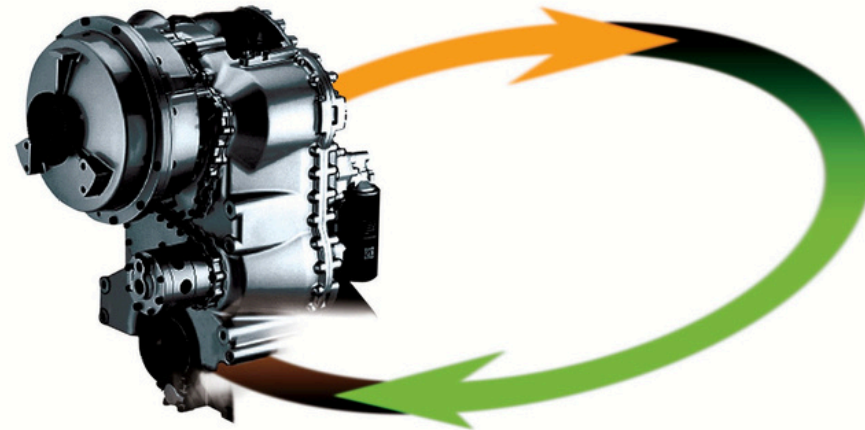
As good as new for reduced investment!

Hitachi Genuine Remanufactured Components are solutions for reducing machinery costs and for Hitachi customers wishing to have their main machine components replaced. At present, the replacement of a main component requires the investment for a new component, however, that is not an economical option for machines with higher hours. Although repairing or overhauling the main components may appear to be the cost-effective solution, this causes long machine downtime. Why not reduce down time cost with planned maintenance that includes Hitachi Genuine Remanufactured Components?



QUALITY PERFORMANCE

Integrity of Genuine Performance at Sign ifi cantly Reduced Cost.



**Quality – Serviceable quality,
same as new component**

Hitachi Genuine Remanufactured Components meet the same testing criteria as new components. Hitachi Genuine Remanufactured Components will only use genuine Hitachi parts. Furthermore, Hitachi Genuine Remanufactured Components will be remanufactured to be best suited for the requirements of the latest manufacturers' specifications.

Warranty – Available warranty, the same as new component
As with a new component, Hitachi Genuine Remanufactured Components have six months warranty.

Minimum machine downtime

There is no need to wait for repairs of the components, and installation is as quick as that for a new component. Hitachi Genuine Remanufactured Components are adjusted and set to fit Hitachi machines immediately, so no further setting or adjustment is required. Hitachi Genuine Remanufactured Components are the most cost-effective solution for the maximized long-term performance of your Hitachi machines.

Environmental impacts

The Hitachi Genuine Remanufactured Components Program is a recycling program intended to reduce waste materials and minimize the need for raw materials. We are aiming at producing durable solutions in order to reduce the environmental impacts, consequentially saving resources and minimizing damage to our environment.