

HITACHI

CONSTRUCTION HYDRAULIC EXCAVATOR

ZX350-7G Series

Reliable Solutions



Engine Rated Power : 200 kW (268 HP)

Operating Weight : 31.900 – 33.800 kg

Bucket Capacity : 1,38 – 1,86 m³

Model Code : ZX350-7G | ZX350LC-7G

200 kW (268 HP)

34.000 – 34.800 kg

1,38 – 1,62 m³

ZX350H-7G | ZX350LCH-7G

ZAXIS350



GET MORE FROM YOUR MACHINE

You're at the heart of Hitachi Construction Machinery's design for its latest range of excavators. To continuously improve on previous generation machines, we've focused on enhancing your profit in business.

We have made cost reduction for our customers our top priority and, in doing so, have achieved reduced fuel consumption. The cab has been redesigned to improve the operator's working environment and controllability, with production also expected to improve. An engine that already has a proven track record of high reliability has been adopted, and we have placed further work in it to make it even more robust. Remote failure diagnosis, monitoring, and OTA (Over The Air - controller rewriting) are also supported to reduce downtime.



INSIDE



4-5 | MORE FUEL
EFFICIENCY



6-7 | BETTER
OPERABILITY



8-9 | HIGH DURABILITY
AND RELIABILITY



10-11 | SMOOTH
MAINTENANCE



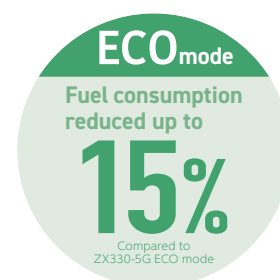
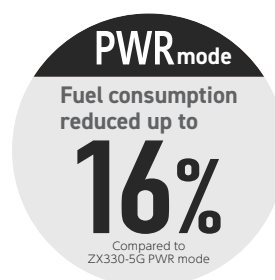
12-13 | MACHINE
MANAGEMENT

MORE FUEL EFFICIENCY

Improved HIOS III hydraulic system matched with an engine that improves the ZX-7G fuel efficiency and fuel cost.

Reducing fuel consumption

With the reduction of fuel consumption in each mode compared to conventional models, this model will contribute to increasing your profit.



HIOS III hydraulic system

The hydraulic system developed was based on the concept of a hydraulic system that fits in-line with a sense of human operation.

- ✓ Efficient hydraulic control achieves smoother and more speedy movement of front attachments.

Fine-tuned hydraulic pump control

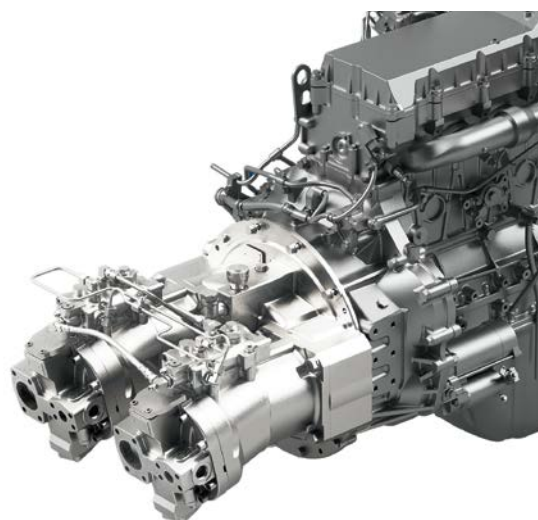
A solenoid valve mounted on the hydraulic system further controls the pump flow rate to reduce unnecessary load on the engine.

- ✓ Contributing to low fuel consumption operation

High efficiency engine

A common rail type fuel injection system is used to electronically control fuel quantity and injection timing for more efficiency in fuel combustion.

- ✓ Contributing to high engine power and low fuel consumption.



Operation support system for high efficiency

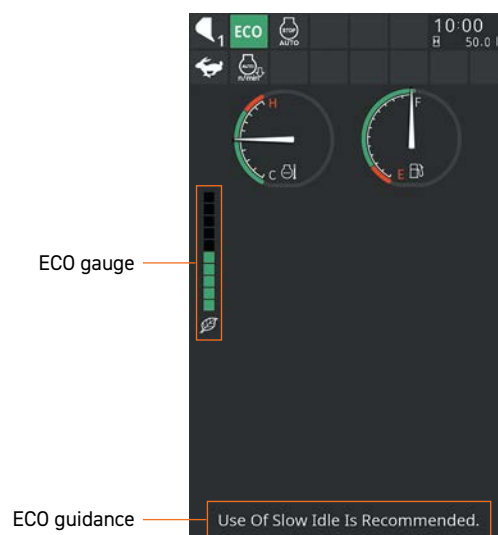
ECO gauge

A gauge displays the current fuel consumption during an operation with a higher mark on the gauge indicating a lower fuel usage. The eco-gauge helps to support the operator in achieving lower fuel consumption throughout the work required.

ECO guidance

Prompts the operator to better fuel economy. Messages are also shown while the ECO gauge is displayed.

- ✓ Prompts operator for better economy





BETTER OPERABILITY

In the cab of the ZAXIS-7G, enhanced comfort and safety features are at your fingertips, offering the power to perform greater productivity with ease as well as reduced fatigue.



Operation is easy with ergonomically designed controls and switches.

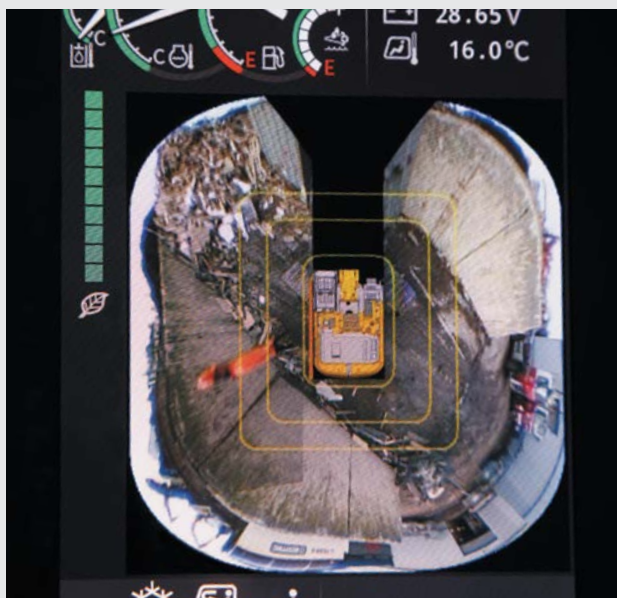


Low-reflective color 8" monitor, up to a 42% larger display compared to ZX-5G series. Easier to view and navigate. Optional USB power supply and Bluetooth® available.



Pilot shut-off lever

The pilot shut-off lever allows easier locking and unlocking with wrist operation.



AERIAL ANGLE (Optional)

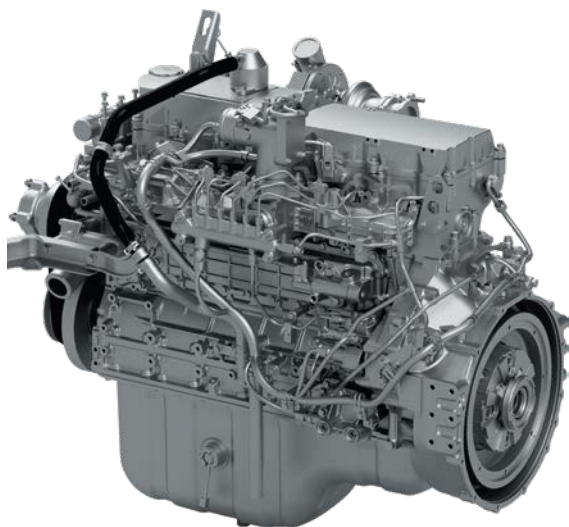
270° bird's eye-view camera system is available as an option.

HIGH DURABILITY AND RELIABILITY

Completing a project on time and on budget depends on the ability of your construction equipment to perform all day, every day. That's why the owners have profited from generations of reliable and durable machinery. Hitachi Construction Machinery develops its machines with constant awareness of the need to further improve long-term reliability. High long-term reliability is good in not only performance all day, every day but also for resale value.

An engine with improved reliability

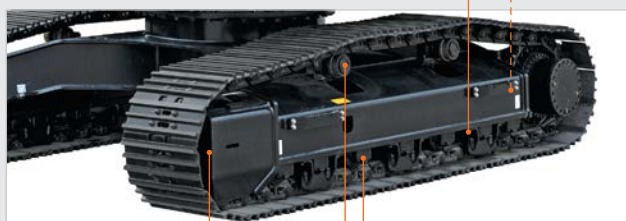
The engine is a highly reliable model that has already been adopted previously. In adopting it for the ZX-7G, we have put in our efforts to further increase durability and to boost your uptime. EGR (Exhaust Gas Recirculation) is removed from the engine, increasing its durability for using low-quality fuel.



✓ Reinforced motor cover

Enlarged track guard

✓ Reducing wear and damage risks on the track link and lower roller.



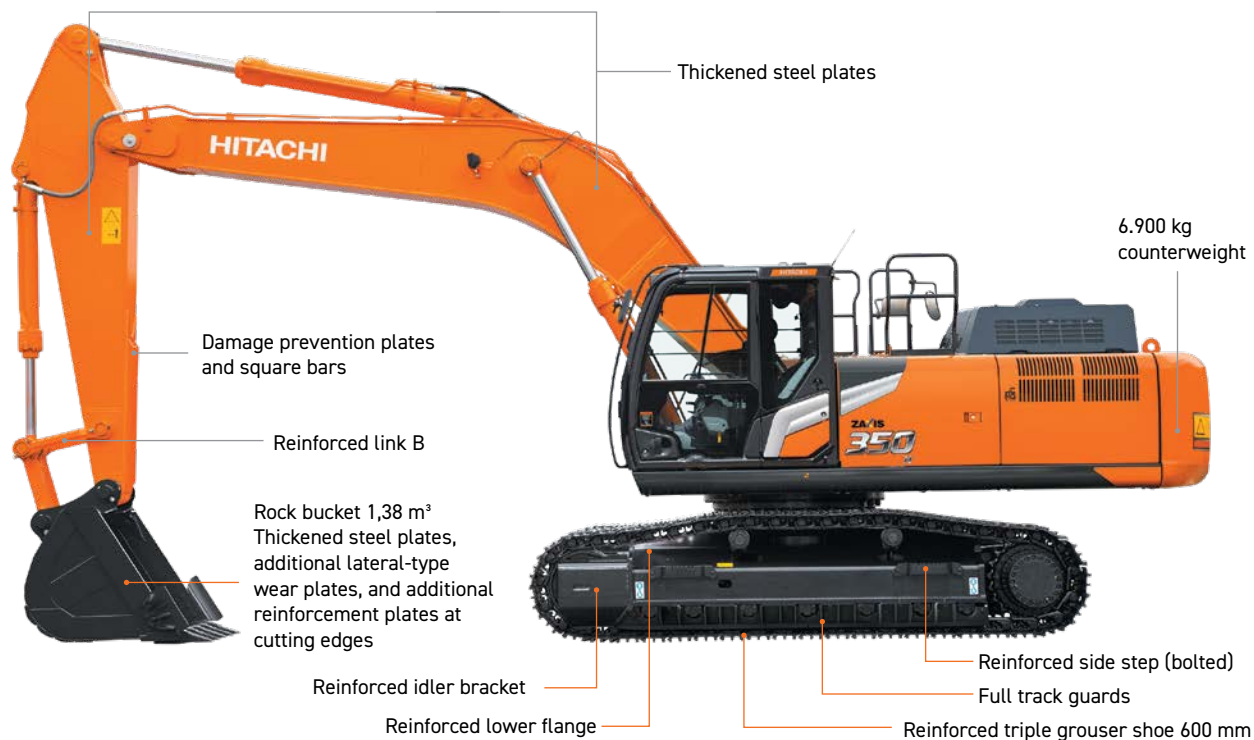
Structurally improved upper roller, lower roller, and the front idler

✓ Maintains lubrication performance in the roller and improves roller durability



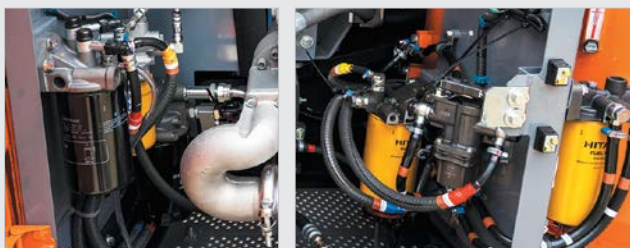
Heavy-Duty model ZAXIS 350H / 350LCH

The heavy duty model is more durable with reinforced load-bearing points on the excavator



High reliable fuel circuit

Larger fuel pump and changing filter locaton improve the reliability of the entire fuel circuit and further help to prevent engine problems. Contributing to boost your uptime.



Reinforced plat form plate

- ✓ Increased plate strength and deformation-resistant structure



Equipped with an expansion tank

- ✓ Improving the reliability of the engine cooling performance



SMOOTH MAINTENANCE

Regular maintenance is essential for the machine to achieve high performance.

ZAXIS excavators are designed for ease of regular maintenance. Simple and easy maintenance keeps the machine in good condition and keeps its high performance.

Easy to clean radiator/Oil cooler/Inter cooler core



Dust-proof indoor net

- ✓ Provided at the front of radiator
- ✓ Easy to be removed and cleaned



Cleaning port for radiator/Oil cooler/Inter cooler core

- ✓ The cover can be opened without the need for any tools
- ✓ Easy to clean radiator/Oil cooler/Inter cooler core with simple air blowing



Easy-access air conditioner condenser

- ✓ The condenser can be opened
- ✓ Easy to clean radiator/Oil cooler/Inter cooler core with simple air blowing

Remote lubrication of arm-end pin

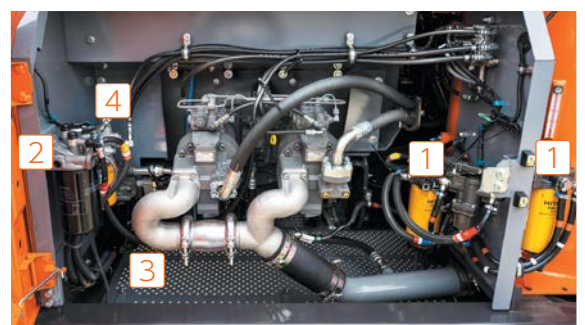
- ✓ Reducing the risk of mud stuck in the lubrication port
- ✓ Performs smooth lubrication



Easy access to filters

Filter locations are concentrated in the pump room

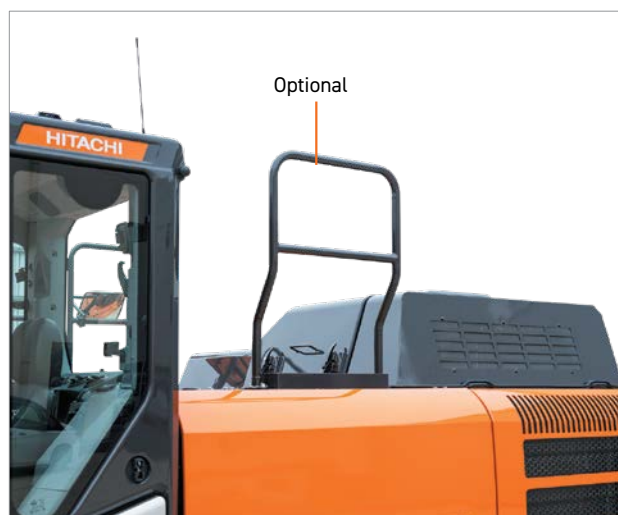
- 1 Fuel main filter
- 2 Fuel pre-filter with water separator
- 3 Engine oil filter
- 4 Pilot filter





Handrail (optional)

Handrails have been installed on the platform to allow safer access to the engine and maintenance work around the engine



MACHINE MANAGEMENT (Optional)

Hitachi Construction Machinery offers a wide range of after-sales services to help you feel in total control of your fleet and workload. These initiatives give you access to vital data and tools to manage your machine.



A wide range of data on Global e-Service enhances efficiency.

Data report

Regular reports inform you of the machine's operation status. Emergency reports inform you of alarm information.

The stable operation of the machine is further supported with two types of reports visualizing the machine's daily operation status.

Monthly report

Regular reports on the operating status of each machine.

Alarm report

If an emergency alarm is generated from a sensor mounted on the machine, its alarm content is reported by e-mail in a timely manner. You can receive it on your computer, mobile phone, or smartphone (communication format is via e-mail).

movie for
further info.





ConSite Air

This is a service solution to diagnose machine status and update software from a remote location using OTA (Over The Air).

- Machine status, including error code display and sensor data, can be checked quickly, reducing downtime due to machine trouble.
- Software updates can be performed remotely, reducing the amount of machine downtime required.



Remote Diagnosis



Remote Software update

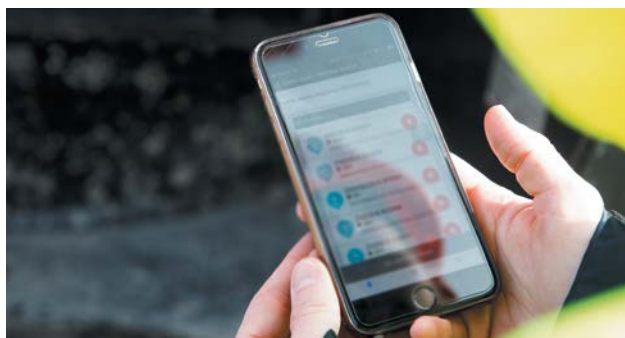
movie for further info.



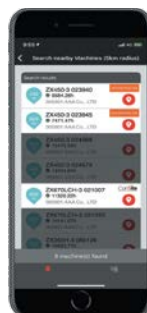
ConSite Pocket

ConSite Pocket sends you real-time alerts for issues arising with your machine. You'll receive recommendations on what to do and step-by-step help guides. The app also enables you to see the location of your fleet.

- Use your smartphone to check monthly reports, alarm reports, as well as machine operating positions.
- If an alarm report is generated, the system will notify you immediately using a push notification.



Monthly report



Machine finder



Location information

movie for further info.



ConSite Shot

This is a smartphone application that allows you to easily perform daily inspections of your machines and rental warehousing / delivery management.

- You can easily create high-quality inspection reports and share information within your company or with agents etc.
- Customers who have rental machines can also use it during rental warehousing / delivery inspections.



Load condition



Acceptance or delivery inspection of rental machines



Inspection report with condition photo

movie for further info.



ConSite OIL

This system detects if the oil quality has deteriorated, due to contamination or low viscosity. If this happens, you and your authorized dealer will receive an alert.

movie for further info.



SPECIFICATIONS

ENGINE	
Model	Isuzu 6HK1
Type	4-cycle water-cooled, common rail direct injection
Aspiration	Turbocharged, intercooled
No. of cylinders	6
Rated power	
ISO 14396 : 2002 gross	200 kW (268HP) at 1.900 min ⁻¹ (rpm)
ISO 9249 : 2007 net	190 kW (254HP) at 1.900 min ⁻¹ (rpm)
Maximum torque	1.069 Nm (109 kgfm) at 1.500 min ⁻¹ (rpm)
Piston displacement	7,790 L
Bore and stroke	115 mm x 125 mm
Batteries	2 x 12 V

HYDRAULIC SYSTEM	
Hydraulic Pumps	
Main pumps	2 variable displacement axial piston pumps
Maximum oil flow	2 x 288 L/min
Pilot pump	1 gear pump
Maximum oil flow	30,2 L/min
Hydraulic Motors	
Travel	2 variable displacement axial piston motors
Swing	1 axial piston motor
Relief Valve Settings	
Implement circuit	34,3 MPa (350 kgf/cm ²)
Swing circuit	32,4 MPa (330 kgf/cm ²)
Travel circuit	34,3 MPa (350 kgf/cm ²)
Pilot circuit	3,9 MPa (40 kgf/cm ²)
Power boost	38,0 MPa (338 kgf/cm ²)
Hydraulic Cylinders	
	Quantity
Boom	2
Arm	1
Bucket	1

UPPERSTRUCTURE	
Revolving Frame	
D-section frame for resistance to deformation.	
Swing Device	
Axial piston motor with planetary reduction gear is bathed in oil. Swing circle is single-row. Swing parking brake is spring-set/hydraulicreleased disc type.	
Swing speed	10,7 min ⁻¹ (rpm)
Swing torque	120 kNm (12.200 kgfm)

UNDERCARRIAGE	
Tracks	
Heat-treated connecting pins with dirt seals. Hydraulic (grease) track adjusters with shock-absorbing recoil springs.	
Numbers of Rollers and Shoes on Each Side	
Upper rollers	2
Lower rollers	7 : ZX350-7G / ZX350H-7G
	8 : ZX350LC-7G / ZX350LCH-7G
Track shoes	45 : ZX350-7G / ZX350H-7G
	48 : ZX350LC-7G / ZX350LCH-7G
Track guards	3 : ZX350-7G / ZX350LC-7G
	Full track guard : ZX350H-7G / ZX350LCH-7G
Travel Device	
Each track driven by 2-speed axial piston motor. Parking brake is spring-set/hydraulic-released disc type. Automatic transmission system: High-Low.	
Travel speeds	High : 0 to 5,0 km/h
	Low : 0 to 3,2 km/h
Maximum traction force	298 kN (30.400 kgf)
Gradeability	70% (35°) continuous

SERVICE REFILL CAPACITIES	
Fuel tank	630,0 L
Engine coolant	41,0 L
Engine oil	41,0 L
Swing device	15,7 L
Travel device (each side)	11,0 L
Hydraulic system	340,0 L
Hydraulic oil tank	180,0 L

WEIGHTS AND GROUND PRESSURE

Operating Weight and Ground Pressure

			ZX350-7G			ZX350LC-7G		
Boom type			Monoblock			Monoblock		
Shoe type	Shoe width (mm)	Arm length (m)	kg	kPa	kgf/cm ²	kg	kPa	kgf/cm ²
Triple grouser	600	2,67	31.900	64	0,66	32.600	61	0,62
		3,20	32.000	65	0,66	32.600	61	0,62
		4,00	32.200	65	0,66	32.800	61	0,63
	700	2,67	32.500	56	0,57	33.100	53	0,54
		3,20	32.500	56	0,57	33.200	53	0,54
		4,00	32.700	57	0,58	33.400	53	0,55
	800	2,67	32.900	50	0,51	33.500	47	0,48
		3,20	32.900	50	0,51	33.600	47	0,48
		4,00	33.100	50	0,51	33.800	47	0,48
Reinforced Triple grouser	600	2,67	32.100	65	0,66	32.700	61	0,62
		3,20	32.200	65	0,66	32.800	61	0,63
		4,00	32.400	65	0,67	33.000	62	0,63

Including 1,40 m³ (ISO 7451 : 2007 heaped) bucket weight (1.170 kg) and counterweight (6.350 kg).

Operating Weight and Ground Pressure

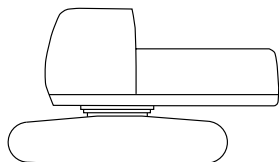
			ZX350H-7G			ZX350LCH-7G		
Boom type			Monoblock			Monoblock		
Shoe type	Shoe width (mm)	Arm length (m)	kg	kPa	kgf/cm ²	kg	kPa	kgf/cm ²
Reinforced Triple grouser	600	2,67	34.000	69	0,70	34.700	65	0,66
	600	3,20	34.100	69	0,70	34.800	65	0,66

Including 1,38 m³ (ISO heaped) H-bucket weight (1.340 kg) and counterweight (6.900kg).

BASIC MACHINE WEIGHT AND COMPONENTS WEIGHT

Basic Machine Weight and Overall Width

Excluding front end attachment, fuel, hydraulic oil and coolant etc. Including counterweight.



			ZX350-7G		ZX350LC-7G	
Shoe width (mm)	Weight (kg)	Overall width (mm)	Weight (kg)	Overall width (mm)	Weight (kg)	Overall width (mm)
600	24.400	3.190	25.000	3.190	25.000	3.190
700	25.000	3.290	25.600	3.290	25.600	3.290
800	25.300	3.390	26.000	3.390	26.000	3.390

			ZX350H-7G		ZX350LCH-7G	
Shoe width (mm)	Weight (kg)	Overall width (mm)	Weight (kg)	Overall width (mm)	Weight (kg)	Overall width (mm)
600	25.800	3.190	26.500	3.190	26.500	3.190

Components Weight

Unit: kg

	ZX350-7G / ZX350LC-7G	ZX350H-7G / ZX350LCH-7G
Counterweight	6.350	6.900
Monoblock boom (with arm cylinder and boom cylinder)	3.700	4.000
Arm 2,67 m (with bucket cylinder)	1.700	1.900
Arm 3,20 m (with bucket cylinder)	1.800	2.000
Arm 4,00 m (with bucket cylinder)	2.000	–
Bucket ISO 7451 : 2007 1,40 m ³	1.200	–
Bucket ISO 7451 : 2007 1,38 m ³	–	1.300

BUCKET AND ARM DIGGING FORCE

Arm length	2,67 m		3,20 m		4,00 m	
	kN	kgf	kN	kgf	kN	kgf
Bucket digging force* ISO 6015 : 2006	246	25.100	246	25.100	246	25.100
Arm crowd force* ISO 6015 : 2006	222	22.600	185	18.900	158	16.100

* At power boost

SPECIFICATIONS

ATTACHMENTS

ZX350-7G

Bucket	Capacity (m³)	Width (mm)		No. of teeth	Weight (kg)	Recommendation		
	ISO7451: 2007 heaped	Without side cutters	With side cutters			Arm 2,67 m	Arm 3,20 m	Arm 4,00 m
Hoe bucket (Super V teeth) (Level-pin type) (Level-pin type)	1,40	1.280	1.410	5	1.150	⊙	⊙	○
	1,62	1.460	1.590	5	1.240	○	○	–
	1,86	1.640	–	5	1.200	□	–	–
	1,40	1.280	1.410	5	1.110	⊙	⊙	○
	1,40	1.280	1.410	5	1.130	⊙	⊙	○
	1,62	1.460	1.590	5	1.240	○	○	–
Reinforced hoe bucket	1,40	1.280	1.410	5	1.360	⊙	⊙	○
	1,62	1.460	1.590	5	1.480	○	○	–
Rock bucket (Super V teeth) (Level-pin type) (Super V teeth)	1,38	–	1.360	5	1.330	△	△	–
	1,38	–	1.360	5	1.350	△	△	–
	1,50	–	1.470	5	1.400	△	△	–

ZX350LC-7G

Bucket	Capacity (m³)	Width (mm)		No. of teeth	Weight (kg)	Recommendation		
	ISO7451: 2007 heaped	Without side cutters	With side cutters			Arm 2,67 m	Arm 3,20 m	Arm 4,00 m
Hoe bucket (Super V teeth) (Level-pin type) (Level-pin type)	1,40	1.280	1.410	5	1.150	⊙	⊙	⊙
	1,62	1.460	1.590	5	1.240	○	○	□
	1,86	1.640	–	5	1.200	□	–	–
	1,40	1.280	1.410	5	1.110	⊙	⊙	⊙
	1,40	1.280	1.410	5	1.130	⊙	⊙	⊙
	1,62	1.460	1.590	5	1.240	○	○	□
Reinforced hoe bucket	1,40	1.280	1.410	5	1.360	⊙	⊙	⊙
	1,62	1.460	1.590	5	1.480	○	○	□
Rock bucket (Super V teeth) (Level-pin type) (Super V teeth)	1,38	–	1.360	5	1.330	△	△	–
	1,38	–	1.360	5	1.350	△	△	–
	1,50	–	1.470	5	1.400	△	△	–

ATTACHMENTS

ZX350H-7G

Bucket	Capacity (m ³)	Width (mm)		No. of teeth	Weight (kg)	Recommendation	
	ISO7451: 2007 heaped	Without side cutters	With side cutters			Arm 2,67 m H	Arm 3,20 m H
Reinforced hoe bucket	1,40	1.280	1.410	5	1.360	◎	◎
	1,62	1.460	1.590	5	1.480	◎	○
Rock bucket (Super V teeth)	1,38	–	1.360	5	1.330	△	△
(Level-pin type)	1,38	–	1.360	5	1.350	△	△
(Super V teeth)	1,50	–	1.470	5	1.400	△	△

ZX350LCH-7G

Bucket	Capacity (m ³)	Width (mm)		No. of teeth	Weight (kg)	Recommendation	
	ISO7451: 2007 heaped	Without side cutters	With side cutters			Arm 2,67 m H	Arm 3,20 m H
Reinforced hoe bucket	1,40	1.280	1.410	5	1.360	◎	◎
	1,62	1.460	1.590	5	1.480	◎	○
Rock bucket (Super V teeth)	1,38	–	1.360	5	1.330	△	△
(Level-pin type)	1,38	–	1.360	5	1.350	△	△
(Super V teeth)	1,50	–	1.470	5	1.400	△	△

◎ Suitable for materials with density of 2.000 kg/m³ or less

○ Suitable for materials with density of 1.600 kg/m³ or less

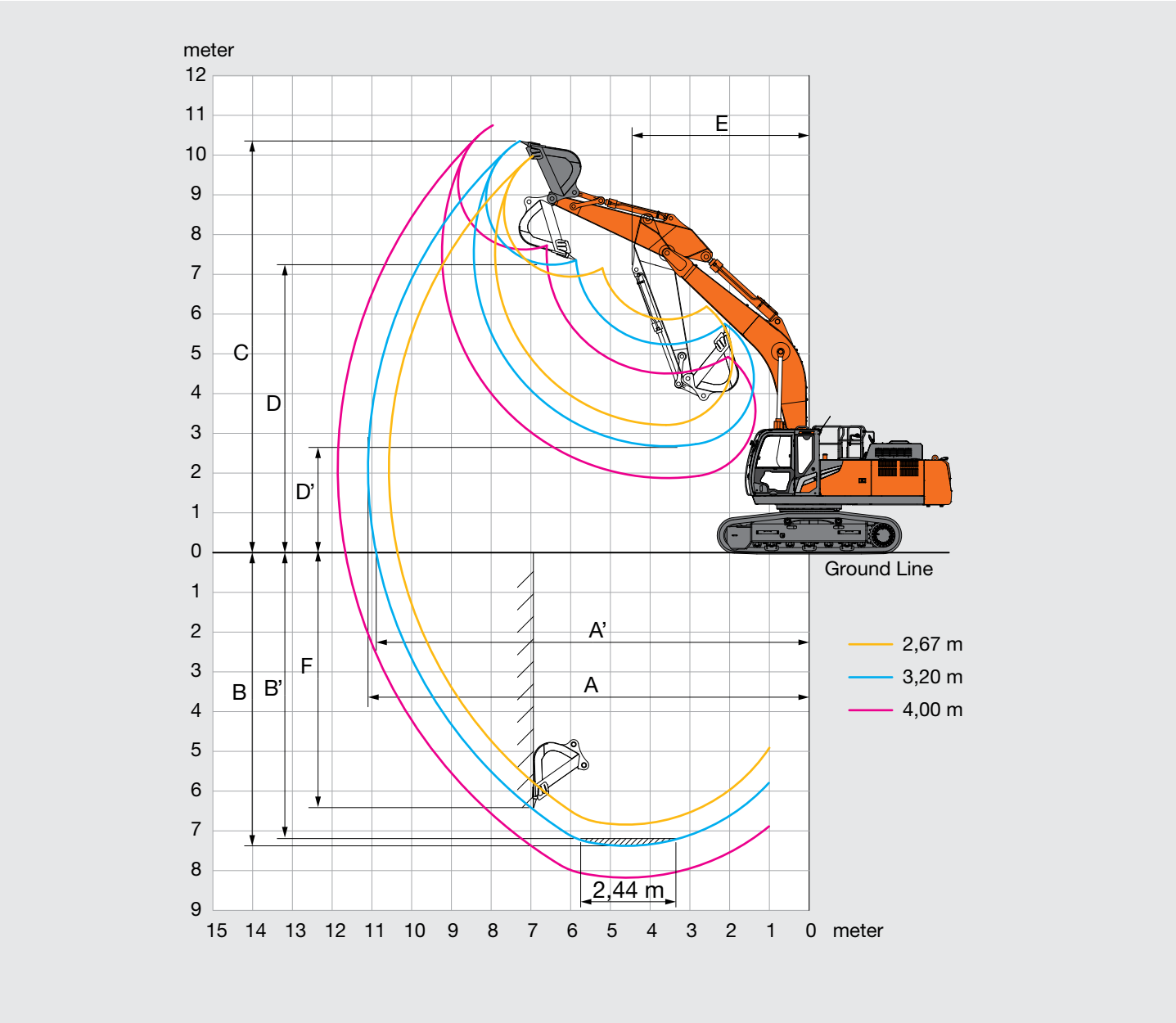
□ Suitable for materials with density of 1.100 kg/m³ or less

△ Rock digging

– Not applicable

SPECIFICATIONS

WORKING RANGES

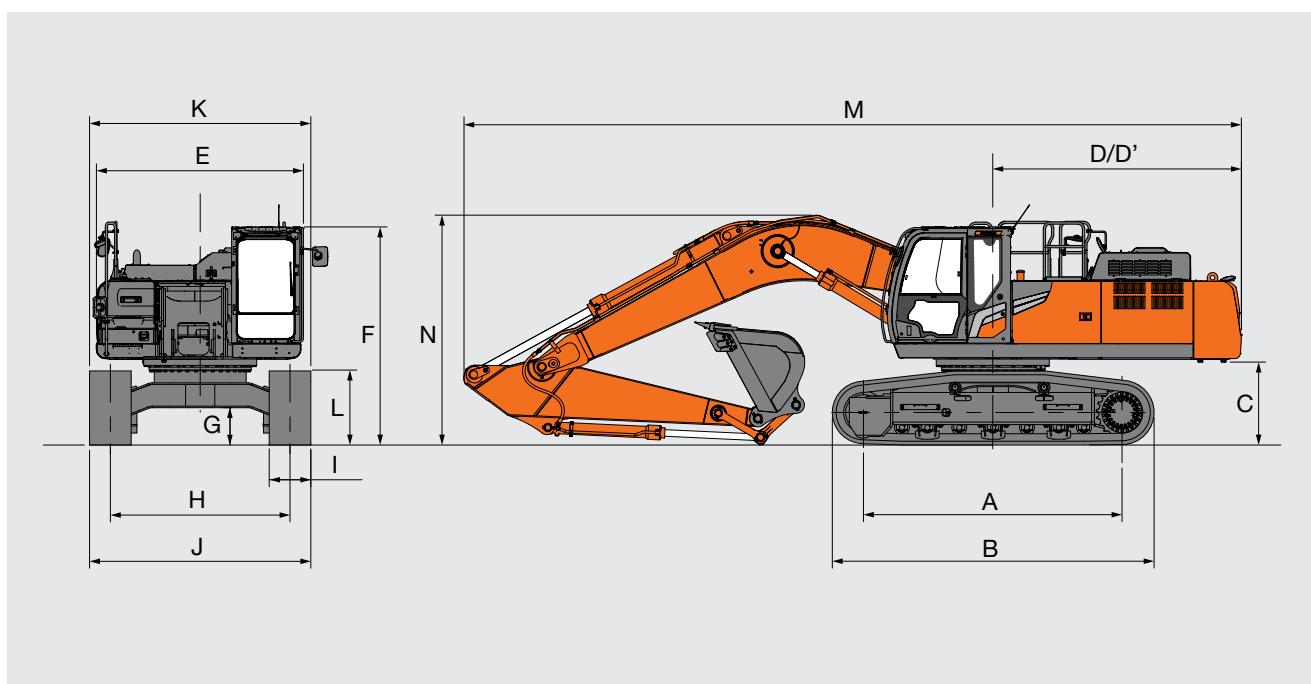


Unit: mm

Arm length	Monoblock boom		
	2,67 m	3,20 m	4,00 m
A Max. digging reach	10.570	11.100	11.860
A' Max. digging reach (on ground)	10.360	10.890	11.670
B Max. digging depth	6.840	7.380	8.180
B' Max. digging depth for 2,44 m level	6.640	7.210	8.040
C Max. cutting height	9.990	10.350	10.750
D Max. dumping height	6.940	7.240	7.630
D' Min. dumping height	3.210	2.680	1.880
E Min. swing radius	4.610	4.460	4.470
F Max. vertical wall digging depth	5.510	6.420	7.270

Excluding track shoe lug

DIMENSIONS



Unit: mm

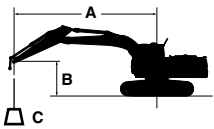
		Monoblock boom			
Arm length		ZX350-7G	ZX350LC-7G	ZX350H-7G	ZX350LCH-7G
A	Distance between tumblers	3.730	4.050	3.730	4.050
B	Undercarriage length	4.630	4.950	4.640	4.970
* C	Counterweight clearance	1.160	1.160	1.160	1.160
D	Rear-end swing radius	3.590	3.590	3.590	3.590
D'	Rear-end length	3.600	3.600	3.600	3.600
E	Overall width of upperstructure	2.990	2.990	2.990	2.990
F	Overall height of cab	3.150	3.150	3.150	3.150
* G	Min. ground clearance	500	500	500	500
H	Track gauge	2.590	2.590	2.590	2.590
I	Track shoe width	G.600	G.600	G.600	G.600
J	Undercarriage width	3.190	3.190	3.190	3.190
K	Overall width	3.190	3.190	3.190	3.190
* L	Track height with triple grouser shoes	1.060	1.060	1.070	1.070
M	Overall length				
	With Arm 2,67 m	11.350	11.350	11.350	11.350
	With Arm 3,20 m	11.220	11.220	11.220	11.220
	With Arm 4,00 m	11.330	11.330	-	-
* N	Overall height of boom				
	With Arm 2,67 m	3.520	3.520	3.520	3.520
	With Arm 3,20 m	3.310	3.310	3.310	3.310
	With Arm 4,00 m	3.590	3.590	3.590	3.590

* Excluding track shoe lug

G: Triple grouser shoe

MACHINE CAPACITIES

- Notes:
- 1. Ratings are based on ISO 10567 : 2007.
 - 2. Machine capacity does not exceed 75% of tipping load with the machine on firm, level ground or 87% full hydraulic capacity.
 - 3. The load point is the center-line of the bucket pivot mounting pin on the arm.
 - 4. * Indicates load limited by hydraulic capacity.
 - 5. 0 m = Ground.
 - 6. Machine specifications are determined excluding the bucket.



A: Load radius
B: Load point height
C: Machine capacity



For machine capacities, subtract installed attachment and quick hitch weight from machine capacities.
To determine lifting capacities, apply "Rating over-side or 360 degrees" machine capacities from the table and deduct weight of installed attachment and quick hitch.
Optional feature may affect machine performance.









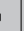

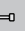



ZX350-7G

Rating over-front Rating over-side or 360 degrees Unit : kg

Conditions	Load point height m	Load radius												At max. reach		
		1,5 m		3,0 m		4,5 m		6,0 m		7,5 m		9,0 m				
																meter
Boom 6,40 m Arm 2,67 m Counter Weight 6.350 kg	7,5															
	6,0							*10.470	9.320	9.080	6.510			8.130	5.830	8,00
	4,5					*15.090	13.660	*11.830	8.860	8.870	6.320			7.150	5.090	8,58
	3,0					*18.610	12.450	12.040	8.340	8.600	6.070			6.660	4.720	8,87
	1,5							11.570	7.910	8.340	5.830			6.520	4.590	8,89
	0 (Ground)					17.920	11.530	11.300	7.670	8.180	5.680			6.710	4.700	8,65
	-1,5			*13.890	*13.890	17.950	11.560	11.230	7.610	8.140	5.650			7.310	5.110	8,13
	-3,0			*22.600	*22.600	*17.520	11.750	11.350	7.720					8.660	6.020	7,26
	-4,5			*17.240	*17.240	*13.630	12.160							*10.130	8.300	5,88
	-6,0															
Boom 6,40 m Arm 3,20 m Counter Weight 6.350 kg	7,5															
	6,0									*9.060	6.610			*6.310	5.230	8,58
	4,5							*11.070	9.020	8.960	6.390	6.660	4.750	*6.330	4.630	9,12
	3,0					*17.360	12.830	12.200	8.480	8.660	6.120	6.540	4.630	6.110	4.320	9,39
	1,5					18.400	11.940	11.670	8.000	8.380	5.860	6.400	4.500	5.990	4.210	9,42
	0 (Ground)					17.960	11.560	11.340	7.700	8.180	5.670	6.310	4.420	6.130	4.290	9,19
	-1,5			*13.320	*13.320	17.880	11.490	11.200	7.570	8.090	5.590			6.590	4.610	8,70
	-3,0	*15.640	*15.640	*21.080	*21.080	18.020	11.620	11.250	7.620	8.150	5.650			7.610	5.300	7,90
	-4,5			*20.290	*20.290	*15.370	11.940	11.510	7.850					*9.860	6.860	6,66
	-6,0															
Boom 6,40 m Arm 4,00 m Counter Weight 6.350 kg	7,5													*5.030	*5.030	8,63
	6,0									*8.030	6.740	*6.800	4.910	*4.880	4.510	9,41
	4,5									*8.790	6.490	6.740	4.810	*4.880	4.040	9,91
	3,0					*15.260	13.330	*11.620	8.650	8.740	6.180	6.560	4.640	*5.020	3.790	10,16
	1,5					*18.500	12.200	11.790	8.090	8.400	5.870	6.380	4.480	5.280	3.690	10,18
	0 (Ground)			*8.060	*8.060	17.990	11.560	11.330	7.680	8.140	5.630	6.240	4.340	5.370	3.740	9,97
	-1,5	*8.100	*8.100	*12.210	*12.210	17.700	11.320	11.090	7.460	7.980	5.480	6.160	4.270	5.700	3.960	9,53
	-3,0	*12.710	*12.710	*17.650	*17.650	17.720	11.330	11.040	7.420	7.950	5.450			6.400	4.440	8,80
	-4,5	*18.210	*18.210	*23.960	23.330	*17.240	11.550	11.180	7.540	8.100	5.600			7.820	5.410	7,71
	-6,0			*17.350	*17.350	*12.860	12.020	*9.030	7.950					*8.850	7.840	6,06

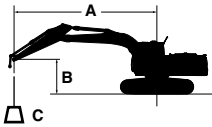
ZX350LC-7G

 Rating over-front
  Rating over-side or 360 degrees
 Unit : kg

Conditions	Load point height m	Load radius												At max. reach		
		1,5 m		3,0 m		4,5 m		6,0 m		7,5 m		9,0 m				
																meter
Boom 6,40 m Arm 2,67 m Counter Weight 6.350 kg	7,5															
	6,0							*10.470	9.510	*9.740	6.650			9.180	5.960	8,00
	4,5					*15.090	13.950	*11.830	9.050	10.030	6.460			8.070	5.210	8,58
	3,0					*18.610	12.730	*13.430	8.530	9.750	6.210			7.540	4.830	8,87
	1,5							13.280	8.100	9.490	5.980			7.390	4.710	8,89
	0 (Ground)					*20.290	11.810	13.000	7.860	9.320	5.830			7.620	4.820	8,65
	-1,5			*13.890	*13.890	*19.600	11.840	12.930	7.800	9.280	5.790			8.310	5.240	8,13
	-3,0			*22.600	*22.600	*17.520	12.030	13.050	7.910					9.870	6.170	7,26
	-4,5			*17.240	*17.240	*13.630	12.440							*10.130	8.490	5,88
	-6,0															
Boom 6,40 m Arm 3,20 m Counter Weight 6.350 kg	7,5															
	6,0									*9.060	6.750			*6.310	5.360	8,58
	4,5							*11.070	9.210	*9.710	6.540	*7.470	4.860	*6.330	4.750	9,12
	3,0					*17.360	13.110	*12.790	8.670	9.820	6.270	7.400	4.750	*6.550	4.430	9,39
	1,5					*19.920	12.220	13.390	8.190	9.530	6.010	7.260	4.620	6.780	4.320	9,42
	0 (Ground)					*20.700	11.840	13.040	7.890	9.320	5.820	7.160	4.530	6.950	4.400	9,19
	-1,5			*13.320	*13.320	*20.170	11.770	12.900	7.760	9.230	5.740			7.490	4.730	8,70
	-3,0	*15.640	*15.640	*21.080	*21.080	*18.530	11.900	12.950	7.810	9.290	5.790			8.660	5.440	7,90
	-4,5			*20.290	*20.290	*15.370	12.220	*11.590	8.040					*9.860	7.030	6,66
	-6,0															
Boom 6,40 m Arm 4,00 m Counter Weight 6.350 kg	7,5													*5.030	*5.030	8,63
	6,0									*8.030	6.890	*6.800	5.030	*4.880	4.620	9,41
	4,5									*8.790	6.640	7.600	4.920	*4.880	4.150	9,91
	3,0					*15.260	13.610	*11.620	8.840	*9.790	6.330	7.430	4.760	*5.020	3.890	10,16
	1,5					*18.500	12.480	*13.370	8.280	9.560	6.020	7.240	4.590	*5.320	3.790	10,18
	0 (Ground)			*8.060	*8.060	*20.190	11.850	13.040	7.870	9.280	5.770	7.090	4.450	*5.800	3.840	9,97
	-1,5	*8.100	*8.100	*12.210	*12.210	*20.440	11.600	12.790	7.650	9.120	5.620	7.010	4.380	6.480	4.060	9,53
	-3,0	*12.710	*12.710	*17.650	*17.650	*19.500	11.620	12.740	7.610	9.090	5.600			7.280	4.550	8,80
	-4,5	*18.210	*18.210	*23.960	23.880	*17.240	11.830	12.880	7.740	9.250	5.740			8.910	5.550	7,71
	-6,0			*17.350	*17.350	*12.860	12.300	*9.030	8.140					*8.850	8.030	6,06

MACHINE CAPACITIES

- Notes:
- 1. Ratings are based on ISO 10567 : 2007.
 - 2. Machine capacity does not exceed 75% of tipping load with the machine on firm, level ground or 87% full hydraulic capacity.
 - 3. The load point is the center-line of the bucket pivot mounting pin on the arm.
 - 4. * Indicates load limited by hydraulic capacity.
 - 5. 0 m = Ground.
 - 6. Machine specifications are determined excluding the bucket.



A: Load radius
B: Load point height
C: Machine capacity



For machine capacities, subtract installed attachment and quick hitch weight from machine capacities.
To determine lifting capacities, apply "Rating over-side or 360 degrees" machine capacities from the table and deduct weight of installed attachment and quick hitch.
Optional feature may affect machine performance.









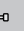





ZX350H-7G

Rating over-front Rating over-side or 360 degrees Unit : kg

Conditions	Load point height m	Load radius												At max. reach		
		1,5 m		3,0 m		4,5 m		6,0 m		7,5 m		9,0 m				
																meter
Boom 6,40 m H Arm 2,67 m H Counter Weight 6.900 kg	6,0							*10.250	9.820	*9.510	6.830			8.540	6.100	8,00
	4,5					*14.810	14.420	*11.580	9.320	9.320	6.620			7.490	5.310	8,58
	3,0					*18.230	13.090	12.680	8.750	9.030	6.350			6.980	4.910	8,87
	1,5							12.160	8.290	8.750	6.090			6.830	4.780	8,89
	0 (Ground)					18.850	12.090	11.870	8.030	8.580	5.930			7.020	4.890	8,65
	-1,5			*13.800	*13.800	18.890	12.120	11.800	7.960	8.540	5.890			7.660	5.320	8,13
	-3,0			*22.040	*22.040	*17.090	12.340	11.930	8.080					9.090	6.290	7,26
	-4,5			*16.720	*16.720	*13.240	12.790							*9.810	8.710	5,88
	-6,0															
Boom 6,40 m H Arm 3,20 m H Counter Weight 6.900 kg	6,0									*8.820	6.920			*6.190	5.460	8,58
	4,5							*10.810	9.480	9.410	6.690	6.970	4.940	*6.210	4.820	9,12
	3,0					*16.980	13.490	*12.480	8.880	9.080	6.390	6.830	4.810	6.370	4.480	9,39
	1,5					19.350	12.510	12.250	8.360	8.770	6.110	6.680	4.670	6.240	4.360	9,42
	0 (Ground)					18.870	12.100	11.890	8.030	8.550	5.900	6.580	4.580	6.390	4.440	9,19
	-1,5			*13.210	*13.210	18.780	12.020	11.740	7.900	8.460	5.810			6.880	4.780	8,70
	-3,0	*15.530	*15.530	*20.970	*20.970	*18.060	12.160	11.790	7.950	8.520	5.880			7.960	5.510	7,90
	-4,5			*19.710	*19.710	*14.940	12.520	*11.230	8.210					*9.530	7.160	6,66
	-6,0															

ZX350LCH-7G

 Rating over-front
  Rating over-side or 360 degrees
 Unit : kg

Conditions	Load point height m	Load radius												At max. reach		
		1,5 m		3,0 m		4,5 m		6,0 m		7,5 m		9,0 m				
																meter
Boom 6,40 m H Arm 2,67 m H Counter Weight 6.900 kg	6,0							*10.250	9.970	*9.510	6.940			*9.440	6.200	8,00
	4,5					*14.810	14.640	*11.580	9.470	*10.020	6.730			8.430	5.410	8,58
	3,0					*18.230	13.310	*13.140	8.900	10.200	6.460			7.860	5.010	8,87
	1,5							13.900	8.440	9.920	6.210			7.710	4.870	8,89
	0 (Ground)					*20.170	12.320	13.600	8.180	9.730	6.040			7.940	4.990	8,65
	-1,5			*13.800	*13.800	*19.160	12.350	13.520	8.110	9.690	6.010			8.670	5.420	8,13
	-3,0			*22.040	*22.040	*17.090	12.560	*13.170	8.230					*10.290	6.410	7,26
	-4,5			*16.720	*16.720	*13.240	13.010							*9.810	8.860	5,88
	-6,0															
Boom 6,40 m H Arm 3,20 m H Counter Weight 6.900 kg	6,0									*8.820	7.040			*6.190	5.550	8,58
	4,5							*10.810	9.630	*9.450	6.800	*7.350	5.030	*6.210	4.910	9,12
	3,0					*16.980	13.710	*12.480	9.030	10.260	6.510	7.700	4.900	*6.430	4.570	9,39
	1,5					*19.480	12.730	*13.920	8.510	9.940	6.220	7.550	4.760	*6.880	4.450	9,42
	0 (Ground)					*20.230	12.320	13.620	8.180	9.710	6.020	7.450	4.670	7.230	4.530	9,19
	-1,5			*13.210	*13.210	*19.690	12.250	13.460	8.050	9.610	5.930			7.790	4.870	8,70
	-3,0	*15.530	*15.530	*20.970	*20.970	*18.060	12.390	13.520	8.100	9.680	5.990			9.020	5.620	7,90
	-4,5			*19.710	*19.710	*14.940	12.740	*11.230	8.360					*9.530	7.300	6,66
	-6,0															

EQUIPMENT

● : Standard equipment ○ : Optional equipment – : Not applicable

ENGINE	ZX350-7G / ZX350LC-7G	ZX350H-7G / ZX350LCH-7G
Air cleaner double filters	●	●
Alternator 50 A	●	●
Auto idle system	●	●
Auto shut-down control	●	●
Cartridge-type engine oil filter	●	●
Cartridge-type fuel main filter	●	●
Cartridge-type fuel pre-filter with water separator	●	●
Cold fuel resistance valve	●	●
ConSite OIL (sensor)*	●	●
Dry-type air filter with evacuator valve (with air filter restriction indicator)	●	●
Dust-proof indoor net	●	●
ECO/PWR mode control	●	●
Electrical fuel feed pump	●	●
Engine oil drain coupler	●	●
Expansion tank	●	●
Fan guard	●	●
Fuel cooler	●	●
Isolation-mounted engine	●	●
Maintenance free pre-cleaner	○	○
Radiator, oil cooler and intercooler	●	●

HYDRAULIC SYSTEM	ZX350-7G / ZX350LC-7G	ZX350H-7G / ZX350LCH-7G
Auto power lift	●	●
ConSite OIL (sensor)*	○	○
Control valve with main relief valve	●	●
High mesh full flow filter	●	●
High mesh full flow filter with restriction indicator	○	○
One extra port for control valve	●	●
Pilot filter	●	●
Power boost	●	●
Suction filter	●	●
Work mode selector	●	●

CAB	ZX350-7G / ZX350LC-7G	ZX350H-7G / ZX350LCH-7G
All-weather sound suppressed steel cab	●	●
Auto control air conditioner	●	●
Bluetooth® integrated radio	●	●
Console height adjustment	●	●
CRES VII (center pillar reinforced structure) cab	●	●
Drink holder with hot and cool function	●	●
Electric double horn	●	●
Engine shut-off switch	●	●
Equipped with reinforced, tinted (green color) glass windows	●	●
Evacuation hammer	●	●
Floor mat	●	●
Fluid-filled elastic mounts (4)	●	●
Footrest	●	●
Front guard : mesh (lower)	○	○
Front guard : mesh (lower & upper)	○	○
Front guard : mesh (lower), vertical bar (upper)	○	○
Front guard : vertical bar (lower & upper)	○	○
Front window washer (1 point)	●	●
Glove compartment	●	●
Hands-free calling device	○	○
Hot and cool box	●	●
Intermittent windshield wipers	●	●
Key cylinder light	●	●
LED room light	●	●
Magazine rack	●	●
OPG front guard Level I (ISO10262:1998) compliant	○	○
OPG front guard level II (ISO10262:1998) compliant	○	○
OPG top guard Level I (ISO10262:1998) compliant	○	○
OPG top guard Level II (ISO10262:1998) compliant	○	○
Pilot shut-off lever	●	●
Power outlet 12 V	○	○
Power outlet 24 V	●	●
Rain guard (without OPG front guard)	○	○
Rear tray	●	●
Retractable seat belt	●	●
ROPS (ISO12117-2:2008) compliant cab	●	●
ROPS (ISO12117-2:2008) non compliant cab	○	○
Rubber radio antenna	●	●
Seat : non suspension (fabric)	●	●
Seat : mechanical suspension seat	○	○
Seat adjustment part : backrest, armrest, height and angle, slide forward / back	●	●
Seat belt reminder	●	●
Short wrist control levers	●	●
Smartphone holder	●	●
Stereo speakers (2)	●	●
USB power supply	○	○
Windows on front, upper, lower and left side can be opened	●	●
8" monitor	●	●

● : Standard equipment ○ : Optional equipment – : Not applicable

MONITOR SYSTEM	ZX350-7G / ZX350LC-7G	ZX350H-7G / ZX350LCH-7G
Alarms: overheat, engine warning, engine oil pressure, alternator, minimum fuel level, hydraulic filter restriction, air filter restriction, work mode, overload, etc	●	●
Alarm buzzers: overheat, engine oil pressure, overload, trouble, etc	●	●
Display of meters: water temperature, hour, fuel rate, clock, etc	●	●
Other displays: work mode, auto-idle, glow, rear view monitor, operating conditions, etc	●	●
35 languages selection	●	●

LIGHTS	ZX350-7G / ZX350LC-7G	ZX350H-7G / ZX350LCH-7G
Additional boom LED light with cover	○	○
Additional cab roof front LED lights	○	○
Additional cab roof rear LED lights	○	○
LED lights for camera (side and rear view camera)	○	○
Working LED lights (2)	●	●

UPPER STRUCTURE	ZX350-7G / ZX350LC-7G	ZX350H-7G / ZX350LCH-7G
AERIAL ANGLE (270° view camera system)	○	○
Batteries	●	●
Counterweight 6.350 kg	●	–
Counterweight 6.900 kg	–	●
Electric fuel refilling pump with auto stop	○	○
Electric fuel refilling pump with auto stop and filter	○	○
Fuel level float	●	●
Hydraulic oil level gauge	●	●
Lockable fuel refilling cap	●	●
Lockable machine covers	●	●
Lockable tool box	●	●
Platform handrail	●	●
Platform handrail (additional)	○	○
Rear view camera	○	○
Skid-resistant plates	●	●
Swing parking brake	●	●
Undercover	●	●
Undercover 6,0 mm reinforced	○	●
Utility space	●	●
2 way disconnect switch	●	●

UNDERCARRIAGE	ZX350-7G / ZX350LC-7G	ZX350H-7G / ZX350LCH-7G
Bolt-on sprocket	●	●
Full track guard	–	○
Greasing type track adjuster	●	●
Reinforced track links with pin seals	●	●
Shoe: 600 mm triple grouser	●	–
Shoe: 600 mm triple grouser reinforced	○	●
Shoe: 700 mm triple grouser	○	○
Shoe: 800 mm triple grouser	○	○
Tie down hooks (4)	●	●
Towing hook	●	●
Track guards (3 each side)	●	–
Track undercover	○	○
Travel direction mark on track frame	●	●
Travel motor covers	●	●
Travel parking brake	●	●
Upper and lower rollers	●	●

FRONT ATTACHMENTS	ZX350-7G / ZX350LC-7G	ZX350H-7G / ZX350LCH-7G
Arm tip remote lubrication	●	●
Arm 2,67 m	○	–
Arm 2,67 m H	–	○
Arm 3,20 m	●	–
Arm 3,20 m H	–	●
Arm 4,00 m	○	–
Boom 6,40 m	●	–
Boom 6,40 m H	–	●
Bucket 1,40 m³ (ISO7451 : 2007 heaped)	●	–
Bucket 1,38 m³ rock (ISO7451 : 2007 heaped)	○	●
Casted bucket link A	●	●
Centralized lubrication system	●	●
Dirt seal on all bucket pins	●	●
Flanged pin	●	●
HN bushing	●	●
Reinforced link B	–	●
Reinforced resin thrust plate	●	●
WC (tungsten-carbide) thermal spraying	●	●
Welded bucket link A	○	○

ATTACHMENTS	ZX350-7G / ZX350LC-7G	ZX350H-7G / ZX350LCH-7G
Attachment basic piping	○	○
Breaker and crusher piping	○	○
High mesh full flow filter with restriction indicator	○	○
Line filter	○	○
Parts for breaker and crusher	○	○
2 pump combined flow for attachment basic piping	○	○

MISCELLANEOUS	ZX350-7G / ZX350LC-7G	ZX350H-7G / ZX350LCH-7G
ConSite	○	○
Exclusive Global e-Service telematics	●	●
Onboard information controller	●	●
Standard tool kit	●	●

Standard and optional equipment may vary by country, so please consult authorized dealer for details.

* Engine oil and hydraulic oil monitoring sensor.

MEMO

[illegible]

Lined area for writing notes, consisting of multiple horizontal lines.

HITACHI

Reliable Solutions



REPUTATIONS ARE **BUILT ON IT.**

A legacy built on quality products and service: this is our story. For more than 50 years, Hitachi Construction Machinery Americas has been the regional partner of Hitachi Construction Machinery Group, headquartered in Japan.

Well-respected in North America since the 1970s when Hitachi Construction Machinery Group led a prominent joint venture, Hitachi Construction Machinery Americas recently established a new facility in Newnan, GA. that is poised to support local customers for years to come.

With input from construction professionals on every continent, our machinery is manufactured at state-of-the-art facilities in Japan and exported for sale across the world.

Your local Hitachi Construction Machinery Americas dealer has the resources, expertise, and personnel to work with you, ensuring the best return on investment. Utilizing carefully designed programs and services in conjunction with extensive digital resources, Hitachi Construction Machinery Americas provides a focused approach to supporting you, your business, and the durable construction machinery that your operation relies upon.

Machines in this brochure may be representative of global products not sold in the Latin American market, and used for illustrative purposes only. Options may not be available in all markets. Before operating this machine (incl. satellite communication system) outside of its original country of sale, it may be necessary to make modifications to comply with local regulatory, safety, and legal requirements. Please do not export or operate this machine outside the country of its intended use until such compliance has been confirmed. Contact your dealer for more assistance with regional compliance.

