

ZW-6 series

HITACHI

Reliable solutions

# ZW550

Tier 4 Final  
Certified

**520 hp** 382 kW  
Engine Output, Max, Gross  
(ISO 14396)

**517 hp** 380 kW  
Engine Output, Max, Net  
(ISO 9249)

**8.3 yd<sup>3</sup>** 6.3 m<sup>3</sup>  
Bucket capacity

**104,880 lbs** 47,573 kg  
Operating weight



# ZW550-6 NO COMPROMISE

Ideal for mining and quarrying, the new ZW-6 large wheel loaders have been designed to be exceptionally reliable and durable. They are built to deliver the highest levels of productivity in the most challenging working conditions.

Manufactured using market-leading technology and high-quality components, the ZW550-6 also offers excellent performance without compromising on efficiency, thanks to low levels of fuel consumption.



**6. RENOWNED RELIABILITY**



**8. UNDENIABLE DURABILITY**



**10. POWERFUL VERSATILITY**



**12. QUALITY BUILT-IN**



**14. SUPERIOR TECHNOLOGY**

*Machine representative of global product.  
Options may not be available in all markets.*

# DEMAND PERFECTION

Designed with an emphasis on operator comfort and safety, and the environment, the ZW550-6 has been developed to perfection. It incorporates innovative technology and industry-leading engineering to deliver exceptional productivity at the lowest possible cost of ownership.



## Powerful performance

Quick power switch increases engine output when required.



## Industry-leading safety

360° visibility from the cab.



## Quiet operation

Reduced noise levels inside the cab.



## Easy to operate

Traction Control adjusts engine speed to reduce tire spin, ultimately increasing tire life.



## Smooth operation

Ride control minimizes machine pitching.



## Strong components

Full box rear frame is a robust structure for heavy applications.





**Durable design**

Low mount lift arm cylinder prevents twisting of the front frame.



**Low emissions**

SCR system without DPF reduces NO<sub>x</sub> from exhaust gas.



**Environmentally friendly**

More than 90% of parts are recyclable.



**Improved fuel efficiency**

Lock-up transmission and Tier 4 Final-certified engine.



**Convenient access**

Easy-to-open wide engine covers.



**Superior comfort**

Spacious cab with several storage compartments.



**User-friendly**

Effortless control with the Joystick Steering System.

*Machine representative of global product. Options may not be available in all markets.*

# RENOWNED RELIABILITY

Hitachi Construction Machinery Americas Inc. construction machinery is synonymous with reliability. The latest range of ZW-6 large wheel loaders are designed to operate reliably for long periods in busy mines and quarries. Easy to maintain, they have high levels of accessibility and minimal downtime.

## Quick access

The engine covers open fully for the convenience of technical support. The urea tank is also located for safe and easy access from ground level. These help to ensure routine maintenance is completed quickly to ensure a reliable performance.

## Improved fuel efficiency

The lock-up torque converter has improved the fuel efficiency of the ZW550-6, which reduces running costs.

## Easy maintenance

For safer and easier maintenance, the battery disconnect switch is standard. This helps to avoid electrical accidents

and retain battery energy during long-term storage.

## Reduced costs

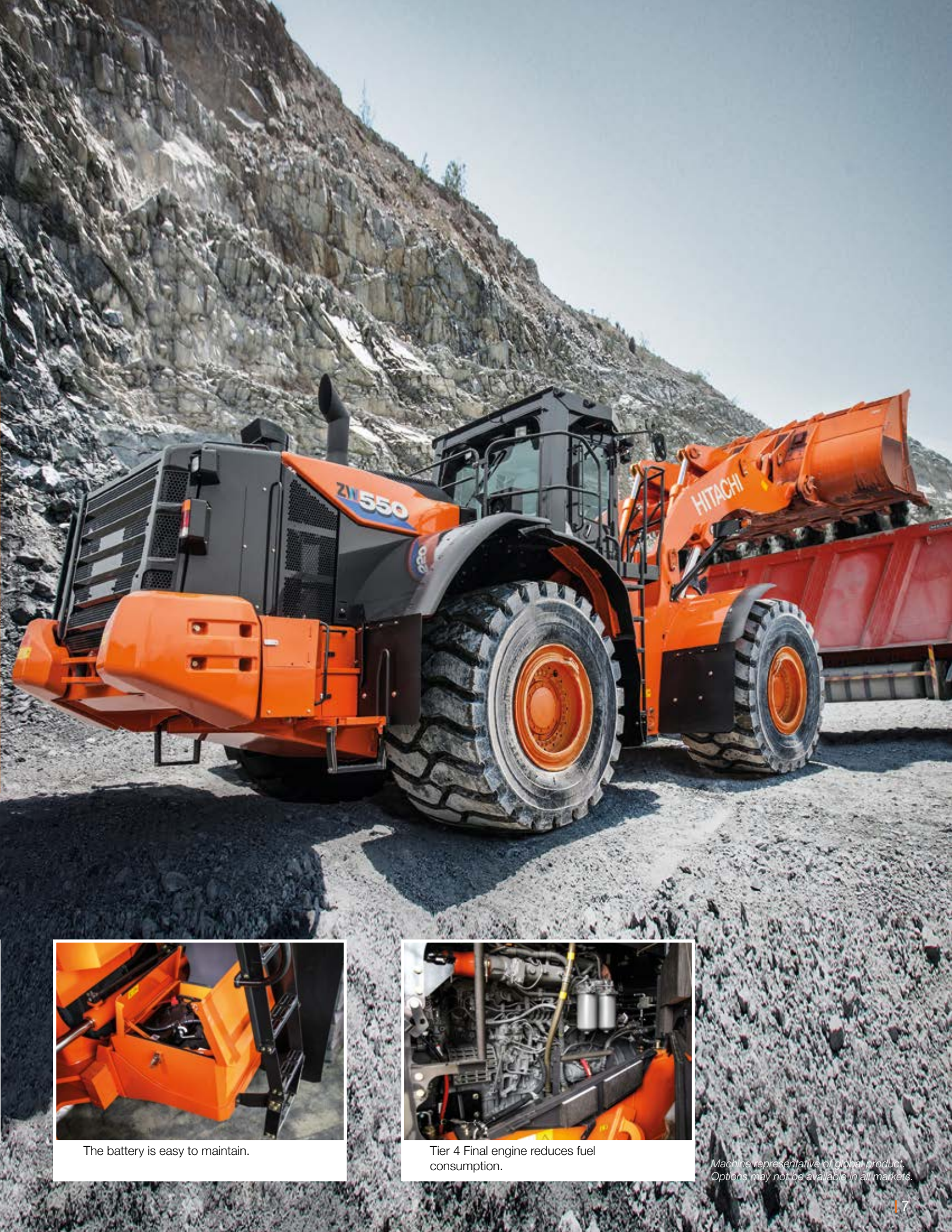
The new Tier 4 Final certified engine does not require a diesel particulate filter, which further reduces fuel consumption and maintenance costs.

## Reliable performance

The lift arm contributes to the reliable performance of the ZW550-6. Its speed has been improved and it lowers smoothly for increased productivity. It is easy to control using the auto leveller.



Easy access to the engine compartment.



The battery is easy to maintain.



Tier 4 Final engine reduces fuel consumption.

*Machine representative of global product. Options may not be available in all markets.*



HITACHI

550



New rear grill protects radiator compartment.



Durable radiators are corrosion resistant.

*Machine representative of product.  
Options may not be available in all markets.*





**i** Hitachi wheel loaders are tested extensively in job site conditions around the world, in extreme temperatures.



# UNDENIABLE DURABILITY

Mines and quarries are tough working environments for construction machinery, and demand the utmost reliability and durability. The latest range of ZW-6 wheel loaders has been designed and engineered to meet these needs, with a variety of reinforced components, strengthened features and enhanced protection.



The standard belly guard provides added protection.



### Increased protection

The newly designed rear grill prevents raw material from the job site entering the radiator compartment. This provides greater protection.

### Durable materials

High-quality radiators improve resistance to corrosion and enhance the overall durability of the ZW550-6 wheel loader.

### Robust design

The ZW550-6 has been designed with a full box rear frame. This provides a robust structure that is capable of handling the rigors of heavy applications.

### Additional reinforcement

The standard front and rear belly guards protect the machine powertrain and driveshaft from potential damage caused by materials on the ground.

### Strong structure

The low mount lift arm cylinder on the ZW550-6 creates a strong structure that guards against twisting of the front frame.

### Efficient cooling

The reversible cooling fan, activated manually or automatically every 30 minutes, ensures that the radiator stays clean during operation.

# POWERFUL VERSATILITY

The ZW550-6 has been designed with several features that enhance efficiency and safety, which makes it suitable for working on a variety of job sites. It is easy to maneuver, smooth to operate and user-friendly, and offers high productivity thanks to a powerful digging force, and substantial lifting and loading capacity.

## **Improved fuel economy**

An auto power up function increases engine rpm as the ZW550-6 slows down when travelling uphill. This enhances its overall fuel economy by ensuring a shorter uphill journey time.

## **Efficient flexibility**

The quick power switch increases engine output when more power is instantly required, or when driving uphill.

## **Effective control**

To ensure a smooth drive on all kinds of terrain, the ride control feature prevents unnecessary pitching via the movement of lift arm cylinders.

## **High productivity**

The simultaneous movement of the bucket and lift arm ensures a smooth digging operation. The bucket is prioritized after unloading so that the wheel loader quickly returns to digging, which helps to increase productivity.



Auto power up function helps to enhance fuel economy.



The ride control feature ensures smooth performance.



The quick power switch increases power when required.

*Machine representative of global product.  
Options may not be available in all markets.*



ZW550

HITACHI



The comfortable cab offers excellent all-round visibility of the job site.



Flow control system ensures smooth movement of the lift arm.

*Machine representative of global product.  
Options may not be available in all markets.*



**i** The final pre-delivery inspection procedure for each Hitachi wheel loader is typical of Hitachi's dedication to manufacturing products of unfailing quality in response to customer needs.



# QUALITY BUILT-IN

Hitachi ZW-6 large wheel loaders are at the forefront of the industry in terms of comfort, safety and quality. They offer the best all-round visibility and are among the quietest on the market. Incorporating the finest design elements and superior components, the ZW550-6 is the epitome of quality engineering.



### Reduced emissions

A selective catalytic reduction (SCR) system injects urea into exhaust gas to reduce nitrous oxide from emissions. This industry leading technology not only helps the environment, but also complies with Tier 4 Final emission regulations.

### Improved comfort

The flow control system ensures the smooth movement of the lift arm when lowering. This means less pitching and a more comfortable experience for the operator.

### Excellent visibility

The 360° panoramic view of the spacious cab creates a comfortable working environment, and helps to increase safety and productivity. The rear-view camera, in combination with the unique two-piece counterweight, also contributes to excellent all-round visibility and safety on the job site.

### User-friendly operation

The standard Joystick Steering System enables operators to reach high levels of productivity with effortless steering, and incorporates a number of useful functions.

# SUPERIOR TECHNOLOGY

Hitachi ZW-6 large wheel loaders are driven by unique technology, incorporating innovative features, state-of-the-art software and advanced components. In this way, they deliver high levels of productivity and efficiency, as well as low running costs, and meet the evolving needs of North American customers.

## **Reduced maintenance**

Our Tier 4 Final certified engine contains a high-volume cooled exhaust gas recirculation (EGR) system, a common rail-type fuel injection system and a diesel oxidation catalyst (DOC) without DPF. This helps to reduce fuel costs and maintenance requirements.

## **Fewer emissions**

The after-treatment device with integrated silencer is designed to reduce emissions as well as noise levels. It features a DOC, urea mixing pipe and SCR system. An indicator on the monitor shows the operator when the urea tank needs refilling.

## **Multifunctional display**

A large LCD color monitor shows all the information required to operate the Hitachi ZW-6 wheel loader. This includes power modes, oil temperature, and fuel and urea levels, which is useful for easy maintenance. It also includes the display for the easy-to-use rear camera, which enhances visibility for a safe operation.

## **Smaller environmental impact**

The standard auto shutdown feature helps to prevent fuel waste, as well as reduce noise levels, exhaust emissions and NOx levels of the ZW550-6 wheel loader.

## **Remote monitoring**

Global e-Service allows ZW550-6 owners to monitor their Hitachi machines remotely via Owner's Site (24/7 online access) and ConSite (an automatic monthly report). These help to maximize efficiency, minimize downtime and improve overall performance.

## **Smooth operation**

Drive-train improvements make transmission gear engagement smoother and result in a more comfortable operation. The traction control system prevents slippage during digging and this helps to reduce tire wear and enhance fuel efficiency.



*Machine representative of global product.  
Options may not be available in all markets.*



The LCD monitor shows the machine's status and settings.



The urea tank is located for safe and easy access from ground level.



The SCR system reduces emissions and noise levels.

# REDUCING THE TOTAL COST OF OWNERSHIP

Hitachi Construction Machinery Americas Inc. has created the After Sales Solutions Program to ensure optimum efficiency, as well as minimal downtime, reduced running costs and high resale values.

## Global e-Service

Hitachi Construction Machinery Americas Inc. has developed two remote monitoring systems as part of its Global e-Service online application. Owner's Site and ConSite are an integral part of the wheel loader, which sends operational data daily via GMS to [www.globaleservice.com](http://www.globaleservice.com). This allows immediate access to the Owner's Site, and the vital information that is required for support on job sites.

Comparing the ratio of operating and non-operating hours helps to enhance efficiency. Effective management of maintenance programs helps to

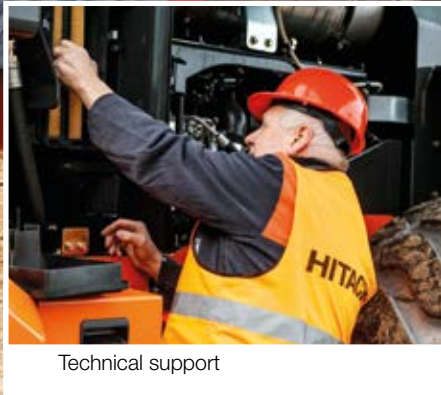
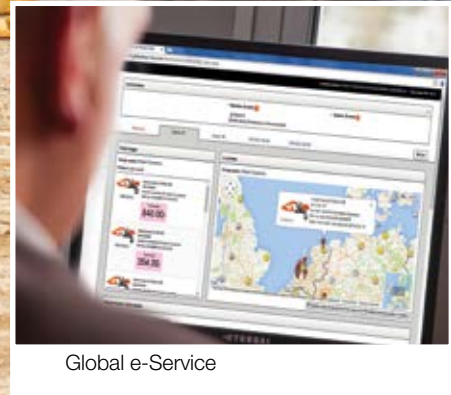
maximize availability. Running costs can also be managed by analyzing the fuel consumption. The location and movements of each machine are clearly displayed for essential planning.

An automatic service report – ConSite – sends a monthly email summarizing the information from Global e-Service for each machine. This includes: daily working hours and fuel consumption data; statistics on the operating mode ratio, plus a comparison for fuel consumption/efficiency, and CO<sub>2</sub> emissions.

## Technical support

Each Hitachi service technician receives full technical training from Hitachi Construction Machinery Americas Inc. in the USA. These sessions provide access to the same technical knowledge available within the Hitachi quality assurance departments and design centers. Technicians combine this global expertise with the local language and culture of the customer to provide the highest level of after-sales support.





## Extended warranty and service contracts

Every new Hitachi ZW-6 model is covered by a full manufacturer's warranty. For extra protection – due to severe working conditions or to minimize equipment repair costs – Hitachi Construction Machinery Americas Inc. dealers offer an extended warranty and comprehensive service contracts. These can help to optimize the performance of each machine, reduce downtime and ensure higher resale values.

## Parts

Hitachi Construction Machinery Americas Inc. offers a wide range, and high availability, of parts located in the new 400,000 sq. ft. Parts Depot centrally located just outside of Atlanta, Georgia.

- Hitachi Genuine Parts: allow machines to work longer, with lower running and maintenance costs.
- Hitachi Select Parts and Genuine Parts: are of proven quality and come with the manufacturer's warranty.

- Performance Parts: to cope with highly demanding conditions, they have been engineered for greater durability, better performance or longer life.
- Genuine Hitachi rebuilt components are available from Hitachi Construction Machinery Americas Inc.'s in-house rebuild center and are offered with a standard warranty.

Whatever the choice, the renowned quality of Hitachi construction machinery is assured.



*Machine representative of global product.  
Options may not be available in all markets.*

# BUILDING A BETTER FUTURE

Established in 1910, Hitachi, Ltd. was built upon a founding philosophy of making a positive contribution to society through technology. This is still the inspiration behind the Hitachi group's reliable solutions that answer today's challenges and help to create a better world.

Hitachi, Ltd. is now one of the world's largest corporations, with a vast range of innovative products and services. These have been created to challenge convention, improve social infrastructure and contribute to a sustainable society.



Hitachi Construction Machinery Co., Ltd. (HCM) was founded in 1970 as a subsidiary of Hitachi, Ltd. and has become one of the world's largest construction equipment suppliers. A pioneer in producing hydraulic excavators, HCM also manufactures wheel loaders, rigid dump trucks, crawler cranes and special application machines at state-of-the-art facilities across the globe.

Incorporating advanced technology, Hitachi construction machinery has a reputation for the highest quality standards. Suitable for a wide range of industries, it is always

hard at work around the world – helping to create infrastructure for a safe and comfortable way of living, developing natural resources and supporting disaster relief efforts.

Hitachi ZW wheel loaders are renowned for being reliable, durable and versatile – capable of delivering the highest levels of productivity under the most challenging of conditions. They are designed to provide owners with a reduced total cost of ownership, and operators with the ultimate level of comfort and safety.

# SPECIFICATIONS

Model Name: ZW550-6, EPA Tier 4 Final/EU Stage IV Certified

## ENGINE

|                         |  |
|-------------------------|--|
| Gross power (ISO 14396) | 520 HP/1,800 RPM<br>(382 kW/1,800 RPM)   |
| Net power (ISO 9249)    | 517 HP/1,800 RPM<br>(380 kW/1,800 RPM)   |
| Make/Model              | Isuzu 6WG1 diesel engine   |
| Type                    | 4-cycle, water-cooled, direct injection with turbocharger and air cooled intercooler |
| Fuel type               | #2 Diesel (Requires ultra-low sulfur fuel.)  |
| Fuel injection pump     | Electronically controlled, common rail type  |
| Governor                | All speed electrical type  |
| Cooling module type     | Forced circulation type  |
| Number of cylinders     | 6  |
| Bore and stroke         | 5.8" x 6.1" (147mm x 154mm)  |
| Total displacement      | 956.9 in <sup>3</sup> (15.68 liters)   |
| Alternator              | AC 24V–110A (2.64 kW)  |
| Air cleaner             | Dry type (double element) with restriction indicator                                 |
| Starter motor           | DC 24V–9.5 HP (7.0 kW)   |
| Battery                 | 12V–1300 CCA (170Ah), 2 units  |

## TORQUE CONVERTER AND TRANSMISSION

| Torque converter | 3-element, single-stage, 1-phase w/lock-up clutch  |                          |                              |                             |
|------------------|--|--------------------------|------------------------------|-----------------------------|
| Transmission     | Torque converter, planetary gear type powershift with computer-controlled automatic shift and manual shift features included |                          |                              |                             |
|                  | Normal Mode  | Power Mode               | Normal Mode w/Lock-up clutch | Power Mode w/Lock-up clutch |
| Speeds: Forward  | 1st: 4.3 MPH<br>(7.0 km/hr)  | 4.4 MPH<br>(7.1 km/hr)   | 8.3 MPH<br>(13.3 km/hr)      | 8.3 MPH<br>(13.3 km/hr)     |
|                  | 2nd: 7.9 MPH<br>(12.7 km/hr)   | 8.0 MPH<br>(12.9 km/hr)  | 13.9 MPH<br>(22.3 km/hr)     | 13.9 MPH<br>(22.3 km/hr)    |
|                  | 3rd: 12.9 MPH<br>(20.7 km/hr)  | 12.9 MPH<br>(20.7 km/hr) | 21.8 MPH<br>(35.1 km/hr)     | 21.8 MPH<br>(35.1 km/hr)    |
|                  | 4th: 21.7 MPH<br>(35.0 km/hr)  | 21.7 MPH<br>(35.0 km/hr) |                              |                             |
| Speeds: Reverse  | 1st: 4.8 MPH<br>(7.8 km/hr)  | 4.8 MPH<br>(7.8 km/hr)   | 8.8 MPH<br>(14.1 km/hr)      | 8.8 MPH<br>(14.1 km/hr)     |
|                  | 2nd: 8.8 MPH<br>(14.1 km/hr)   | 8.8 MPH<br>(14.1 km/hr)  | 15.3 MPH<br>(24.6 km/hr)     | 15.3 MPH<br>(24.6 km/hr)    |
|                  | 3rd: 14.0 MPH<br>(22.6 km/hr)  | 14.0 MPH<br>(22.6 km/hr) |                              |                             |

## SYSTEMS REFILL CAPACITY

| LOCATION                                    | GALLONS   | LITERS  |
|---|-----------|---------|
| Fuel tank (diesel fuel)                     | 171.2     | 648     |
| Engine lubricant (including oil pan)        | 15.1      | 57      |
| Engine coolant                              | 21.7      | 82      |
| T/M & T/C                                   | 23.8      | 90      |
| Axle (front/rear)                           | 47.6/47.6 | 180/180 |
| Hydraulic oil tank                          | 79.3      | 300     |
| Hydraulic system (including hydraulic tank) | 145.3     | 550     |
| DEF/AdBlue® tank                            | 15.1      | 57      |

## HYDRAULIC AND STEERING SYSTEM

|                           |  |  |
|---------------------------|--|--|
| Steering type             | Articulated frame steering   |  |
| Steering mechanism        | Hydraulic power steering unit, pilot operated type   |  |
| Lift (boom) cylinder      | Two (2) double-acting piston type:<br>7.5" x 5.2" (190mm x 1132mm)   |  |
| Tilt (bucket) cylinder    | Two (2) double-acting piston type:<br>6.3" x 30.2" (160mm x 767mm)   |  |
| Steering cylinder         | Two (2) double-acting piston type:<br>3.9" x 28.3" (100mm x 720mm)   |  |
| Main oil pump             | Variable displacement axial plunger pump:<br>100.4 GPM/972 PSI @ 1,800 RPM<br>(380 LPM/6.9 MPa (70 kgf/cm <sup>2</sup> ) @ 1,800 RPM)    |  |
| Brake & Fan & Pilot pump  | Variable displacement axial plunger pump:<br>27.7 GPM/3,017 PSI @ 1,800 RPM<br>(105 LPM/28.0 MPa (266 kgf/cm <sup>2</sup> ) @ 1,800 RPM) |  |
| Relief valve set pressure | Control  | 4,554 psi, 31.4 MPa (320 kgf/cm <sup>2</sup> ) |
|                           | Steering   | 3,989 psi, 27.5 MPa (280 kgf/cm <sup>2</sup> ) |

## HYDRAULIC CYCLE TIME\* front end loading, Z bar linkage system

|                             | Normal Mode | Power Mode |
|-----------------------------|-------------|------------|
| Lifting time (at full load) | 8.5 sec.    | 8.5 sec.   |
| Lowering time (empty)       | 4.5 sec.    | 4.5 sec.   |
| Bucket dumping time         | 2.3 sec.    | 2.3 sec.   |
| TOTAL                       | 15.3 sec.   | 15.3 sec.  |

\* Measured in accordance with SAE J732C

## AXLE SYSTEM

|                                 |   |
|---------------------------------|---|
| Drive system                    | 4-wheel drive                                 |
| Front and rear axle             | Full-floating type                            |
| Tires                           | 35/65 R33 (L-5)                               |
| Reduction and differential gear | Single stage reduction with conventional type |
| Final reduction gear            | Outboard mounted, heavy duty planetary gear   |
| Oscillation angle               | Total 24 (+12, -12)°                          |

## BRAKE SYSTEM

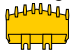
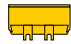
|                         |  |
|-------------------------|--|
| Service brakes          | Outboard mounted fully hydraulic 4-wheel disc brake. Front and rear independent brake circuit. |
| Parking/Emergency brake | Spring-applied, hydraulically-released. Located in transmission.                               |

## Remarks

- Materials and specifications are subject to change without notice and without any obligation on the part of the manufacturer.
- This information, while believed to be completely reliable, is not to be taken as warranty for which we assume legal responsibility.
- Dumping clearance and reach are measured from bucket edge in accordance with SAE J732C.
- Counterweight should not be used with tire ballast.
- This specification sheet may contain attachments and optional equipment not available in your area.

Please contact your Hitachi Construction Machinery Americas authorized local dealer for additional information.

## BUCKET DATA

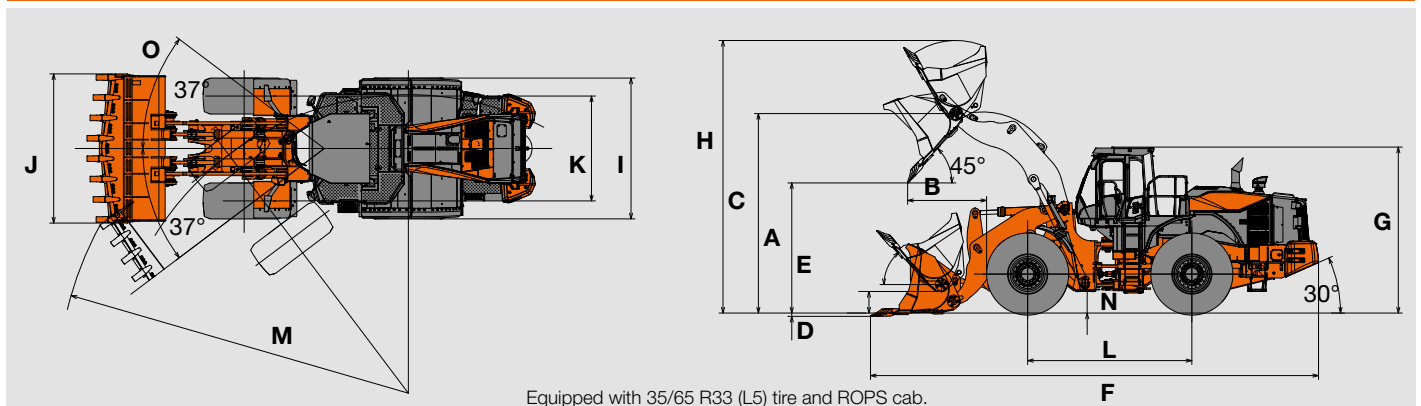
|                                      |  |                                      |                     | Standard Arm  |                     | High Lift Arm   |  |
|--------------------------------------|--|--------------------------------------|---------------------|---|---------------------|---|--|
|                                      |  |                                      |                     | Rock Bucket   |                     | General Purpose   |  |
|                                      |  |                                      |                     | V-Edge  |                     | Straight Edge   |  |
|                                      |  |                                      |                     | Weld-on Adaptor & Teeth/<br>Segment Edge Edge                                     |                     | Bolt-on Cutting Edge  |  |
|                                      |  |                                      |                     |  |                     |  |  |
|                                      |  |                                      |                     | Bolt-on Cutting Edge  |                     | Bolt-on Cutting Edge  |  |
| Capacity                             | Heaped   | yd <sup>3</sup><br>(m <sup>3</sup> ) | 8.3<br>(6.3)        | 9.0<br>(6.9)  | 9.0<br>(6.9)        |   |  |
|                                      | Struck   | yd <sup>3</sup><br>(m <sup>3</sup> ) | 7.3<br>(5.6)        | 8.0<br>(6.1)  | 8.0<br>(6.1)        |   |  |
| <b>A</b>                             | Maximum dumping clearance                        | ft-in<br>(mm)                        | 10'8"<br>(3,270)    | 11'6"<br>(3,520)  | 13'<br>(3,965)      |   |  |
| <b>B</b>                             | Dumping reach (to front of bucket edge or tooth) | ft-in<br>(mm)                        | 6'8"<br>(2,045)     | 6'<br>(1,825)   | 6'4"<br>(1,925)     |   |  |
| <b>C</b>                             | Max. hinge pin height                            | ft-in<br>(mm)                        | 16'6"<br>(5,040)    | 16'6"<br>(5,040)  | 18'<br>(5,480)      |   |  |
| <b>D</b>                             | Digging depth (with bucket level)                | in<br>(mm)                           | 6"<br>(165)         | 4"<br>(135)   | 6"<br>(145)         |   |  |
| Breakout force                       |  | lb<br>(kN)                           | 83,460<br>(371)     | 83,460<br>(371)   | 83,460<br>(371)     |   |  |
| Bucket tilt-back angle               | at ground level                                  | degree                               | 43°                 | 43°   | 43°                 |   |  |
|                                      | <b>E</b> at carry position                       | degree                               | 50°                 | 50°   | 50°                 |   |  |
| Overall                              | <b>F</b> Length                                  | ft-in<br>(mm)                        | 37'4"<br>(11,370)   | 36'3"<br>(11,040)   | 37'9"<br>(11,510)   |   |  |
|                                      | <b>G</b> Height (up to cab top)                  | ft-in<br>(mm)                        | 13'9"<br>(4,195)    | 13'9"<br>(4,195)  | 13'9"<br>(4,195)    |   |  |
|                                      | <b>H</b> Height (bucket fully raised)            | ft-in<br>(mm)                        | 29'8"<br>(7,040)    | 22'9"<br>(6,940)  | 24'3"<br>(7,385)    |   |  |
|                                      | <b>I</b> Width (outside tire)                    | ft-in<br>(mm)                        | 11'9"<br>(3,570)    | 11'9"<br>(3,570)  | 11'9"<br>(3,570)    |   |  |
|                                      | <b>J</b> Width (outside bucket)                  | ft-in<br>(mm)                        | 12'4"<br>(3,770)    | 12'4"<br>(3,770)  | 12'4"<br>(3,770)    |   |  |
| <b>K</b>                             | Tread  | ft-in<br>(mm)                        | 8'8"<br>(2,650)     | 8'8"<br>(2,650)   | 8'8"<br>(2,650)     |   |  |
| <b>L</b>                             | Wheel base                                       | ft-in<br>(mm)                        | 13'7"<br>(4,150)    | 13'7"<br>(4,150)  | 13'7"<br>(4,150)    |   |  |
|                                      | Clearance Circle (bucket carry position)         | <b>M</b> at outside of bucket        | ft-in<br>(mm)       | 24'9"<br>(7,545)  | 24'9"<br>(7,545)    | 24'9"<br>(7,545)  |  |
| at outside of tire                   |  | ft-in<br>(mm)                        | 29'<br>(8,835)      | 29'1"<br>(8,870)  | 29'9"<br>(9,055)    |   |  |
| <b>N</b>                             | Minimum ground clearance                         | ft-in<br>(mm)                        | 1'10"<br>(545)      | 1'10"<br>(545)  | 1'10"<br>(545)      |   |  |
| <b>O</b>                             | Full articulation angle                          | degree                               | 37°                 | 37°   | 37°                 |   |  |
| Operating weight (with ROPS cab)*    |  | lb<br>(kg)                           | 104,880<br>(47,573) | 102,445<br>(46,468)   | 102,944<br>(46,695) |   |  |
| Static tipping load (with ROPS cab)+ | Straight   | lb<br>(kg)                           | 71,310<br>(32,340)  | 73,200<br>(33,200)  | 62,420<br>(28,310)  |   |  |
|                                      | Full turn  | lb<br>(kg)                           | 60,370<br>(27,380)  | 61,980<br>(28,110)  | 52,850<br>(23,970)  |   |  |

Note: All dimensions, weight and performance data based on ISO 6746-1:1987, ISO 7137:2009 and ISO 7546:1983

\*: Static tipping load and operating weight marked with\* include 35/65 R33 (L5) tires (No ballast) with lubricants, full fuel tank and operator.

Machine stability and operating weight depend on counterweight, tire size and other attachments.

## DIMENSIONS



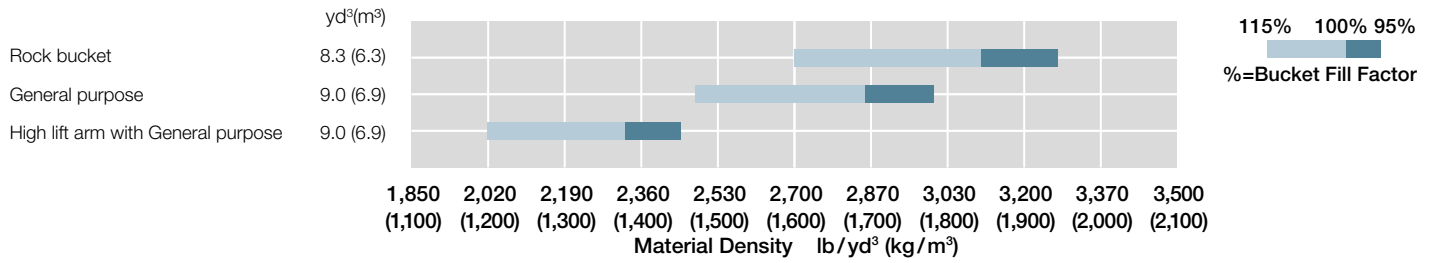
Equipped with 35/65 R33 (L5) tire and ROPS cab.

# SPECIFICATIONS

## WEIGHTS AND DIMENSIONS

| Option item         | Operating weight<br>lb (kg) | Tipping load lb (kg) |                 | Overall width<br>in (mm)<br>(outside tire) | Overall height<br>in (mm) | Overall length<br>in (mm) |
|---------------------|-----------------------------|----------------------|-----------------|--|---------------------------|---------------------------|
|                     |                             | Straight             | Full turn       |  |                           |                           |
| Remove ROPS and Cab | -3,110 (-1,410)             | -2,870 (-1,300)      | -2,381 (-1,080) | ±0   | -1,380 (-625)             | ±0                        |

## BUCKET SELECTION CHART



# EQUIPMENT DATA

## STANDARD EQUIPMENT

### ENGINE

|                                      |
|--------------------------------------|
| Air cleaner, double element          |
| Auto idle shut down                  |
| Cold start (glow plug)               |
| Cooling fan, automatic reversible    |
| EGR (exhaust gas recirculation)      |
| Fuel filter, w/water separator       |
| Fuel pre-filter, w/water separator   |
| Isuzu 6WG1 diesel engine             |
| Pre-cleaner (Power Ram)              |
| SCR (selective catalytic reduction)  |
| VGT (variable geometry turbocharger) |
| Work mode selector                   |

### POWERTRAIN

|  |
|--|
| Autobrake  |
| Brakes, service  |
| Enclosed wet disc  |
| Dual system  |
| Outboard mounted   |
| Brake, parking   |
| Spring applied   |
| Oil pressure released                                    |
| Wet disc type  |
| Counterweight with towing pin                            |
| CRN certified accumulators                               |
| Differential, conventional type (F/R)                    |
| Down-shift switch  |
| Drive shafts, low maintenance                            |
| F-R direction selector (joystick steer mounted)          |
| Lock-up torque converter                                 |
| Propeller shafts, low maintenance                        |
| Quick Power switch                                       |
| Traction control   |
| Transmission, automatic w/load sensing system            |
| Transmission declutch (3-position L/H/Off)               |
| Transmission mode selection (3-position AUTO1/MAN/AUTO2) |

### HYDRAULIC SYSTEM

|  |
|--|
| Boom kick-out, dual (operator adjustable in cab)         |
| Bucket positioner (horizontal)                           |
| Control lever, dual, pilot-assisted                      |
| Control lever lock (electric)                            |
| Control valve, 2-function, parallel and tandem control   |
| CRN certified accumulator                                |
| Pump, variable displacement, load-sensing                |
| Ride control w/load sensing valve and automatic shut-off |
| Secondary steering                                       |
| Steering, pilot, joystick                                |
| System; open-center, high-pressure, load-sensing         |

### ELECTRICAL

|                                |
|--------------------------------|
| 24-volt electrical system      |
| Back-up alarm                  |
| Batteries (2), 12V, 1,300 CCA  |
| Battery disconnect switch      |
| Camera, rear-view              |
| Converter                      |
| Horn, dual electric            |
| Instrument panel, LCD, color   |
| Lights:                        |
| 2 Headlights (Halogen)         |
| 4 Forward working lights (LED) |
| 4 Rear working lights (LED)    |

|                                     |
|-------------------------------------|
| 2 Stop/tail/backup (LED)            |
| Turn signal w/4-way flashers/marker |

### CAB

|   |
|---|
| Soft cab: enclosed cab with sound suppression, front & rear wipers and washers, two rear view and side mirrors, tinted glass, front hinge doors, sliding side windows. Outer ROPS |
| Accessory outlet, 12v   |
| Adjustable armrest/console  |
| Air conditioner/heater/pressurizer  |
| AM/FM/WB radio with AUX input and Bluetooth®  |
| Ashtray   |
| Cab dome lamps (2)  |
| Cigarette lighter, 24V  |
| Coat hook   |
| Cup holder (1) for joystick steering  |
| Floormat, sweep-out   |
| Heated rear view mirrors  |
| Retractable seat belt (3-inch)  |
| ROPS/FOPS, ISO 3449 Level II compliant  |
| Seat, deluxe heated w/TLV suspension  |
| Front console with grab handle  |
| Joystick steering   |
| Storage box (heated/cooled)   |
| Storage tray  |
| Sun visor   |

### OTHERS

|   |
|---|
| Articulation locking bar                      |
| Belly guard, rear chassis                     |
| Counterweight                                 |
| Fenders, front, w/mudflap                     |
| Fenders, rear, full, w/mudflap                |
| Global e-service, telematic monitoring system |
| Ladders, inclined                             |
| Lifting lugs/ tie downs                       |
| Neutral safety start                          |
| Rear grill, hinged                            |
| Steps, rear                                   |
| Vandalism protection                          |
| Z-bar loader linkage                          |

### ALARMS, GAUGES, INDICATORS

|                           |                                      |
|---------------------------|--------------------------------------|
| Alarms (visual & audible) | Aftertreatment device                |
|                           | Air cleaner element                  |
|                           | Auto brake                           |
|                           | Axle oil temperature                 |
|                           | Battery discharge warning            |
|                           | Boost temperature rise               |
|                           | Brake oil low pressure               |
|                           | CAN network system                   |
|                           | DEF/AdBlue tank level/quality/system |
|                           | Engine coolant temp                  |
|                           | Engine oil low pressure              |
|                           | Engine trouble                       |
|                           | Engine warning                       |
|                           | Exhaust gas temperature              |
|                           | Fuel filter restriction              |
|                           | Fuel filter (water in fuel)          |
|                           | Fuel temperature                     |
|                           | Hydraulic oil level                  |
|                           | Hydraulic oil temperature            |
|                           | Intake air temperature               |
|                           | Main pump oil pressure               |
|                           | Transmission filter restriction      |
|                           | Transmission oil pressure            |
|                           | Transmission oil temp                |
|                           | Transmission warning                 |

### ALARMS, GAUGES, INDICATORS (con't.)

|            |                                     |
|------------|-------------------------------------|
| Gauges     | DEF/AdBlue tank level               |
|            | Engine coolant temperature          |
|            | Fuel gauge                          |
|            | Speedometer                         |
|            | Tachometer                          |
|            | Transmission oil temp               |
| Indicators | Auto idling stop                    |
|            | Aftertreatment device               |
|            | Air conditioner display             |
|            | Boom kick-out, dual                 |
|            | Cold start                          |
|            | Control lever lock                  |
|            | Declutch                            |
|            | ECO-Operating Status                |
|            | Fan reverse rotation                |
|            | F-N-R Selection                     |
|            | F-N-R Switch enable                 |
|            | High beam                           |
|            | Joystick steering status            |
|            | Parking brake                       |
|            | Shift hold                          |
|            | Time/Operating hour/ODO             |
|            | Traction Control                    |
|            | Transmission mode and status        |
|            | Turn signal w/4-way flashers/Marker |
|            | Work light                          |
|            | Work mode (Normal, Power)           |

### OPTIONAL EQUIPMENT

|   |
|---|
| 3rd function hydraulics multi-lever                 |
| Bolt-on cutting edge & segments                     |
| Bucket teeth with teeth and segments                |
| Cab prefilter (Respa)                               |
| Cab window guards                                   |
| Head light  |
| Heavy counterweight – Logging                       |
| High lift arm                                       |
| High-mount sub-monitor                              |
| Hydraulic tank sight gauge guard                    |
| Rear light guard                                    |
| Satellite GPS telematics                            |
| Single lever hydraulic control w/multifunction grip |

Standard and optional equipment may vary by country, so please consult your Hitachi Construction Machinery Americas authorized local dealer for details.



# HITACHI

Reliable solutions



REPUTATIONS ARE  
**BUILT ON IT.**

Hitachi Construction Machinery Americas Inc. is a leading provider of construction and mining machinery services and solutions in North and Latin America. Our manufacturing facilities are located in Banshu, Ryugasaki, Tierra, Hitachinaka, and Tsuchiura, Japan, while our U.S. corporate office is in Newnan, Georgia. Our experienced team of professionals is well-equipped to design, engineer, manufacture, and service your machinery.

Through our long-term commitment to maintaining a leadership position in technology, service, and support, we support an extensive network of independent, local dealers focused on providing you with knowledgeable and experienced sales, service, and parts personnel — all backed by our dedicated support teams.

Your Hitachi Construction Machinery Americas authorized local dealer has the resources, expertise, and personnel to work with you to ensure that you receive the most benefit from your investment. You can also utilize carefully designed programs and services in conjunction with extensive digital resources. Our focus is entirely on supporting you, your business, and your machinery.

If you are searching for a reliable partner for your construction machinery needs, we invite you to explore our offerings and experience the difference with Hitachi Construction Machinery Americas.

Machines representative of global product. Options may not be available in all markets. Prior to operating this machine, including satellite communication system, in a country other than a country of its intended use, it may be necessary to make modifications to it so that it complies with the local regulatory standards (including safety standards) and legal requirements of that particular country. Please do not export or operate this machine outside the country of its intended use until such compliance has been confirmed. Please contact your Hitachi Construction Machinery Americas authorized local dealer in case of questions about compliance. These specifications are subject to change without notice. Illustrations and photos show the standard models, and may or may not include optional equipment, accessories, and all standard equipment with some differences in color and features. Before use, read and understand the Operator's Manual for proper operation.